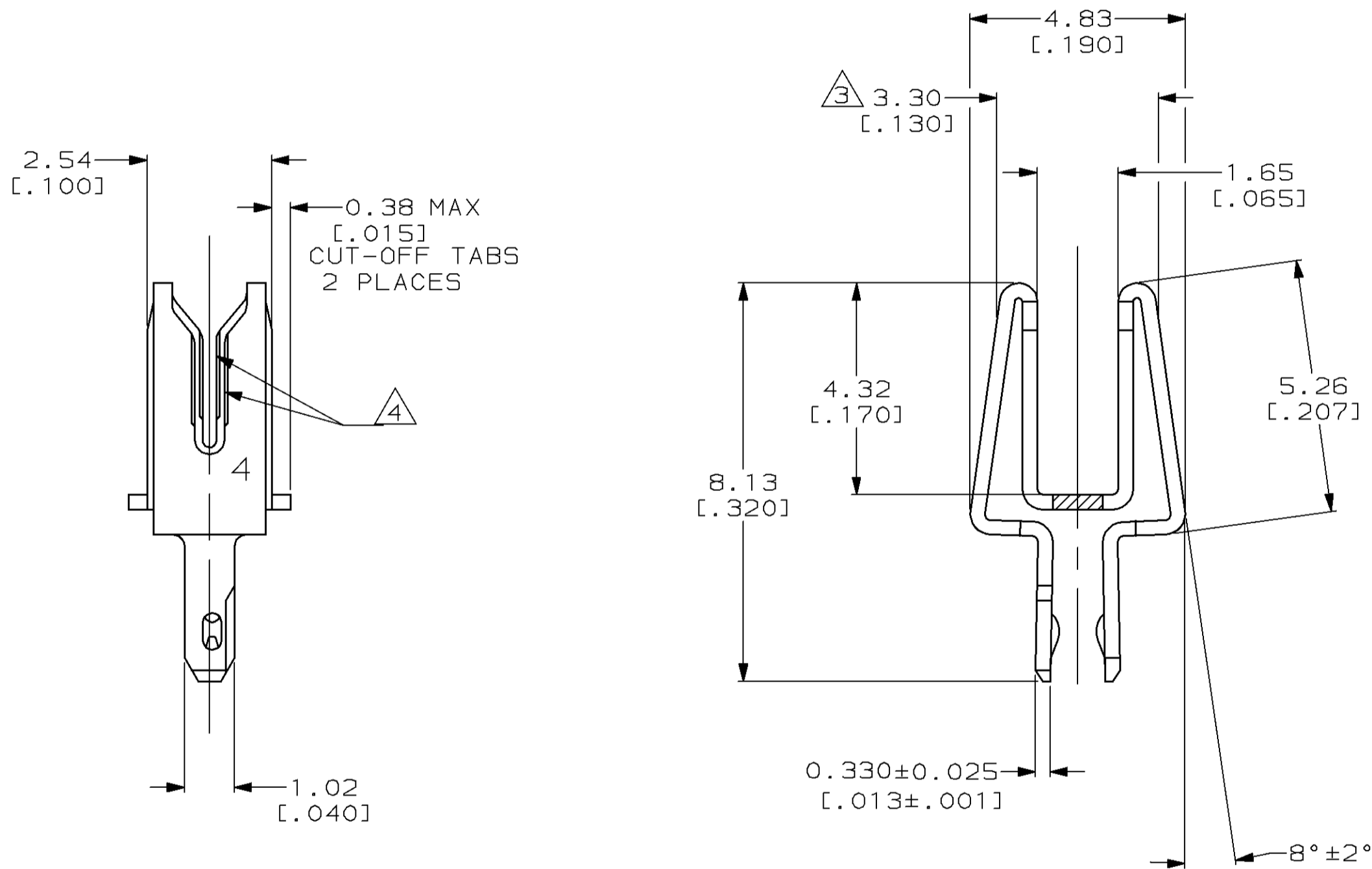


LOC	DIST	P	F	ZONE	LTR	DESCRIPTION	DATE	APPD
AF	50				L	REV PER 0G1A-0418-98	11/25/98	JR/DD



- 1 WIRE TYPES NOT DESCRIBED SHALL BE SUBMITTED TO AMP ENGINEERING FOR WIRE-TO-TERMINAL APPLICATION APPROVAL
- 2 APPLICATION OF TERMINAL INTO P.C.BOARD AND WIRE INSERTION INTO TERMINAL SHALL BE IN ACCORDANCE WITH AMP SPEC.114-2051
- 3 MAXIMUM WIDTH AFTER INSERTION IN P.C. BOARD
- 4 SLOT ACCEPTS 0.20mm² [#24] AWG 7 STRANDED (TIN PLATED) COPPER WIRE, 0.50-0.40mm [#24-#26] AWG SOLID COPPER WIRE, 0.40mm [#26] AWG FUSED COPPER WIRE.
- 5 0.00381 [.000150] MIN TIN PER MIL-T-10727 OVER 0.00254 [.000100] MIN COPPER UNDERPLATE PER MIL-T-14550.
 OR
 0.00381 [.000150] MIN TIN PER MIL-T-10727 OVER 0.00127 [.000050] MIN NICKEL UNDERPLATE PER QQ-N-290

1.52 [.060] MAX	62977-1
INSULATION DIA. (PVC)	PART NO

DO NOT SCALE PRINT. UNLESS SPECIFIED DIMENSIONS IN mm [INCHES] TOLERANCES ON : 2 PLC DEC ± 0.25 [.010] 3 PLC DEC ± - ANGLES ± 1°	DR 13/SEPT/95 R.GRZYBOWSKI	AMP Incorporated Harrisburg, PA 17105-3608
	CHK 13/SEPT/95 M.S.FEHER	
MATERIAL H04 BRASS	APPD 13/SEPT/95 T.L.SHUTTER	NAME TERMINAL, QUADRA-MATE 100 SERIES, LOOSE PIECE
FINISH	PRODUCT SPEC 108-2032	SIZE C 00779
THIS DRAWING IS A CONTROLLED DOCUMENT FOR AMP INCORPORATED. IT IS SUBJECT TO CHANGE AND THE CONTROLLING ENGINEERING ORGANIZATION SHOULD BE CONTACTED FOR THE LATEST REVISION.	APPLICATION SPEC 2	DRAWING NO C-62977
	WEIGHT -	SCALE 10:1
		SHEET 1 OF 1