

Reversing load relay - PLC-SC-ELR W1/ 2-24DC - 2980539

Please be informed that the data shown in this PDF Document is generated from our Online Catalog. Please find the complete data in the user's documentation. Our General Terms of Use for Downloads are valid (<http://phoenixcontact.com/download>)



PLC-INTERFACE as an electronic reversing load relay, consisting of PLC-BSC.../21 basic terminal block with screw connection and integrated circuit, for driving DC motors, with LED and protective circuit, output: 10 ... 30 V DC/2 A

Your advantages

- Wear-free reversing
- Short-circuit, surge, and overload-proof output
- Screw or spring-cage connection
- Braking by controlling both inputs
- Integrated locking circuit and load wiring



Key Commercial Data

| | |
|--------------|---------------|
| Packing unit | 1 pc |
| GTIN | |
| GTIN | 4046356051309 |

Technical data

Note

| | |
|-------------------------|---------------------------------------------------------------------------|
| Utilization restriction | EMC: class A product, see manufacturer's declaration in the download area |
|-------------------------|---------------------------------------------------------------------------|

Dimensions

| | |
|--------|--------|
| Width | 6.5 mm |
| Height | 80 mm |
| Depth | 86 mm |

Ambient conditions

| | |
|-----------------------------------------|------------------|
| Ambient temperature (operation) | -25 °C ... 60 °C |
| Ambient temperature (storage/transport) | -40 °C ... 85 °C |
| Degree of protection | IP20 |

Reversing load relay - PLC-SC-ELR W1/ 2-24DC - 2980539

Technical data

Input data

| | |
|--------------------------------------------|----------------------------------------------------------|
| Input name | Device supply |
| Nominal input voltage U_N | 24 V DC $\pm 20\%$ (Control voltage U_{ST} right/left) |
| Input voltage range | 19.2 V DC ... 28.8 V DC |
| Typical input current at U_N | approx. 3 mA (Control input current I_{ST} right/left) |
| Rated control circuit supply voltage U_S | 24 V DC |
| Control supply voltage range | 19.2 V DC ... 28.8 V DC |
| Transmission frequency | 300 Hz |
| Protective circuit | Reverse polarity protection Polarity protection diode |
| | Surge protection |
| Surge voltage protection | > 33 V DC |
| Typical response time | 200 μ s |
| Status display | Yellow LED |
| Switchover time R_L/L_L (turn-on time) | 80 ms |
| Input name | Control input right/left |
| Nominal input voltage U_N | 24 V DC |
| Input voltage range in reference to U_N | 0.8 ... 1.2 |
| Input voltage range | 19.2 V DC ... 28.8 V DC |

Output data load output

| | |
|------------------------------|-----------------------------------------------------------------|
| Output name | DC output |
| Note | Protect the supply voltage at the output using a suitable fuse. |
| Nominal output voltage | 24 V DC |
| Operating voltage range | 10 V DC ... 30 V DC |
| Nominal output voltage range | 10 V DC ... 30 V DC |
| Type of protection | Reverse polarity protection |
| Protective circuit/component | Polarity protection diode |
| Note on protection circuit | No continuous protection against polarity reversal |
| Type of protection | Surge protection |

General

| | |
|-----------------------|--------------------------------|
| Mounting position | Vertical (horizontal DIN rail) |
| Assembly instructions | in rows with zero spacing |
| Operating mode | 100% operating factor |

Connection data

| | |
|----------------------------------|----------------------------------------------|
| Connection name | Control circuits |
| Connection method | Screw connection |
| Stripping length | 8 mm |
| Screw thread | M3 |
| Conductor cross section solid | 0.14 mm ² ... 2.5 mm ² |
| Conductor cross section flexible | 0.14 mm ² ... 2.5 mm ² |
| Conductor cross section AWG | 26 ... 14 |

Reversing load relay - PLC-SC-ELR W1/ 2-24DC - 2980539

Technical data

Connection data 2

| | |
|----------------------------------|----------------------------------------------|
| Connection name | Load circuit |
| Connection method | Screw connection |
| Stripping length | 8 mm |
| Screw thread | M3 |
| Conductor cross section solid | 0.14 mm ² ... 2.5 mm ² |
| Conductor cross section flexible | 0.14 mm ² ... 2.5 mm ² |
| Conductor cross section AWG | 26 ... 14 |

Standards and Regulations

| | |
|--------------------------|------------------------------------------------------------------|
| Designation | Air clearances and creepage distances between the power circuits |
| Standards/regulations | IEC 60664 |
| | EN 50178 |
| Rated insulation voltage | 50 V |
| Rated surge voltage | 0.5 kV |
| Insulation | Basic insulation |
| Pollution degree | 2 |
| Overvoltage category | II |

Conformance/approvals

| | |
|----------------|----------------------------|
| Designation | CE |
| Certificate | CE-compliant |
| Designation | Corrosive gas test |
| Identification | ISA-S71.04. G3 Harsh Group |
| | EN 60068-2-60 |

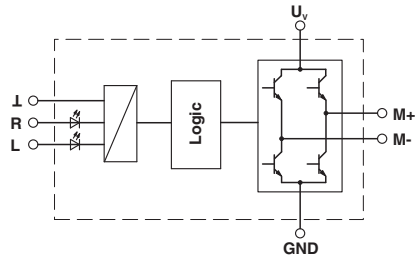
Environmental Product Compliance

| | |
|------------|-----------------------------------------------------------------------------------------------------|
| REACH SVHC | Lead 7439-92-1 |
| China RoHS | Environmentally Friendly Use Period = 50 years |
| | For details about hazardous substances go to tab "Downloads", Category "Manufacturer's declaration" |

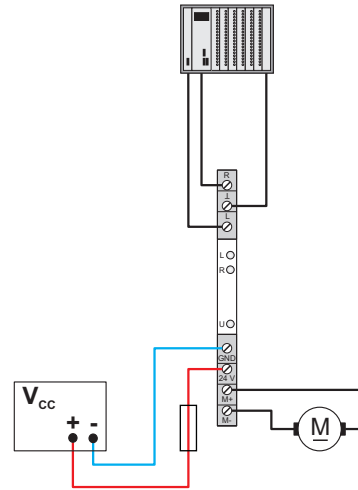
Drawings

Reversing load relay - PLC-SC-ELR W1/ 2-24DC - 2980539

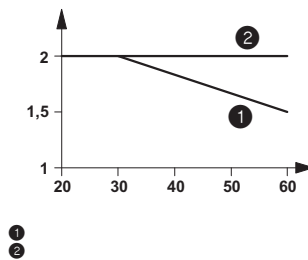
Circuit diagram



Application drawing



Diagram



Classifications

eCl@ss

| | |
|---------------|----------|
| eCl@ss 10.0.1 | 27371014 |
| eCl@ss 11.0 | 27371014 |
| eCl@ss 4.0 | 27371100 |
| eCl@ss 4.1 | 27371100 |
| eCl@ss 5.0 | 27371000 |
| eCl@ss 5.1 | 27371000 |
| eCl@ss 6.0 | 27371000 |
| eCl@ss 7.0 | 27371014 |
| eCl@ss 9.0 | 27371014 |

ETIM

| | |
|----------|----------|
| ETIM 4.0 | EC002055 |
| ETIM 6.0 | EC002055 |
| ETIM 7.0 | EC002055 |

Reversing load relay - PLC-SC-ELR W1/ 2-24DC - 2980539

Classifications

UNSPSC

| | |
|---------------|----------|
| UNSPSC 6.01 | 30211916 |
| UNSPSC 7.0901 | 39121542 |
| UNSPSC 11 | 39121542 |
| UNSPSC 12.01 | 39121542 |
| UNSPSC 13.2 | 39121542 |
| UNSPSC 18.0 | 39122333 |
| UNSPSC 19.0 | 39122333 |
| UNSPSC 20.0 | 39122333 |
| UNSPSC 21.0 | 39122333 |

Approvals

Approvals

Approvals

EAC

Ex Approvals

Approval details

| | | |
|-----|--|-----------------|
| EAC | | TR_TS_D_00573_c |
|-----|--|-----------------|

Accessories

Accessories

Bridge

Continuous plug-in bridge - FBST 500-PLC RD - 2966786



Continuous plug-in bridge, length: 500 mm, color: red

Reversing load relay - PLC-SC-ELR W1/ 2-24DC - 2980539

Accessories

Continuous plug-in bridge - FBST 500-PLC BU - 2966692



Continuous plug-in bridge, length: 500 mm, color: blue

Continuous plug-in bridge - FBST 500-PLC GY - 2966838



Continuous plug-in bridge, length: 500 mm, color: gray

Single plug-in bridge - FBST 6-PLC RD - 2966236



Single plug-in bridge, length: 6 mm, number of positions: 2, color: red

Single plug-in bridge - FBST 6-PLC BU - 2966812



Single plug-in bridge, length: 6 mm, number of positions: 2, color: blue

Single plug-in bridge - FBST 6-PLC GY - 2966825



Single plug-in bridge, length: 6 mm, number of positions: 2, color: gray

Reversing load relay - PLC-SC-ELR W1/ 2-24DC - 2980539

Accessories

Single plug-in bridge - FBST 8-PLC GY - 2967688



Single plug-in bridge, length: 8 mm, number of positions: 2, color: gray

DIN rail

DIN rail, unperforated - NS 35/ 7,5 V2A UNPERF 2000MM - 0801377



DIN rail, unperforated, Standard profile, width: 35 mm, height: 7.5 mm, acc. to EN 60715, material: Stainless steel V2A, uncoated, length: 2000 mm, color: silver

DIN rail perforated - NS 35/ 7,5 PERF 2000MM - 0801733



DIN rail perforated, Standard profile, width: 35 mm, height: 7.5 mm, acc. to EN 60715, material: Steel, galvanized, passivated with a thick layer, length: 2000 mm, color: silver

DIN rail, unperforated - NS 35/ 7,5 CU UNPERF 2000MM - 0801762



DIN rail, unperforated, Standard profile, width: 35 mm, height: 7.5 mm, acc. to EN 60715, material: Copper, uncoated, length: 2000 mm, color: copper-colored

DIN rail, unperforated - NS 35/15 UNPERF 2000MM - 1201714



DIN rail, unperforated, Standard profile, width: 35 mm, height: 15 mm, similar to EN 60715, material: Steel, galvanized, passivated with a thick layer, length: 2000 mm, color: silver

Reversing load relay - PLC-SC-ELR W1/ 2-24DC - 2980539

Accessories

DIN rail, unperforated - NS 35/15 CU UNPERF 2000MM - 1201895



DIN rail, unperforated, Standard profile, width: 35 mm, height: 15 mm, similar to EN 60715, material: Copper, uncoated, length: 2000 mm, color: copper-colored

DIN rail, unperforated - NS 35/15-2,3 UNPERF 2000MM - 1201798



DIN rail, unperforated, Standard profile 2.3 mm, width: 35 mm, height: 15 mm, acc. to EN 60715, material: Steel, galvanized, passivated with a thick layer, length: 2000 mm, color: silver

DIN rail, unperforated - NS 35/15 AL UNPERF 2000MM - 1201756



DIN rail, unperforated, Standard profile, width: 35 mm, height: 15 mm, similar to EN 60715, material: Aluminum, uncoated, length: 2000 mm, color: silver

DIN rail perforated - NS 35/15 PERF 2000MM - 1201730



DIN rail perforated, Standard profile, width: 35 mm, height: 15 mm, similar to EN 60715, material: Steel, galvanized, passivated with a thick layer, length: 2000 mm, color: silver

DIN rail, unperforated - NS 35/ 7,5 UNPERF 2000MM - 0801681



DIN rail, unperforated, Standard profile, width: 35 mm, height: 7.5 mm, acc. to EN 60715, material: Steel, galvanized, passivated with a thick layer, length: 2000 mm, color: silver

Partition plate

Reversing load relay - PLC-SC-ELR W1/ 2-24DC - 2980539

Accessories

Separating plate - PLC-ATP BK - 2966841



Separating plate, 2 mm thick, required at the start and end of a PLC terminal strip. Furthermore, it is used for: visual separation of groups, safe isolation of different voltages of neighboring PLC relays in acc. with DIN VDE 0106-101, isolation

Power module

Power terminal block - PLC-ESK GY - 2966508



Power terminal block, for the input of up to four potentials, for mounting on NS 35/7.5

Screwdriver tools

Screwdriver - SZF 1-0,6X3,5 - 1204517



Actuation tool, for ST terminal blocks, also suitable for use as a bladed screwdriver, size: 0.6 x 3.5 x 100 mm, 2-component grip, with non-slip grip

Phoenix Contact 2021 © - all rights reserved
<http://www.phoenixcontact.com>

PHOENIX CONTACT GmbH & Co. KG
Flachsmarktstr. 8
32825 Blomberg
Germany
Tel. +49 5235 300
Fax +49 5235 3 41200
<http://www.phoenixcontact.com>