

4

3

2

1

© - TE Connectivity. All Rights Reserved.

REVISIONS

P	LTR	DESCRIPTION	DATE	DWN	APVD
	C2	PRODUCT DISCONTINUE	25MAY2020	EZ	WH

OBSOLETE

THIS DRAWING IS A CONTROLLED DOCUMENT.		DWN U.CHUANG 06AUG2010	<b>STE</b> TE Connectivity Ltd.																			
DIMENSIONS: mm		CHK V.PENG 06AUG2010																				
TOLERANCES UNLESS OTHERWISE SPECIFIED:		APVD W.KODAMA 06AUG2010	NAME RECEPTACLE ASSY SLIMLINE SATA PLUS																			
<table border="0"> <tr> <td>6 PLC</td> <td>±</td> <td></td> </tr> <tr> <td>1 PLC</td> <td>±</td> <td>±0.25</td> </tr> <tr> <td>2 PLC</td> <td>±</td> <td>±3°</td> </tr> <tr> <td>3 PLC</td> <td>±</td> <td></td> </tr> <tr> <td>4 PLC</td> <td>±</td> <td></td> </tr> <tr> <td>ANGLES</td> <td>±</td> <td></td> </tr> </table>		6 PLC	±		1 PLC	±	±0.25	2 PLC	±	±3°	3 PLC	±		4 PLC	±		ANGLES	±		PRODUCT SPEC 108-99030	DRAWING NO A3 00779 C-2129116	
6 PLC	±																					
1 PLC	±	±0.25																				
2 PLC	±	±3°																				
3 PLC	±																					
4 PLC	±																					
ANGLES	±																					
MATERIAL	FINISH	APPLICATION SPEC	RESTRICTED TO																			
		WEIGHT	SCALE 4:1	SHEET 1 OF 5																		
CUSTOMER DRAWING			REV C2																			

4

3

2

1

© - TE Connectivity. All Rights Reserved.

REVISIONS

P	LTR	DESCRIPTION	DATE	DWN	APVD
-	-	SEE SHEET 1	-	-	-

OBSOLETE

THIS DRAWING IS A CONTROLLED DOCUMENT.		DWN	TE Connectivity Ltd.		
DIMENSIONS: mm	TOLERANCES UNLESS OTHERWISE SPECIFIED:	CHK	NAME RECEPTACLE ASSY SLIMLINE SATA PLUS		
	<del>0 PLC ±</del> <del>1 PLC ± ±0.25</del> <del>2 PLC ± ±3°</del> <del>3 PLC ±</del> <del>4 PLC ±</del> ANGLES ±-	APVD			
MATERIAL	FINISH	PRODUCT SPEC	SIZE	CAGE CODE	DRAWING NO
		APPLICATION SPEC	A3	00779	C-2129116
		WEIGHT	RESTRICTED TO		
		CUSTOMER DRAWING	SCALE	SHEET	REV
			4:1	2 OF 5	C2

4

3

2

1

© - TE Connectivity. All Rights Reserved.

REVISIONS

P	LTR	DESCRIPTION	DATE	DWN	APVD
-	-	SEE SHEET 1	-	-	-

OBSOLETE

#18	HPD_PLUG_DETECT		
#17	SMB_CLK		
#16	SMB_DATA		
#15	PERST#		
#14	WAKE#		
#13	CLKREQ#	P6	GND
#12	+5V	P5	GND
#11	GND	P4	MANUFACTURING_DIAGNOSTIC
#10	PERX-	P3	+5V
#9	PERX+	P2	+5V
#8	GND	P1	DEVICE_PRESENT
#7	GND	S7	GND
#6	PETX-	S6	B+
#5	PETX+	S5	B-
#4	GND	S4	GND
#3	REFCLK-	S3	A-
#2	REFCLK+	S2	A+
#1	GND	S1	GND
PIN	DESCRIPTION	PIN	DESCRIPTION

5.51g	5.37g	8.25	7.35	5.60	0.76µm	2-2129116-3
						2-2129116-2
4.68g	4.56g	6.90	6.00	4.25	0.76µm	2-2129116-1
						1-2129116-3
						1-2129116-2
						1-2129116-1
5.51g	5.37g	8.25	7.35	5.60	G/F	2129116-3
						2129116-2
4.68g	4.56g	6.90	6.00	4.25	G/F	2129116-1
9 NET WEIGHT	8 NET WEIGHT	T	L	H	CONTACT AU PLATING	PART NUMBER

THIS DRAWING IS A CONTROLLED DOCUMENT.

DIMENSIONS: mm

TOLERANCES UNLESS OTHERWISE SPECIFIED:

8 PLC ±  
1 PLC ± ±0.25  
2 PLC ± ±3  
3 PLC ± ±  
4 PLC ± ±  
ANGLES ±

MATERIAL FINISH

STE TE Connectivity Ltd.

NAME: RECEPTACLE ASSY SLIMLINE SATA PLUS

SIZE: A3 CAGE CODE: 00779 DRAWING NO: 2129116 RESTRICTED TO: -

SCALE: 5:1 SHEET: 3 OF 5 REV: C2

CUSTOMER DRAWING

4

3

2

1

© - TE Connectivity. All Rights Reserved.

REVISIONS

P	LTR	DESCRIPTION	DATE	DWN	APVD
-	-	SEE SHEET 1	-	-	-

OBSOLETE

THIS DRAWING IS A CONTROLLED DOCUMENT.		DWN -	<b>TE</b> TE Connectivity Ltd.	
DIMENSIONS: mm	TOLERANCES UNLESS OTHERWISE SPECIFIED:	CHK -	NAME RECEPTACLE ASSY SLIMLINE SATA PLUS	
	<del>8 PLC ±</del> <del>1 PLC ± ±0.05</del> <del>2 PLC ± ±1°</del> <del>3 PLC ±</del> <del>4 PLC ±</del> ANGLES ±-	APVD -		
MATERIAL	FINISH	PRODUCT SPEC -	SIZE A3	CAGE CODE 00779
		APPLICATION SPEC -	DRAWING NO C-2129116	RESTRICTED TO -
		WEIGHT -	SCALE 8:1 SHEET 4 OF 5 REV C2	
		CUSTOMER DRAWING		

4

3

2

1

© - TE Connectivity. All Rights Reserved.

REVISIONS

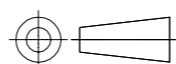
P	LTR	DESCRIPTION	DATE	DWN	APVD
-	-	SEE SHEET 1	-	-	-

O B S O L E T E

750	250	5.75	11.15	2-2129116-3
				2-2129116-2
900	300	4.4	9.8	2-2129116-1
750	250	5.75	11.15	2129116-3
				2129116-2
900	300	4.4	9.8	2129116-1
PCS/BOX	PCS/REEL	DIM R	DIM S	PART NUMBER

THIS DRAWING IS A CONTROLLED DOCUMENT.

DIMENSIONS:  
mm



TOLERANCES UNLESS OTHERWISE SPECIFIED:

- 8 PLC ±
- 1 PLC ± ±0.5
- 2 PLC ± ±3°
- 3 PLC ±
- 4 PLC ±
- ANGLES ±
- FINISH

MATERIAL

DWN	-
CHK	-
APVD	-
PRODUCT SPEC	-
APPLICATION SPEC	-
WEIGHT	-
CUSTOMER DRAWING	-



NAME				RECEPTACLE ASSY SLIMLINE SATA PLUS	
SIZE	CAGE CODE	DRAWING NO	RESTRICTED TO		
A3	00779	C-2129116	-		
SCALE		SHEET	REV		
FREE		5 of 5	C2		