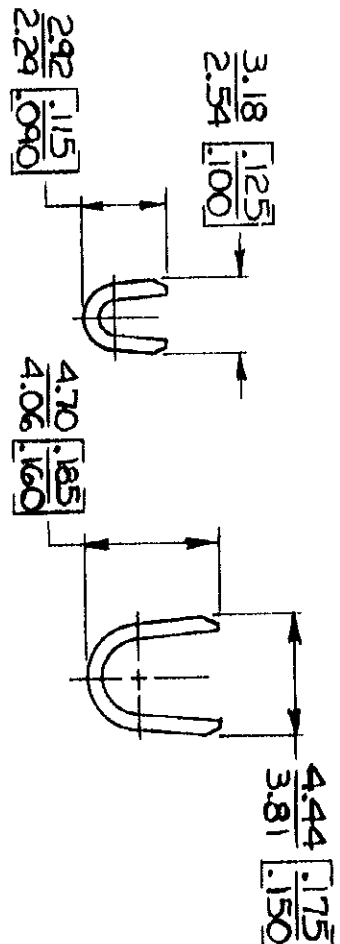
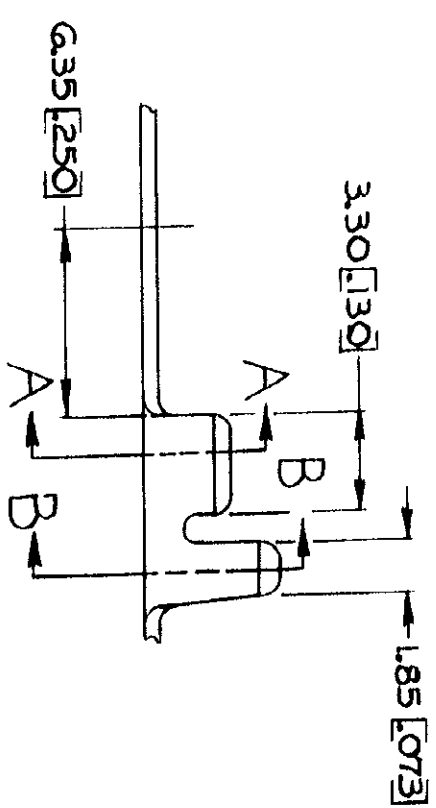
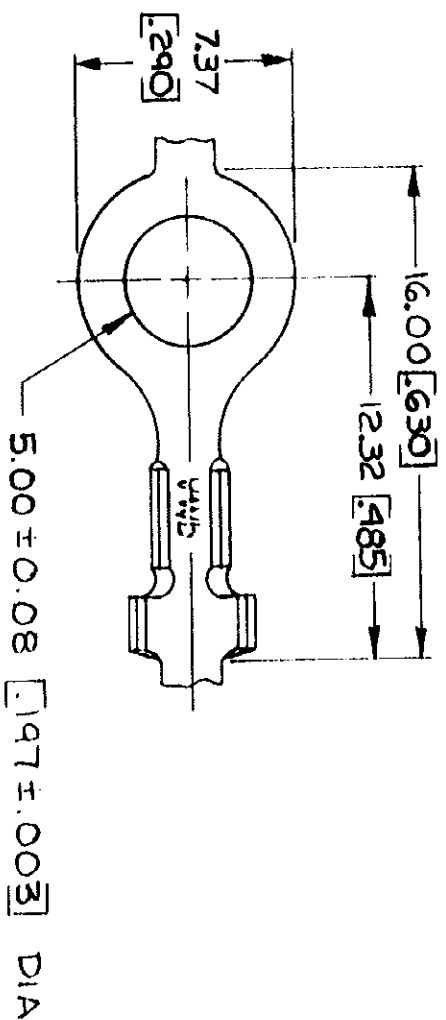


© COPYRIGHT 1964 BY AMP INCORPORATED, HARRISBURG, PA. ALL INTERNATIONAL RIGHTS RESERVED. AMP INCORPORATED PRODUCTS COVERED BY U. S. AND FOREIGN PATENTS AND/OR PATENTS PENDING.

REVISIONS			Loc	AF	DIST	
P	F	ZONE	LTR	DESCRIPTION	DATE	APPROVED
				REDRAWN & REVISED	4-3-64	[Signature]



SECT A-A SECT B-B

- CONTINUOUS STRIP ON REELS
- DIMENSIONS IN BRACKETS ARE IN INCHES.

UNLESS OTHERWISE SPECIFIED DIMENSIONS ARE IN MILLIMETERS TOLERANCES ON: DIMENSIONS ±.10 ANGLES ±1°	STUD SIZE	WIRE RANGE	INSULATION RANGE	FINISH	MATERIAL	PART NO
	#10	02-0.6mm [24-20]	203-2.54 [080-100]	TIN	0.5 BRASS [020]	41582
	MATERIAL	CONTRACT NO				
	SEE TABLE	SEE TABLE				

DR	06/27/78	NAME	AMP INCORPORATED
CHK	[Signature]		Harrisburg, Pa.
APPD	[Signature]	SIZE	B
APPD	[Signature]	CODE IDENT NO	00779
DESIGN APPD	[Signature]	DRAWING NO	41582
OTHER APPD		SCALE	SHEET

METRIC