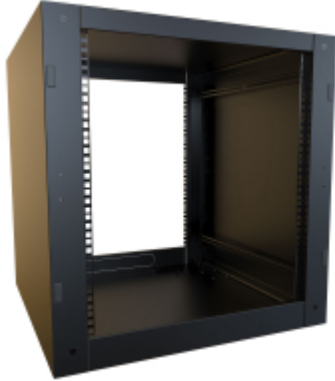




Quality Products. Service Excellence.

Knockdown Server Cabinet *RCSC Series*

1,500 lbs (680 kg) Weight Capacity



Ideal for your AV, IT/Server and Homelab applications, the RCSC Rack Cabinet features a stacking design that allows for up to three (3) cabinets* to be stacked atop each other. This Rack Cabinet is fully loaded and includes two (2) pairs of infinitely adjustable sliding EIA square-hole rails, punch-outs for cable entry and/or fan cooling and comes in a variety of sizes and depths.

The unique stacking feature enables your cabinet space to grow as your needs do. *Stack up-to three (3) 12U, two (2) 24U or one (1) of each cabinet atop each other using the required **RCSCBAY** baying kit. The 12U cabinet is a great starter cabinet for any small to medium sized business.

Features:

- Constructed in 16-gauge steel.
- Includes two (2) pairs of infinitely adjustable 19" EIA compliant square-hole mounting rails with rack unit markings.
 - Starter pack of **CAGKIT1032-25** screws and cage nuts included with 12U units.
 - Starter pack of **CAGKIT1032-50** screws and cage nuts included with 24U units.
- Four (4) embosses are included with support for optional levelling feet or casters.
- Grounding studs provided on body.
- The top and bottom of the RCSC includes two (2) laser knockouts (per side) for cable-entry or fans (includes gasket strip material).
- Includes a laser knockout rear gland plate for floor-level cable entry.
- Finished in rugged black powder paint.
- Ships unassembled in a flat pack container for easy handling and shipping protection.



Specifications:

- Mounting rails are infinitely adjustable in depth and are fabricated of heavy duty 14-gauge steel, painted smooth black.
- Optional doors are available in solid, tinted acrylic with venting (see above-left) and high airflow vented.
 - Snap-in hinges can be mounted without having to bolt-on from inside the cabinet. In addition, the hinges can be mounted on the left or right.
- High airflow perforated doors for both front and rear of the cabinet are suggested for most server applications.
 - Perforated doors meet server manufacturer Free-Air-Ratio (FAR) requirements at 63%.
- For 36" depth cabinet side panels include cable entry knockouts.
- Tested to nearly double the suggested load rating of 1,500 lbs (680 kg).
- TAA Compliant.
- RoHS Compliant.
- Manufactured in North America.

Gallery



Accessories

- Universal Rack Shelf
- Rack Mount Locking Storage Drawer
- Sliding Keyboard Shelf
- PDUs and Outlet Strips
- Adjustable Depth Cable Manager
- Horizontal Hinged Cable Manager
- Horizontal Steel Finger Cable Manager
- Cabinet Caster Set
- Leveling Feet
- Adjustable Depth Shelf
- Four Post Mounting Sliding Shelf
- Mounting Screw and Cage Nut Combo-Pack
- Rack Unit Label
- Horizontal Lacing Strip
- Horizontal Ring Cable Manager
- Rack Panels
- Grounding & Bonding
- Fan Kits

Part No.	Overall Dimensions			Rack Units	Usable Mounting Dimensions		
	Height	Width	Depth		Height	Width	Depth
RCSC1902124BK1	25.00	24.00	24.50	12U	21.00	19.00	23.00
RCSC1902131BK1	25.00	24.00	31.50	12U	21.00	19.00	30.00
RCSC1902136BK1	25.00	24.00	36.00	12U	21.00	19.00	34.42
RCSC1904224BK1	46.00	24.00	24.50	24U	42.00	19.00	23.00
RCSC1904231BK1	46.00	24.00	31.50	24U	42.00	19.00	30.00
RCSC1904236BK1	46.00	24.00	36.00	24U	42.00	19.00	34.42

Optional Doors

Part No.	Part No.	Part No.	Use with Cabinet Panel Height	
			Units	Rack Units
Solid Door	Vented Door	Vented Window Door		
RCSC19021SDBK1	RCSC19021VDBK1	RCSC19021WDBK1	21.00	12U
RCSC19042SDBK1	RCSC19042VDBK1	RCSC19042WDBK1	42.00	24U

RCSC Baying Kit

Part No.	RCSCBAY
----------	---------

Compatible Casters

Part No.	Strength	Style/ Material	Overall Height		Hole Mounting Pattern		Caster Set Weight Capacity	Qty Included In Set	Qty with Brakes Included
			Wheel Diameter	Added to Cabinet	Width	Depth			
1425BLSOFT	Light Duty	Soft Thermoplastic	2.95	3.50	1.75	3.00	660 lbs (299 kg)	4	4
1425BM	Medium Duty	Hard Composition	3.00	3.81	1.75	3.00	700 lbs (318 kg)	4	0
1425BH	Heavy Duty	Hard Composition	3.00	3.81	1.75	3.00	1,050 lbs (476 kg)	4	0
1425BHLOCK	Heavy Duty	Hard Composition	3.00	3.81	1.75	3.00	1,050 lbs (476 kg)	4	4

