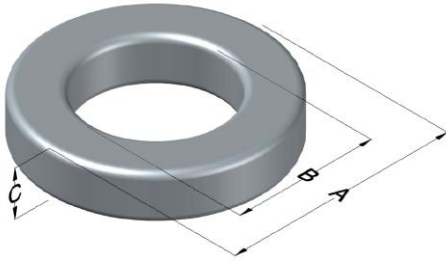




C055351A2

110 Delta Drive
 Pittsburgh, PA 15238
 NAFTA Sales: (1)800-245-3984
 HK Sales : (852)3102-9337
 magnetics@spang.com
 www.mag-inc.com



MPP Permeability (μ)	A_L (nH/T ²)	Core Marking			Coating Color
		Lot Number	Part Number	Inductance Grade	
60	51 ± 8%	XXXXXX	55351A2	X	Gray

Dimensions	Uncoated		Coated Limits			Packaging
	(mm)	(in)	(mm)	(in)		
OD (A)	23.57	0.928	24.33	0.958	max	Bulk Pack 4 bags/box Box Qty= 720 pcs
ID (B)	14.40	0.567	13.77	0.542	min	
HT (C)	8.89	0.350	9.65	0.380	max	

Electrical Characteristics			Physical Characteristics						
Watt Loss @ 100 kHz, 100mT max (mW/cm ³)	DC Bias min (oersteds)		Voltage Breakdown wire to wire min (V _{AC})	Break Strength min (kg)	Window Area W _A (mm ²)	Cross Section A _e (mm ²)	Path Length L _e (mm)	Volume V _e (mm ³)	Weight (g)
	700	80%							
	50.0	94.0							

Winding Information				Wound Coil Dimensions (mm)		Temperature Rating		
Winding Length Per Turn				40% Winding Factor		OD	26.7	Curie Temp: 460 °C
Winding Factor	(mm)	Winding Factor	(mm)	Completely Full Window		HT	14.2	
				Max OD	33.5	Notes:		
0%	29.8	40%	36.9	Surface Area (mm ²)				
20%	33.4	45%	38.0	Unwound Core		1,800		
25%	34.2	50%	38.9	40% Winding Factor		2,700		
30%	35.0	60%	41.1					
35%	36.1	70%	43.6					

