

Customer Information Sheet

DRAWING No.: S7101-42R

SHEET 2 OF 2

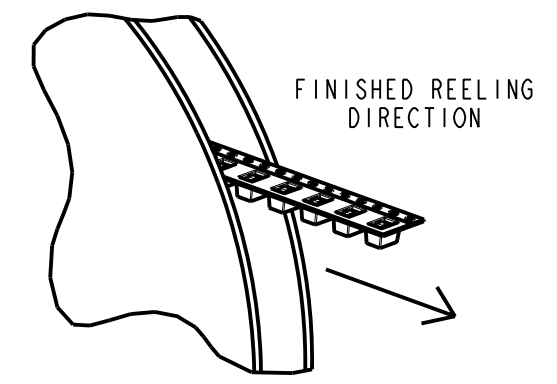
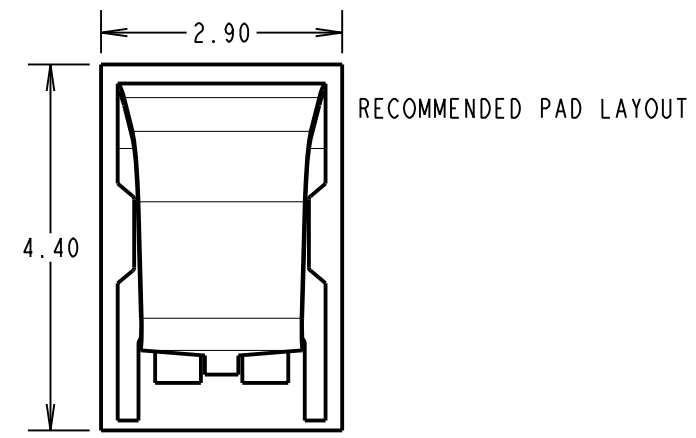
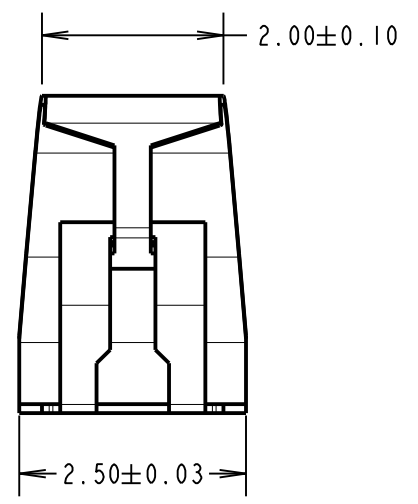
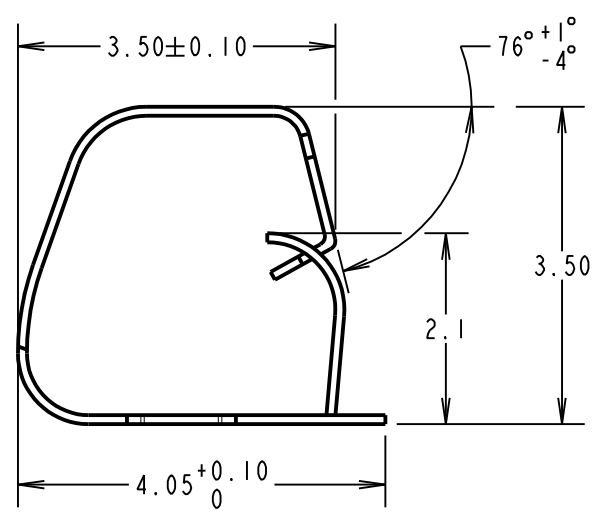
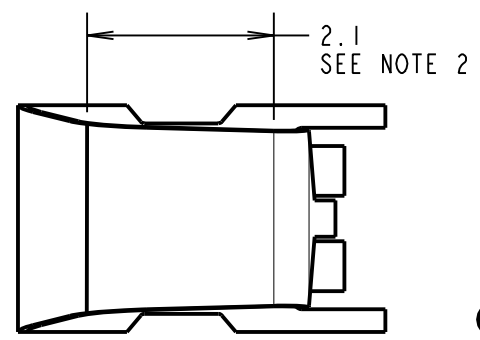
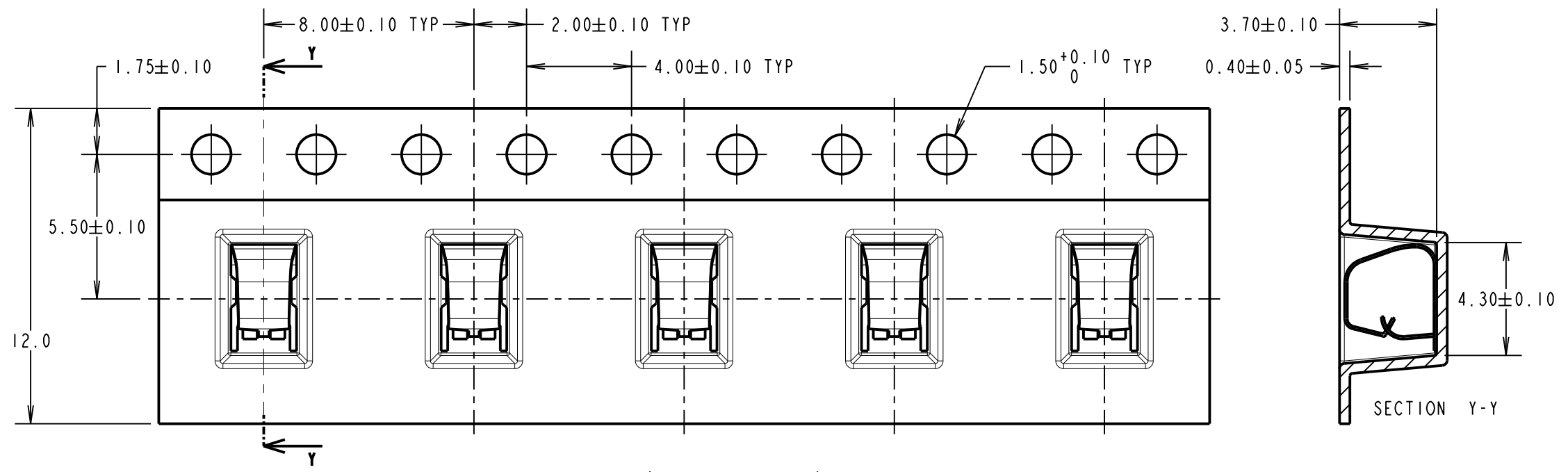
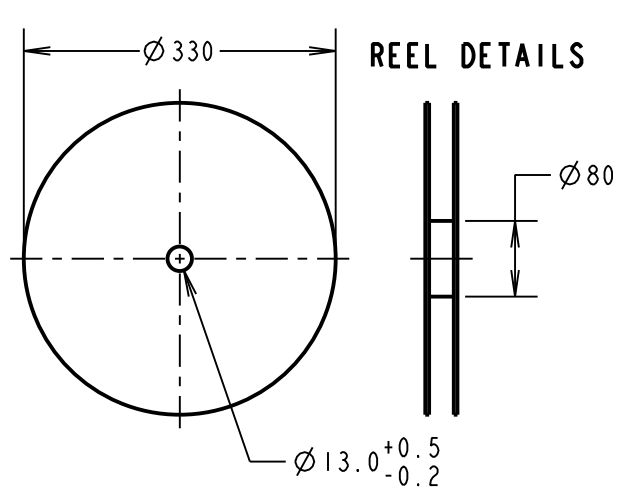
IF IN DOUBT - ASK

©

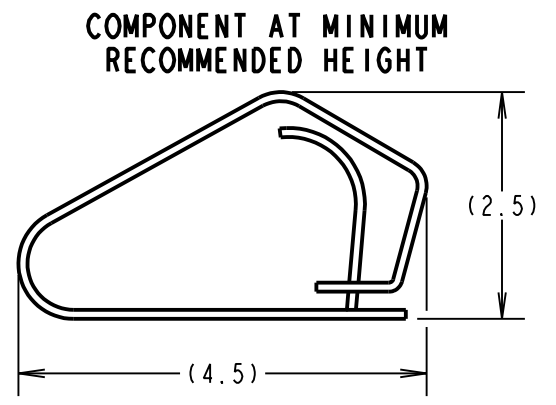
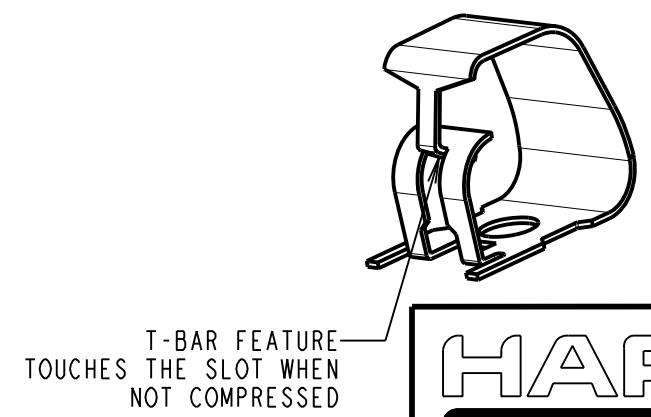
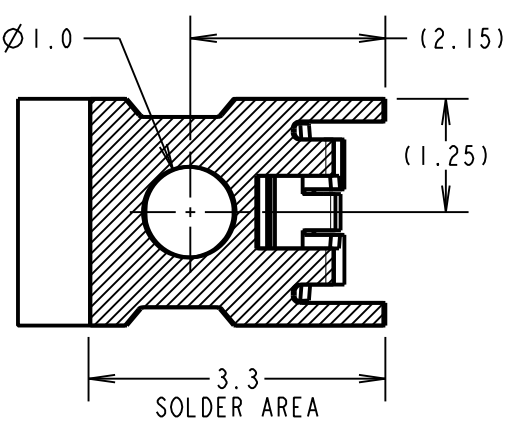
NOT TO SCALE

THIRD ANGLE PROJECTION

ALL DIMENSIONS IN mm



COMPONENT SPECIFICATION:
 MATERIAL = TITANIUM COPPER ALLOY,
 0.10mm THICK
 FINISH = 0.7 μ m-1.3 μ m NICKEL, GOLD FLASH
 ON CONTACT AND 2.54 μ m MIN 100%
 TIN ON FOOT AREA.
 RECOMMENDED WORKING HEIGHT = 3.00mm / MIN FORCE = 1.2N
 RECOMMENDED MINIMUM WORKING HEIGHT = 2.50mm
ELECTRICAL:
 CURRENT RATING = 3A
MECHANICAL:
 DURABILITY = 2000 CYCLES
ENVIRONMENTAL:
 OPERATING TEMPERATURE = -55°C TO +125°C



NOTES:
 1. QUANTITY PER REEL = 2500.
 2. GOLD PLATED AREA.
 3. ALL TOLERANCES ARE: X.X = ± 0.30 mm
 X.XX = ± 0.15 mm
 UNLESS OTHERWISE STATED.

FM	8	16.01.18	21032
NAME	ISS.	DATE	C/NOTE
APPROVED:		F. MCGOWAN	
CHECKED:		S. BENNETT	
DRAWN:		R. ADDE	
CUSTOMER REF.:			
ASSEMBLY DRG:			

<p>www.harwin.com technical@harwin.com</p>	<p>THIS DRAWING AND ANY INFORMATION OR DESCRIPTIVE MATTER SET OUT HEREON ARE CONFIDENTIAL AND COPYRIGHT PROPERTY OF THE HARWIN GROUP AND MUST NOT BE DISCLOSED, LOANED, COPIED OR USED FOR MANUFACTURING, TENDERING OR FOR ANY OTHER PURPOSE WITHOUT THEIR WRITTEN PERMISSION.</p>	<p>TOLERANCES X = ± 1mm X.X = ± 0.50mm X.XX = ± 0.10mm X.XXX = ± 0.01mm ANGLES = $\pm 5^{\circ}$ UNLESS STATED</p>	<p>MATERIAL: SEE ABOVE</p>	<p>TITLE: SMT SHIELD FINGER (3.5mm) IN TAPE AND REEL</p>
			<p>FINISH: SEE ABOVE</p>	<p>DRAWING NUMBER: S7101-42R</p>
			<p>S/AREA: mm²</p>	<p>SHT 2 OF 2</p>