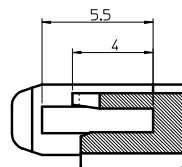
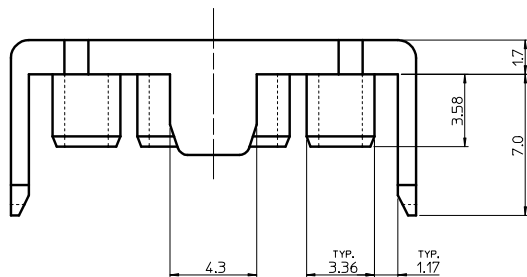
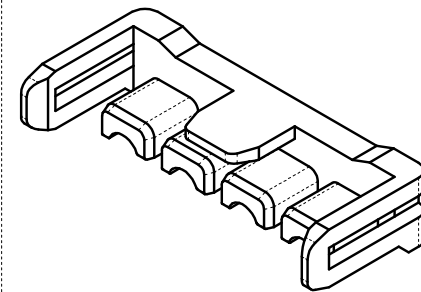
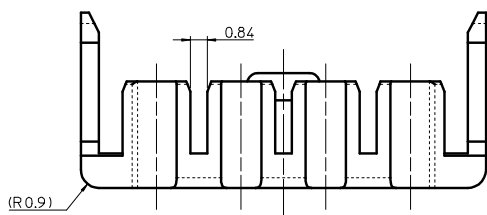
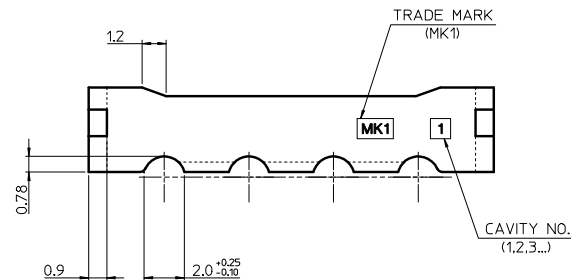
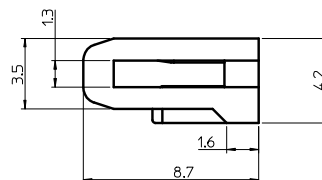
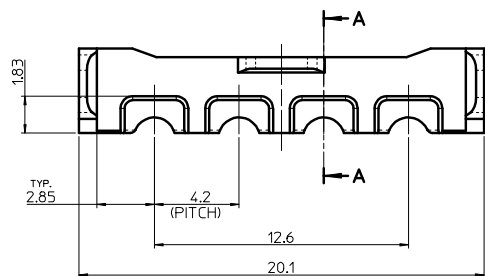


NOTES

1. MATERIAL : POLYAMIDE66(G/F:13%), BLUE COLOR
2. APPLICABLE TERMINAL : 5558 T2A SERIES
 APPLICABLE WIRE : #24~#26 (INS DIA. : 1.28~1.41mm)
3. MATED WITH HOUSING : 5559-08PL
4. PRODUCT SPECIFICATION : RPS-49623-001



Section A-A



RELEASED EC NO: KOR2016-0042 DRWN: SCHONG03 2015/11/06 CHKD: SHCHU 2015/11/06 APPR: YSK1M02 2016/10/31	DESCRIPTION A	QUALITY SYMBOLS	GENERAL TOLERANCES (UNLESS SPECIFIED)	DIMENSION STYLE	SCALE	DESIGN UNITS	THIRD ANGLE PROJECTION
		▼=0 ∇=0	mm INCH 4 PLACES ± --- ± --- 3 PLACES ± --- ± --- 2 PLACES ± 0.3 ± --- 1 PLACE ± 0.3 ± --- 0 PLACE ± --- ± ---	MM ONLY	4:1	METRIC	
		ANGULAR ± 1 ° DRAFT WHERE APPLICABLE MUST REMAIN WITHIN DIMENSIONS	DRAWN BY: SCHONG03 CHECKED BY: SHCHU APPROVED BY: YSK1M02 DATE: 2015/11/06 DATE: 2015/11/06 DATE: 2016/10/31	TITLE	NEW MINI.FIT CONNECTOR UPPER TPA FOR CRIMP PIN HOUSING		
			MATERIAL NO. 495450892	DOCUMENT NO. SD-49545-002	molex		