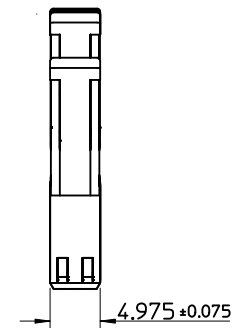
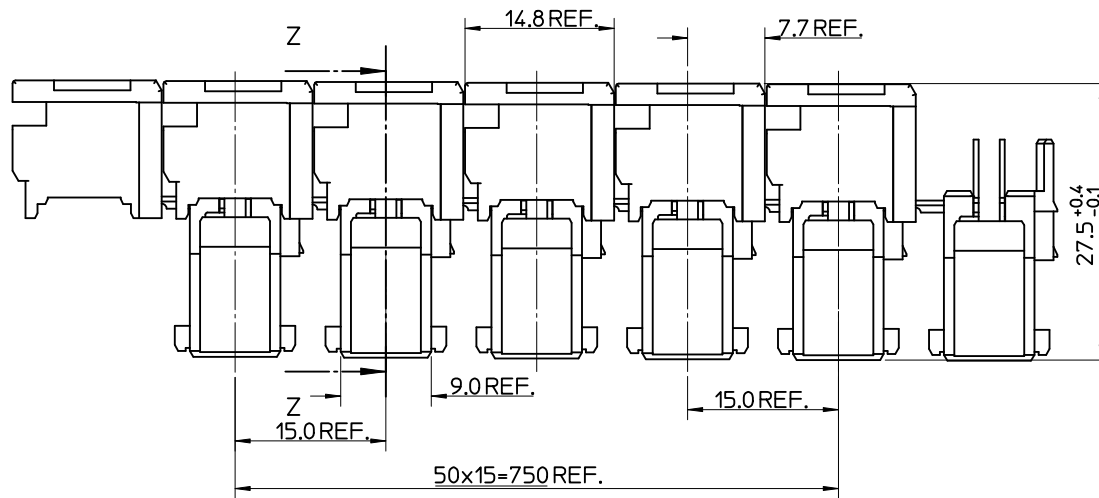
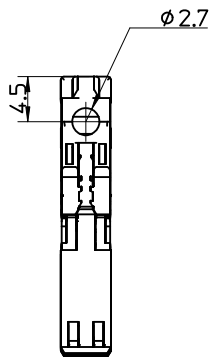
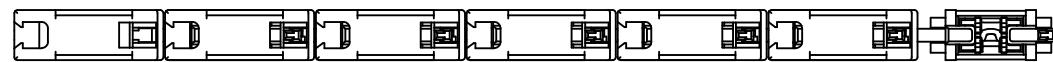
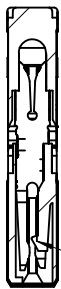


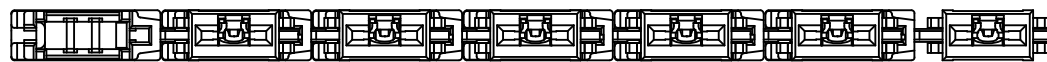
10 9 8 7 6 5 4 3 2 1



Z-Z



LOCKING TAB



NOTES:

1. MATERIALS:

HOUSING: PA66 UL94 V-0

TERMINAL: COPPER ALLOY, 0.5 REF THICK

PLATING: OPTION 1: 5um MIN PURE Sn ALL OVER

OPTION 2: 2um MIN SILVER IN CONTACT AREA

0.05um MIN SILVER FLASH ALLOWER

2. PRODUCT CONFORMS TO SPECIFICATION PS-99020-0037

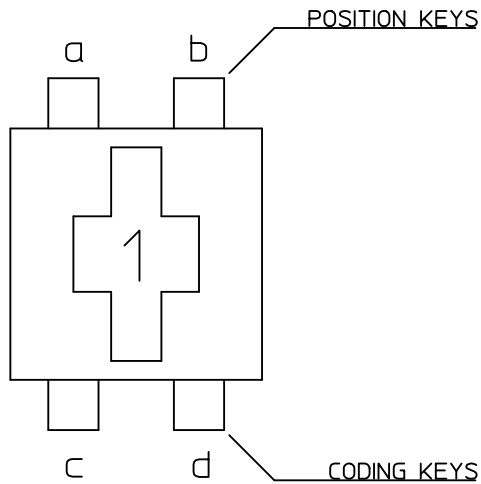
3. PACKAGING SPECIFICATION SEE SPEC PK-90833-001

4. REFER TO APPLICATION SPECIFICATION AS-99033-0004

changed plating spec EC NO: E2010-0213 DRWN: BRITTLE 2010/01/08 CHKD: T. TOURISH 2010/01/19 APPR: BMAGUIRE 2010/01/19	DESCRIPTION REV	QUALITY SYMBOLS	GENERAL TOLERANCES (UNLESS SPECIFIED)		DIMENSION STYLE MM ONLY		SCALE 2:1	DESIGN UNITS METRIC	THIRD ANGLE PROJECTION		
		▽=0 ▽=0	mm INCH 4 PLACES ± --- ± --- 3 PLACES ± --- ± --- 2 PLACES ± 0.05 ± --- 1 PLACE ± 0.10 ± --- ANGULAR ± 2 °	DRAWN BY B. RUTTLE CHECKED BY T. TOURISH APPROVED BY BMAGUIRE	DATE 2009/03/03 DATE 2009/03/03 DATE 2009/03/03	TITLE 5MM APPLI-MATE 1CKT 10A FEMALE CONNECTOR V0 HWI HOUSING					
		DRAFT WHERE APPLICABLE MUST REMAIN WITHIN DIMENSIONS			SEE SHEET 2		MOLEX INCORPORATED DOCUMENT NO. SD-93213-001			SHEET NO. 1 OF 2	
		THIS DRAWING CONTAINS INFORMATION THAT IS PROPRIETARY TO MOLEX INCORPORATED AND SHOULD NOT BE USED WITHOUT WRITTEN PERMISSION									

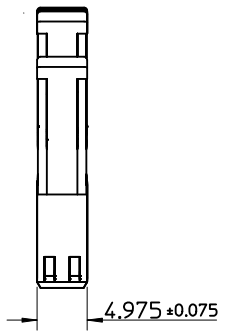
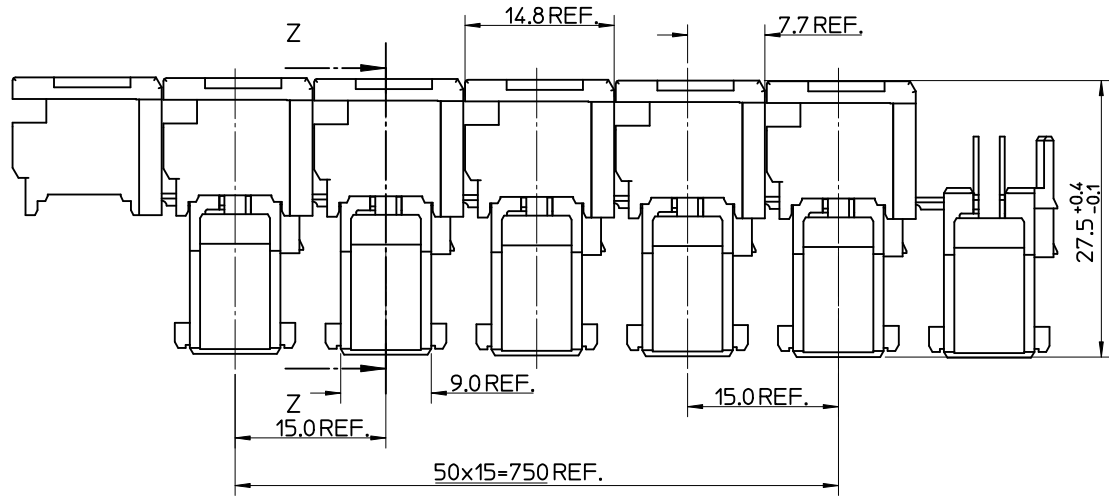
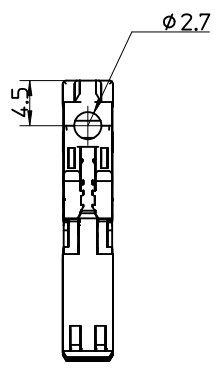
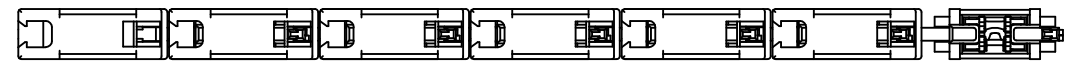
9 8 7 6 5 4 3 2 1

MOLEX PART NUMBER	TERMINAL (see note1 sheet1)	COLOUR	POSITION KEYS	CODING KEYS	CONFIGURATION	REF.
93213-0102	OPTION 1 (TIN)	BLACK	b	c d		K02
93213-3102	OPTION 2 (SILVER)					
93213-0103	OPTION 1 (TIN)	BLACK	NONE	NONE		K**
93213-3103	OPTION 2 (SILVER)					
93213-0104	OPTION 1 (TIN)	BLACK	NONE	c		K11
93213-3104	OPTION 2 (SILVER)					
93213-0105	OPTION 1 (TIN)	BLACK	a	c		K09
93213-3105	OPTION 2 (SILVER)					
93213-0106	OPTION 1 (TIN)	BLACK	a, b	c, d		K00
93213-3106	OPTION 2 (SILVER)					
93213-0107	OPTION 1 (TIN)	BLACK	a, b	d		K01
93213-3107	OPTION 2 (SILVER)					

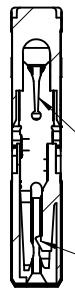


POSITION & CODING KEYS IDENTIFICATION

SEE SHEET 1 EC NO: E2010-0213 DRWN:BRUTTLE 2010/01/08 CHK'D:T. TOURISH 2010/01/19 APPR:BMAGUIRE 2010/01/19	QUALITY SYMBOLS	GENERAL TOLERANCES (UNLESS SPECIFIED)		DIMENSION STYLE MM ONLY		SCALE 2:1	DESIGN UNITS METRIC	THIRD ANGLE PROJECTION																																											
	=0 =0	<table border="1"> <thead> <tr> <th></th> <th>mm</th> <th>INCH</th> </tr> </thead> <tbody> <tr> <td>4 PLACES</td> <td>± ---</td> <td>± ---</td> </tr> <tr> <td>3 PLACES</td> <td>± ---</td> <td>± ---</td> </tr> <tr> <td>2 PLACES</td> <td>± 0.05</td> <td>± ---</td> </tr> <tr> <td>1 PLACE</td> <td>± 0.10</td> <td>± ---</td> </tr> </tbody> </table>		mm	INCH	4 PLACES	± ---	± ---	3 PLACES	± ---	± ---	2 PLACES	± 0.05	± ---	1 PLACE	± 0.10	± ---	<table border="1"> <thead> <tr> <th>mm</th> <th>INCH</th> </tr> </thead> <tbody> <tr> <td>± 0.10</td> <td>± 0.004</td> </tr> <tr> <td>± 0.20</td> <td>± 0.008</td> </tr> <tr> <td>± 0.30</td> <td>± 0.012</td> </tr> <tr> <td>± 0.50</td> <td>± 0.020</td> </tr> <tr> <td>± 0.75</td> <td>± 0.030</td> </tr> <tr> <td>± 1.00</td> <td>± 0.040</td> </tr> <tr> <td>± 1.50</td> <td>± 0.060</td> </tr> <tr> <td>± 2.00</td> <td>± 0.080</td> </tr> <tr> <td>± 3.00</td> <td>± 0.120</td> </tr> <tr> <td>± 4.00</td> <td>± 0.160</td> </tr> <tr> <td>± 6.00</td> <td>± 0.240</td> </tr> <tr> <td>± 8.00</td> <td>± 0.320</td> </tr> <tr> <td>± 10.00</td> <td>± 0.400</td> </tr> </tbody> </table>	mm	INCH	± 0.10	± 0.004	± 0.20	± 0.008	± 0.30	± 0.012	± 0.50	± 0.020	± 0.75	± 0.030	± 1.00	± 0.040	± 1.50	± 0.060	± 2.00	± 0.080	± 3.00	± 0.120	± 4.00	± 0.160	± 6.00	± 0.240	± 8.00	± 0.320	± 10.00	± 0.400	DRAWN BY: B. RUTTLE DATE: 2009/03/03 CHECKED BY: T. TOURISH DATE: 2009/03/03 APPROVED BY: BMAGUIRE DATE: 2009/03/03	TITLE: 5MM APPLI-MATE 1CKT 10A FEMALE CONNECTOR V0 HWI HOUSING			
		mm	INCH																																																
	4 PLACES	± ---	± ---																																																
3 PLACES	± ---	± ---																																																	
2 PLACES	± 0.05	± ---																																																	
1 PLACE	± 0.10	± ---																																																	
mm	INCH																																																		
± 0.10	± 0.004																																																		
± 0.20	± 0.008																																																		
± 0.30	± 0.012																																																		
± 0.50	± 0.020																																																		
± 0.75	± 0.030																																																		
± 1.00	± 0.040																																																		
± 1.50	± 0.060																																																		
± 2.00	± 0.080																																																		
± 3.00	± 0.120																																																		
± 4.00	± 0.160																																																		
± 6.00	± 0.240																																																		
± 8.00	± 0.320																																																		
± 10.00	± 0.400																																																		
	DRAFT WHERE APPLICABLE MUST REMAIN WITHIN DIMENSIONS	MATERIAL NO. SEE CHART	MOLEX INCORPORATED DOCUMENT NO. SD-93213-001		SHEET NO. 2 OF 2																																														
		SIZE A3	THIS DRAWING CONTAINS INFORMATION THAT IS PROPRIETARY TO MOLEX INCORPORATED AND SHOULD NOT BE USED WITHOUT WRITTEN PERMISSION																																																

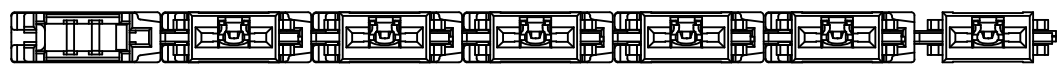


Z-Z



IDT TAKES 1.00mm²
CABLE SEE APPLICATION
SPECIFICATION AS-99033-0004

LOCKING TAB



NOTES:

- MATERIALS:
HOUSING: PA66 UL94 V-0
TERMINAL: COPPER ALLOY, 0.5 REF THICK
PLATING: OPTION 1: 5um MIN PURE Sn ALL OVER
 OPTION 2: 2um MIN SILVER IN CONTACT AREA
 0.05um MIN SILVER FLASH ALLOVER
- PRODUCT CONFORMS TO SPECIFICATION PS-99020-0037
- PACKAGING SPECIFICATION SEE SPEC PK-90833-001
- REFER TO APPLICATION SPECIFICATION AS-99033-0004

ORIGINAL RELEASE	2010/08/30
EC NO: E2011-0085	2010/09/13
DRWN: BRUTTLE	2010/09/21
CHKD:	
APPR: BMAGUIRE	
REV	DESCRIPTION
A	

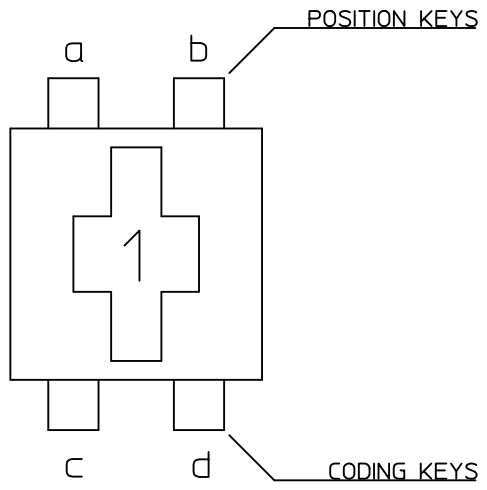
QUALITY SYMBOLS	▽=0
	∇=0

GENERAL TOLERANCES (UNLESS SPECIFIED)	mm	INCH
	4 PLACES ± ---	± ---
	3 PLACES ± ---	± ---
	2 PLACES ± 0.05	± ---
	1 PLACE ± 0.10	± ---
	ANGULAR ± 2 °	
DRAFT WHERE APPLICABLE MUST REMAIN WITHIN DIMENSIONS		

DIMENSION STYLE		SCALE	DESIGN UNITS
MM ONLY		2:1	METRIC
DRAWN BY	DATE	TITLE	
B. RUTTLE	2009/03/03	5MM APPLI-MATE 1CKT 12A FEMALE CONNECTOR V0 HWI HOUSING	
CHECKED BY	DATE	MOLEX INCORPORATED	
T. TOURISH	2009/03/03		
APPROVED BY	DATE	DOCUMENT NO.	
BMAGUIRE	2009/03/03	SD-93277-001	
MATERIAL NO.		SHEET NO.	
SEE SHEET 2		1 OF 2	

THIRD ANGLE PROJECTION	
MOLEX INCORPORATED	
THIS DRAWING CONTAINS INFORMATION THAT IS PROPRIETARY TO MOLEX INCORPORATED AND SHOULD NOT BE USED WITHOUT WRITTEN PERMISSION	

MOLEX PART NUMBER	TERMINAL (see note1 sheet1)	COLOUR	POSITION KEYS	CODING KEYS	CONFIGURATION	REF.
93277-0102	OPTION 1 (TIN)	BLACK	b	c d		K02
93277-3102	OPTION 2 (SILVER)					
93277-0103	OPTION 1 (TIN)	BLACK	NONE	NONE		K**
93277-3103	OPTION 2 (SILVER)					
93277-0104	OPTION 1 (TIN)	BLACK	NONE	c		K11
93277-3104	OPTION 2 (SILVER)					
93277-0105	OPTION 1 (TIN)	BLACK	a	c		K09
93277-3105	OPTION 2 (SILVER)					
93277-0106	OPTION 1 (TIN)	BLACK	a, b	c, d		K00
93277-3106	OPTION 2 (SILVER)					
93277-0107	OPTION 1 (TIN)	BLACK	a, b	d		K01
93277-3107	OPTION 2 (SILVER)					



SEE SHEET 1 EC NO: E2011-0085 DRWN: BRUTTLE 2010/08/30 CHKD: 2010/09/13 APPR: BMAGUIRE 2010/09/21	QUALITY SYMBOLS	GENERAL TOLERANCES (UNLESS SPECIFIED)	DIMENSION STYLE	SCALE	DESIGN UNITS	THIRD ANGLE PROJECTION
	▼=0 ▽=0	mm INCH 4 PLACES ± --- ± --- 3 PLACES ± --- ± --- 2 PLACES ± 0.05 ± --- 1 PLACE ± 0.10 ± --- ANGULAR ± 2 °	MM ONLY	2:1	METRIC	
	DESCRIPTION	DRAFT WHERE APPLICABLE MUST REMAIN WITHIN DIMENSIONS	DRAWN BY: B. RUTTLE DATE: 2009/03/03 CHECKED BY: T. TOURISH DATE: 2009/03/03 APPROVED BY: BMAGUIRE DATE: 2009/03/03	TITLE: 5MM APPLI-MATE 1CKT 12A FEMALE CONNECTOR V0 HWI HOUSING		
	REV	SIZE: A3	MATERIAL NO.	MOLEX INCORPORATED DOCUMENT NO. SD-93277-001		SHEET NO. 2 OF 2

THIS DRAWING CONTAINS INFORMATION THAT IS PROPRIETARY TO MOLEX INCORPORATED AND SHOULD NOT BE USED WITHOUT WRITTEN PERMISSION