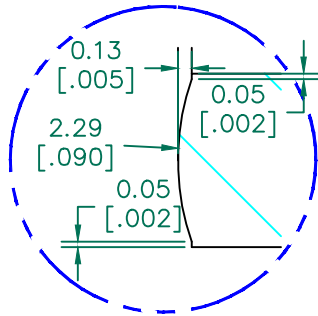


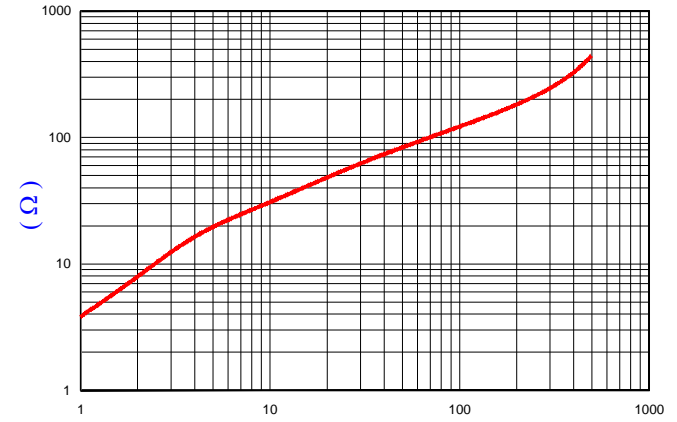
SECTION A-A



DETAIL "A"
SCALE 15:1

IMPEDANCE (Z)			
Frequency	25 MHz	100 MHz	300 MHz
Nominal (REF)	69 Ω	146 Ω	268 Ω
Minimum	- Ω	117 Ω	- Ω

Z vs. FREQUENCY
(REF. ONLY)



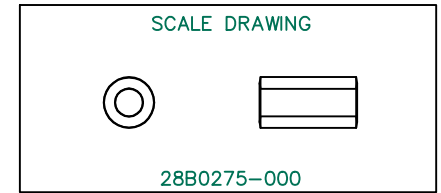
FREQUENCY (MHz)

AGILENT E4991A Impedance/Material Analyzer
HP 16092A-Test Fixture, REF # 3903



NOTES: UNLESS OTHERWISE SPECIFIED

1. COSMETIC SPECIFICATION REFER TO WI-QA-038.



FERRITE CORE DIMENSIONS (SPEC):mm [Inches]

A	7.00 [.276]	±	0.15 [.006]
B	3.80 [.150]	±	0.13 [.005]
C	13.50 [.531]	±	0.28 [.011]

WEIGHT/1000 1.80 kgs [3.98 Lbs]

DIMENSIONS ARE IN MM [INCHES].				This print is the property of Laird Tech. and is loaned in confidence subject to return upon request and with the understanding that no copies shall be made without the written consent of Laird Tech. All rights to design or invention are reserved.			
REV	DESCRIPTION	DATE	INT				
E	UPDATE THE LOGO	05/13/15	QIU	PROJECT/PART NUMBER:		REV	DRAWN BY:
D	UPDATE COMPANY LOGO	01/07/13	QIU	28B0275-000		E	JRK
C	UPDATE Z SPECS. & COMPANY LOGO	05/21/07	JRK	DATE:	01/13/04	SCALE:	5:1
B	ADD ELECTRICAL SPECS AND CURVE	02/17/04	JRK	CAD #	28B0275-000-E	TOOL #	B0275
A	ORIGINAL DRAFT	01/13/04	JRK			MATERIAL:	
REV	DESCRIPTION	DATE	INT			FERRITE	