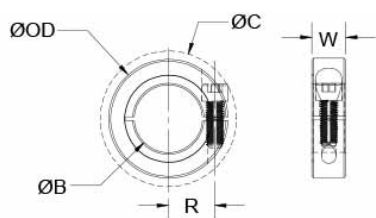




CL-9-SS

Ruland CL-9-SS, 9/16" One-Piece Shaft Collar, 303 Stainless Steel, Clamp Style, 1 1/4" OD, 0.437" Width



Description

Ruland CL-9-SS is a one-piece shaft collar with a 0.5625" bore, 1 1/4" OD, and 0.437" width. The clamp style design does not mar the shaft, is easy to remove, and is indefinitely adjustable. It is commonly used for guiding, spacing, stopping, mounting, and component alignment. Equipment manufacturers benefit from the tightly controlled face to bore perpendicularity (TIR of ? .002"). Perpendicularity is critical for alignment when the shaft collar is used as a load bearing face, mechanical stop, or for mounting components such as gears or bearings. Proprietary processes have been developed by Ruland to maintain superior fit, finish, and holding power. CL-9-SS is stamped with the Ruland name and bore size for ease of identification. Forged screws test beyond ANSI standards to ensure maximum holding power. CL-9-SS is manufactured from solid bar stock sourced from select North American mills and machined to a fine burr free finish. Ruland uses 303 stainless steel with hardware of like material for consistent corrosion resistance. Stainless steel hardware undergoes a proprietary surface treatment process to prevent galling. CL-9-SS is RoHS3 and REACH compliant and manufactured in our Marlborough, MA factory under strict controls using proprietary processes.

Product Specifications

Bore (B)	0.5625 in	Bore Tolerance	+0.0020 in / +0.0005 in
Outer Diameter (OD)	1 1/4 in	Clearance Diameter (C) MAX	1.448 in
Width (W)	0.437 in	Width Tolerance	+0.003 in / -0.010 in
Recommended Shaft Tolerance	+0.0000 in / -0.0005 in	Forged Clamp Screw	#10-32
Screw Material	18-8 300 Series Stainless Steel	Hex Wrench Size	5/32 in
Screw Finish	Bright	Seating Torque	45 lb-in
Screw Location (R)	0.448 in	Number of Screws	1 ea
Material Specification	Type 303 Austenitic, Non-Magnetic Bar	Finish Specification	Bright, No Plating
Manufacturer	Ruland Manufacturing	Country of Origin	USA
Temperature	-40°F to 350°F (-40°C to 176°C)	Weight (lbs)	0.115100
UPC	634529001578	Tariff Code	8483.60.8000
UNSPC	31162811		
Note 1	Performance ratings are for guidance only. The user must determine suitability for a particular application.		
Prop 65	⚠️ WARNING This product can expose you to the chemical Nickel (metallic), known to the State of California to cause cancer. For more information go to www.P65Warnings.ca.gov .		

Installation Instructions

1. Use the CL-9-SS one-piece shaft collar as it is received.
2. Wipe the bore clean.
3. Apply a thin coat of light oil to the shaft.
4. Place the collar onto the desired shaft location with the groove side as the work surface. Tighten the collar using a 5/32 in hex wrench until a slight resistance is felt.
5. Wring collar into its final position and tighten the screw to the full recommended seating torque of 45 lb-in using a 5/32 in torque wrench.