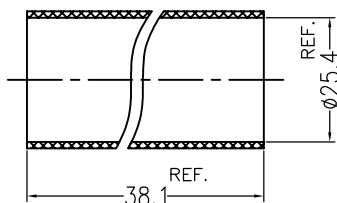
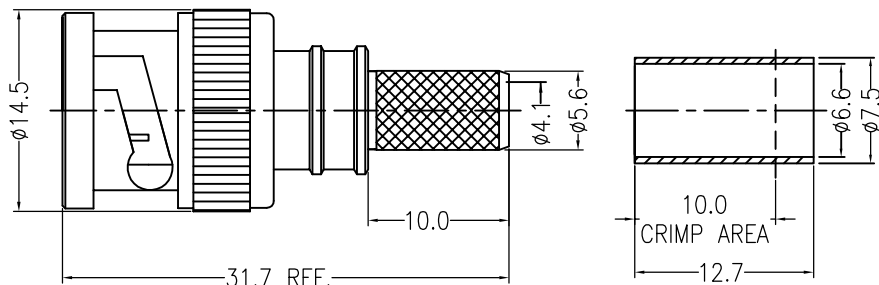
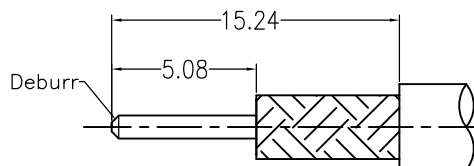


NOTICE OF PROPRIETARY RIGHTS THIS DOCUMENT CONTAINS CONFIDENTIAL DATA, INCLUDING TRADE SECRETS, PROPRIETARY TO TIMES MICROWAVE SYSTEMS. DISCLOSURE OF THIS DATA IS EXPRESSLY CONDITIONED UPON YOUR ASSENT THAT ITS USE IS LIMITED TO USE WITH YOUR COMPANY ONLY. ANY OTHER USE IS STRICTLY PROHIBITED WITHOUT THE PRIOR WRITTEN CONSENT OF TIMES MICROWAVE SYSTEMS.

SYM	REVISION DESCRIPTION	DFTM	DATE	APPD	APPD
A	RELEASED FOR PRODUCTION	Joslen	2015.01.14	TZ	2015.01.14



Heat Shrink Tube



RECOMMENDED CABLE STRIPPING DIM'S
Connector adds: 16.7 mm

I. MATERIALS & FINISHES

Components	Materials	Finishes	Thk. (μ ")
Body	Brass	Albaloy	80
Center Cont.	PB BRONZE	Gold	50
Insulator	PTFE	--	--
Gasket	Silicone	--	--
Ferrule	Copper	Albaloy	80

II. ELECTRICAL PROPERTIES

Impedance (Ω):	50
Frequency Range (GHz):	DC to 4 GHz
Working Voltage (V):	500
Insulation Resistance (M Ω):	≥ 500
VSWR:	≤ 1.30
Insertion Loss(dB, f/GHz):	$-0.1x \sqrt{f}$

III. ENVIRONMENT PROPERTIES

Temperature Range:	-55 $^{\circ}$ C~+85 $^{\circ}$ C
Thermal Shock:	MIL-STD 202G, Meth.107, Cond.B
Vibration:	MIL-STD 202G, Meth.204, Cond.B
Shock:	MIL-STD 202G, Meth.213, Cond I
Climatic Class:	IEC 60068 55/155/56
(2002/95/EC)RoHS:	Compliant

IV. MECHANICAL PROPERTIES

Center Cont.:	Captive
Outer Cont.:	Crimp
Coupling Nut Torque (N.m):	N/A
Cbl-Connector Retention Force (N):	300
Climatic Class:	IEC 60068 55/155/56
Durability (cycles):	500

V. TOOLING

Stripping Tool: 3192-070/CST-240
Crimping Tool: 3190-667/CT-240/200/100

According to Standard: IEC 61169-16

MATERIAL: N/A	UNLESS OTHERWISE SPECIFIED		DFTM. Joslen	TIMES MICROWAVE SYSTEMS		
	ALL DIMENSIONS ARE IN mm MACHINED SURFACES FINISH 1.6 RMS MAX. REMOVE ALL BURRS 0.15X45 $^{\circ}$ MAX. BREAK MACHINE CORNERS 0.15X45 $^{\circ}$ D MAX. FILLET R. TOLERANCES ON DECIMALS .X ± 0.3 .XX ± 0.15 ANGLES $\pm 2^{\circ}$ FRACTIONS $\pm N/A$		DATE 2015.01.14			
			CHKD KG	EZ-240-BM-X BNC Male (Plug) Straight Crimp Connector for LMR-240 Cable		
			DATE 2015.01.14			
USED ON: O	DO NOT SCALE DRAWING		APPD TZ			
SCALE: N/A	DWG SIZE: A4	CODE IDENT: 68999	DATE: 2015.01.14	SHEET: 1 OF 1	3190-6120	REV: A