

Coaxial Bandpass Filter

50Ω 2000 to 2260 MHz

VBFZ-2130-S+



Generic photo used for illustration purposes only

CASE STYLE: FF1145

Connectors	Model
SMA	VBFZ-2130-S+

+RoHS Compliant

The +Suffix identifies RoHS Compliance. See our web site for RoHS Compliance methodologies and qualifications

Maximum Ratings

Operating Temperature	-55°C to 100°C
Storage Temperature	-55°C to 100°C
RF Power Input*	7W at 25°C

*Passband rating, derate linearly to 3W at 100°C ambient. Permanent damage may occur if any of these limits are exceeded.

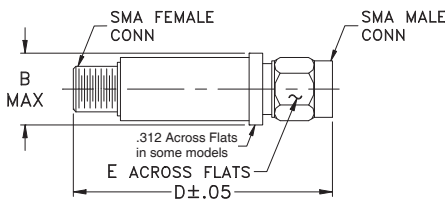
Features

- Good Rejection, 30dB up to 18GHz
- Low insertion loss
- Excellent power handling, 7W
- Temperature stable LTCC internal structure
- Rugged stainless steel unibody
- Protected by US Patent 6,943,646

Applications

- Harmonic rejection
- Transmitters/receivers
- Lab use
- Test instrumentation

Outline Drawing



Outline Dimensions (inch mm)

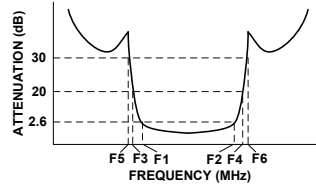
B	D	E	wt.
.410	1.91	.312	grams
10.41	48.51	7.92	11.8

Note: Please refer to case style drawing for details

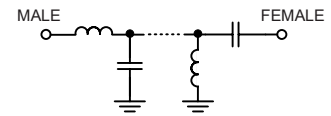
Bandpass Filter Electrical Specifications (T_{AMB} = 25°C)

CENTER FREQ. (MHz) Fc	PASSBAND (MHz) (Loss < 2.6dB)	STOPBANDS (MHz)				VSWR (:1)		
		(Loss > 20dB)		(Loss 30dB Typ)		Passband		Stopband
	F1 - F2	F3	F4	F5	F6	Typ.	Max.	Typ.
2130	2000 - 2260	1420	2950	1400	2950 - 18000	1.6	2.8	20

Typical Frequency Response

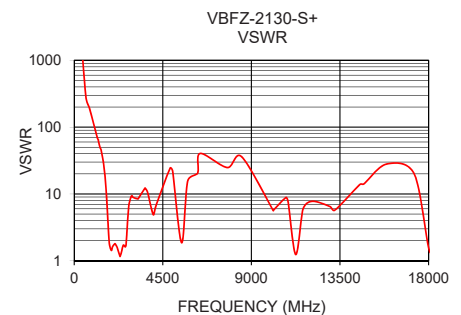
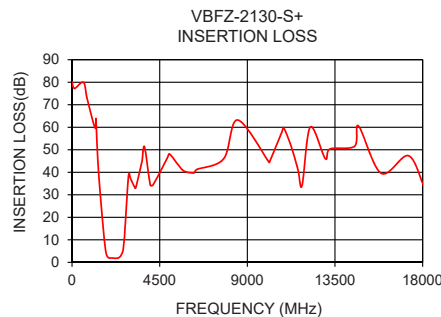


Functional Schematic



Typical Performance Data at 25°C

Frequency (MHz)	Insertion Loss (dB)	VSWR (:1)
50	79.71	9101.03
500	80.20	421.71
1010	59.20	108.86
1400	35.53	39.85
1420	33.32	36.94
1605	14.83	13.49
1684	7.90	5.68
1753	3.93	2.43
2000	1.92	1.74
2130	1.88	1.72
2260	1.76	1.32
2540	3.39	1.76
2635	6.41	1.75
2710	13.61	3.83
2795	25.49	7.28
2840	32.11	8.65
2950	39.28	9.32
7000	45.16	38.06
10000	44.11	5.21
18000	34.85	1.59



Notes

- Performance and quality attributes and conditions not expressly stated in this specification document are intended to be excluded and do not form a part of this specification document.
- Electrical specifications and performance data contained in this specification document are based on Mini-Circuit's applicable established test performance criteria and measurement instructions.
- The parts covered by this specification document are subject to Mini-Circuits standard limited warranty and terms and conditions (collectively, "Standard Terms"); Purchasers of this part are entitled to the rights and benefits contained therein. For a full statement of the Standard Terms and the exclusive rights and remedies thereunder, please visit Mini-Circuits' website at www.minicircuits.com/MCLStore/terms.jsp



www.minicircuits.com P.O. Box 350166, Brooklyn, NY 11235-0003 (718) 934-4500 sales@minicircuits.com

REV. E
ECO-005139
EDR-8451U
VBFZ-2130-S+
URJ/RAV
201120
Page 1 of 1