



MultiConnect[®] microCell

LTE CBRS OnGo USB Cellular Modem



MultiConnect[®] microCell is a compact and simple communications platform that makes adding private LTE connectivity to existing assets quick and easy. Intended for use in settings such as vending, control systems, digital signage, smart parking, smart inventory, audio devices, notebooks and tablets.

The MultiConnect microCell is part of MultiTech's comprehensive portfolio of cellular connectivity products optimized for M2M (machine-to-machine) applications. The MultiConnect microCell comes with support for Windows and Linux drivers and is CDC ACM compliant to ensure a plug-and-play experience. The device's modem driver provides a virtual CDC Ethernet interface for ease of installation, configuration and management of cellular connectivity.

MultiConnect microCell has one USB communication port which is also used for power, and external SMA connectors to accommodate two external antennas for cellular connectivity.

With LTE Cat 6 CBRS OnGo shared wireless spectrum, the MultiConnect microCell has more than enough speed to meet the needs of almost any IoT application.

BENEFITS

- Simple, low-cost connectivity solution for dedicated private networks, neutral host networks, and fixed wireless networks
- FCC-Authorized end user device for Band 48 and CBRS OnGo networks
- Approved interoperability with CBRS base stations and access points

FEATURES

- 4G-LTE Cat 6 performance
- Integrated TCP/IP and UDP/IP stacks
- Drivers for Windows 7/8 and 10 and Linux 2.6.x or greater
- Connection Manager
- Two-year warranty

Your Devices & Data



Connecting Your Devices



Wireless Service Provider

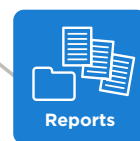


Asset Management Platform

Insight + Action + Control



Alerts



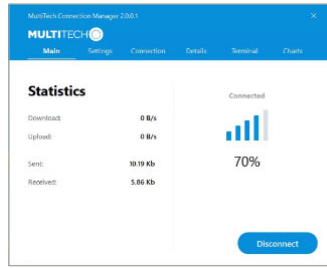
Reports



Real-Time Management

MultiTech Connection Manager

A software solution designed to greatly simplify and ease the installation, configuration and management of cellular connectivity in MultiTech USB and serial cellular modems that lack intelligence to manage these functions. Connection Manager ensures that IoT edge applications using cellular backhaul can always communicate to the Internet whenever needed by ensuring the cellular connection is always ready for transmission, ensuring the smooth operation of real-world IoT use cases. AT Commands, traditionally used to manage these functions, can prove time-consuming and difficult to the un-initiated. Connection Manager provides a much easier and faster method of managing USB and serial cellular modems to ensure persistent connectivity to the cellular network.



SPECIFICATIONS

Models	MTCM2-L6G1
Performance	LTE Cat 6
Frequency Band (MHz)	3GPP Release 10 4G LTE TDD: CBRS Band 48, Band 42 and Band 43
Packet Data*	Up to 200 Mbps downlink / Up to 15 Mbps uplink
Diversity /MIMO	Rx Diversity and MIMO DL 2x2
Operating System Support	Windows 7/8 and 10 Linux (2.6.x or greater)
Power Requirements	
Voltage	USB powered - 5V
Connectors	
RF Antenna	External 50 ohm SMA (female connector)
SIM	Micro SIM (3FF); 1.8 and 3V
USB	USB Type A (USB 2.0)
Physical Description	
Physical Dimensions (LxWxH)	2.45" x 1.79" x 0.78" (6.22 x 4.54 x 1.98 cm)
Physical Weight	0.5 lbs (.227 Kg)
Chassis Type	Aluminum
Environmental	
Operating Temperature	-30°C to +70°C -40°C to +85°C (Extended Range)
Storage Temperature	-40°F to +185°F (-40°C to +85°C)
Relative Humidity	15% to 85% operating and storage
Certifications	
Regulatory Compliance	OnGo FCC Part 96 CBRS, FCC Part 15
Safety	UL 62368-1
Quality	MIL-STD-810G: High Temp, Low Temp, Cold Dwell, Random Vibration and Sine Vibration SAE J1455: Random Vibration and Sine Vibration

* Actual performance speeds may be affected by a variety of attributes such as cell tower distance, data loads, packet sizes, etc.

ORDERING INFORMATION

MultiConnect microCell

Model	Description	Region
MTCM2-L6G1-B03-KIT	Private LTE CBRS OnGo Cat 6 USB Modem with Accessory Kit	USA

Accessory Kit includes two cellular antennas and a USB extension cable.

Go to www.multitech.com for detailed product model numbers. Use ordering codes for specific build options.

Produced in the U.S. of U.S. and non-U.S. components. Features and specifications are subject to change without notice.

Trademarks and Registered Trademarks: MultiTech and the MultiTech logo, MultiConnect: Multi-Tech Systems, Inc. All other products and technologies are the trademarks or registered trademarks of their respective holders.

2021-07 • 86002234 • © 2021 Multi-Tech Systems, Inc. All rights reserved.

Services & Warranty

MultiTech's comprehensive Support Services programs offer a full array of options to suit your specific needs. These services are aimed at protecting your investment, extending the life of your solution or product, and reducing total cost of ownership. Our seasoned technical experts, with an average tenure of more than 10 years, can walk you through smooth installations, troubleshoot issues and help you with configurations.

Technical Support Services

At MultiTech, we're committed to providing you personalized attention and quality service while providing you a quick response to your product support needs. We have several options of support for you to choose from.

For additional information on Support Services as well as other service offerings, please contact your MultiTech representative or visit www.multitech.com/support.go

World Headquarters

Multi-Tech Systems, Inc.
2205 Woodale Drive
Mounds View, MN 55112 U.S.A.
Tel: 763-785-3500
Toll-Free: 800-328-9717
Email: sales@multitech.com
www.multitech.com

EMEA Headquarters

Multi-Tech Systems (EMEA)
Strata House
264-270 Bath Road
Harlington UB3 5JJ
United Kingdom
Tel: +(44) 118 959 7774
Email: sales@multitech.co.uk
www.multitech.co.uk

