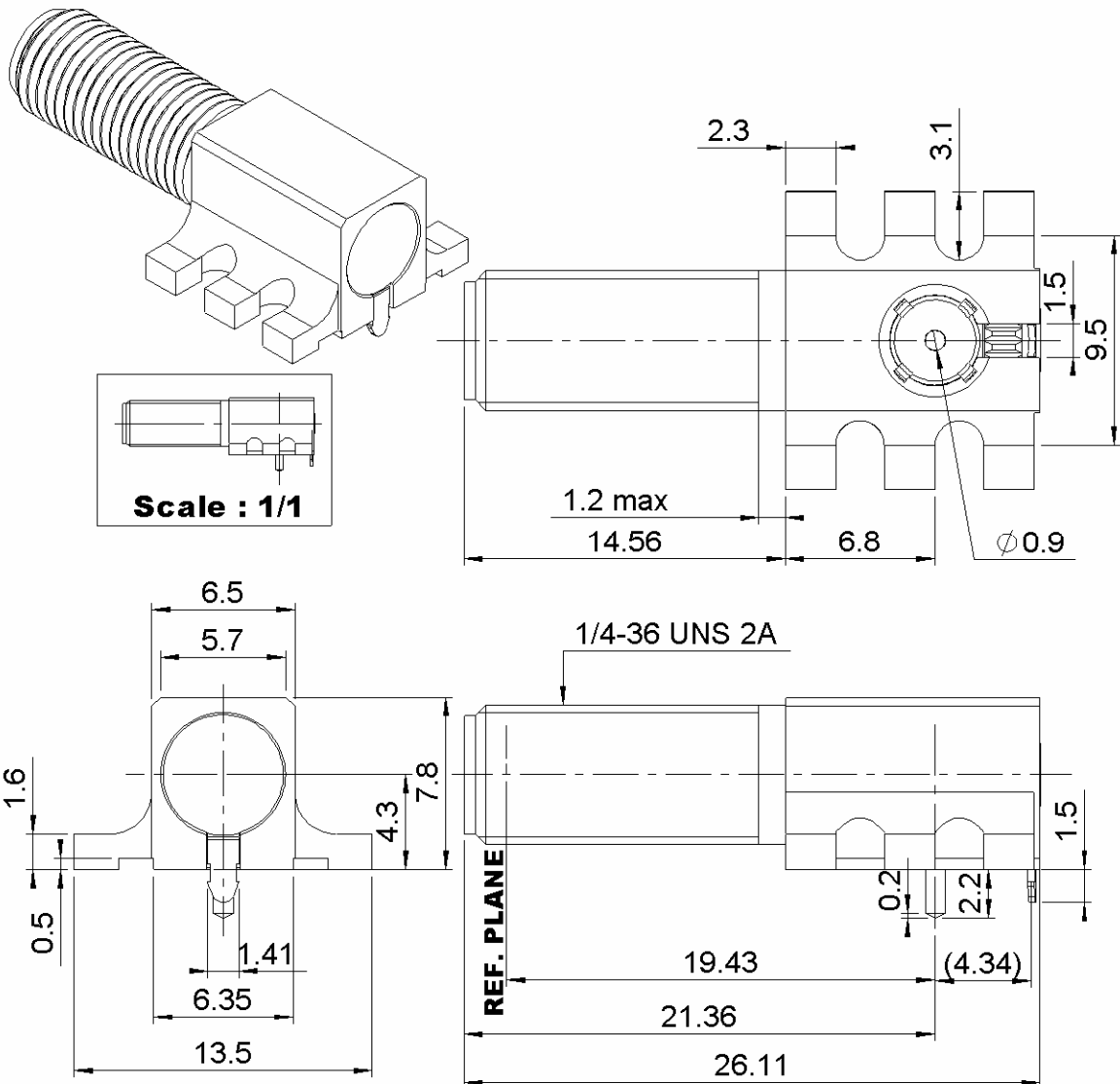


RIGHT ANGLE SMT RECEPTACLE

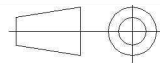
REEL PACKAGING PER 250

R124.682.833

Series : SMA-COM



All dimensions are in mm.



COMPONENTS	MATERIALS	PLATING (µm)
BODY	BRASS	NPGR
CENTER CONTACT	BERYLLIUM COPPER	NPGR
OUTER CONTACT		
INSULATOR	PTFE	
GASKET		
OTHERS PARTS	BRASS	GOLD OVER COPPER
.	.	.
.	.	.

Issue : 1222 C

In the effort to improve our products, we reserve the right to make changes judged to be necessary.



RIGHT ANGLE SMT RECEPTACLE

R124.682.833

REEL PACKAGING PER 250

Series : SMA-COM

PACKAGING

SPECIFICATION

Standard	Unit	Other
250	'W' option	Contact us

ELECTRICAL CHARACTERISTICS

ENVIRONMENTAL

Impedance	50	Ω
Frequency	0-18	GHz
VSWR	*1.15 + 0,0400	x F(GHz) Maxi
Insertion loss	0.16	\sqrt{F} (GHz) dB Maxi
RF leakage	- (90	- F(GHz)) dB Maxi
Voltage rating	350	Veff Maxi
Dielectric withstanding voltage	1000	Veff mini
Insulation resistance	5000	M Ω mini

Operating temperature	-65/+165	$^{\circ}$ C
Hermetic seal	NA	Atm.cm3/s
Panel leakage	NA	

OTHER CHARACTERISTICS

Assembly instruction **NA**

Others :

*Coaxial transmission line only

MECHANICAL CHARACTERISTICS

Center contact retention		
Axial force – Mating end	15	N mini
Axial force – Opposite end	15	N mini
Torque	NA	N.cm mini
Recommended torque		
Mating	NA	N.cm
Panel nut	110	N.cm
Mating life	100	Cycles mini
Weight	7,6630	g

Issue : 1222 C

In the effort to improve our products, we reserve the right to make changes judged to be necessary.

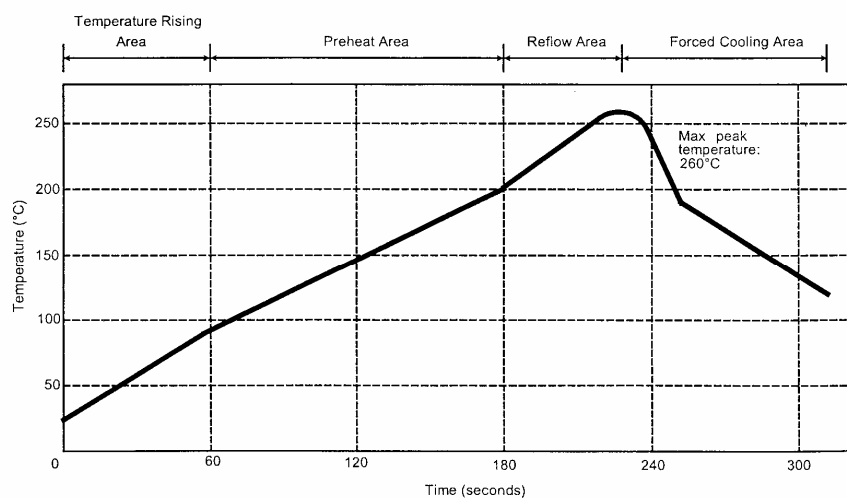
RADIALL 

RIGHT ANGLE SMT RECEPTACLE**R124.682.833****REEL PACKAGING PER 250**

Series : SMA-COM

SOLDER PROCEDURE

1. Deposition of solder paste 'Sn Ag4 Cu0.5' on mounting zone by screen printing application. We recommend a low residue flux.
We advise a thickness of 150 micronmm (5.850 microinch). Verify that the edges of the zone are clean.
2. Placement of the receptacle on the mounting zone with an automatic machine of 'pick and place' type.
Video camera is recommended for the positioning of the component. Adhesive agents must not be used on the receptacle.
3. Soldering by infra-red reflow.
Below, please find the typical profile to use.
4. Cleaning of printed circuit boards.
5. Checking of solder joints and position of the component by visual inspection.

TEMPERATURE PROFILE**Issue : 1222 C**

In the effort to improve our products, we reserve the right to make changes judged to be necessary.

RADIALL 

RIGHT ANGLE SMT RECEPTACLE

R124.682.833

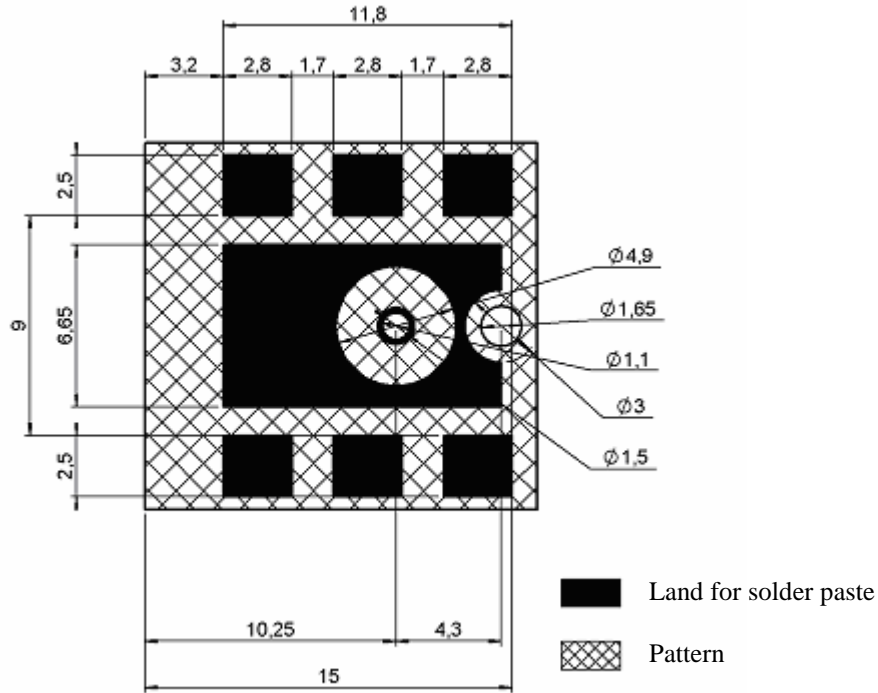
REEL PACKAGING PER 250

Series : SMA-COM

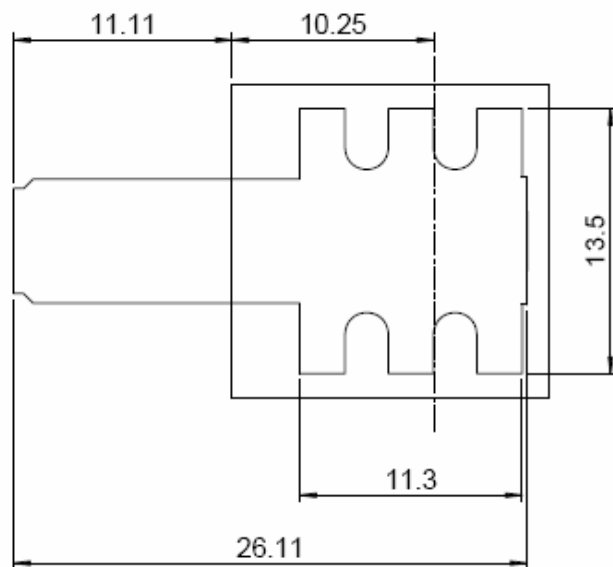
SMA SERIES - INFORMATION

Coplanar line : pattern and signal are on the same side . Thickness of PCB : .063(1.6mm)

The material of PCB is the epoxy resin of glass fabrics bac . (Er = 4.8) . The solder resist should be printed except for the land pattern on the PCB .



SHADOW OF SMA RECEPTACLE FOR VIDEO CAMERA



Issue : 1222 C

In the effort to improve our products, we reserve the right to make changes judged to be necessary.

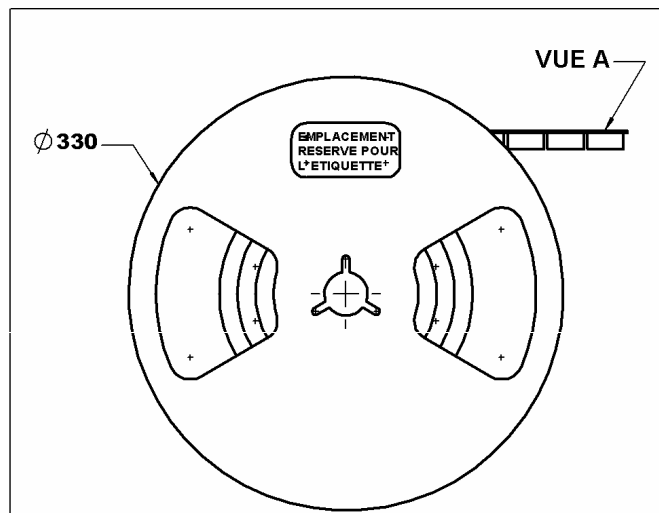


RIGHT ANGLE SMT RECEPTACLE

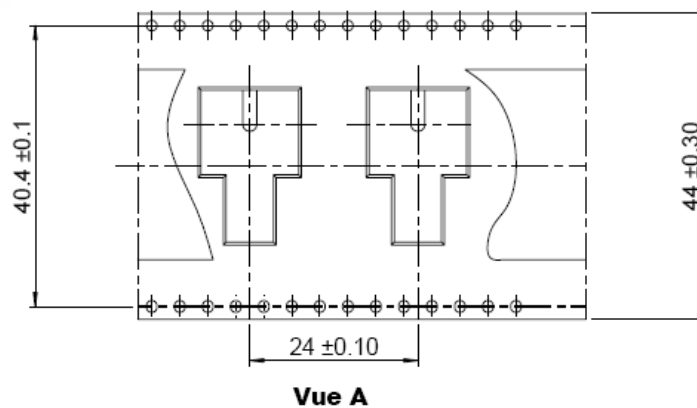
R124.682.833

REEL PACKAGING PER 250

Series : SMA-COM



bobine Ech :0.7



Note: Reel package don't include nut and washer, which are packaged in box.

Issue : 1222 C

In the effort to improve our products, we reserve the right to make changes judged to be necessary.

