

# ON Semiconductor

## Is Now

# onsemi™

To learn more about onsemi™, please visit our website at  
[www.onsemi.com](http://www.onsemi.com)

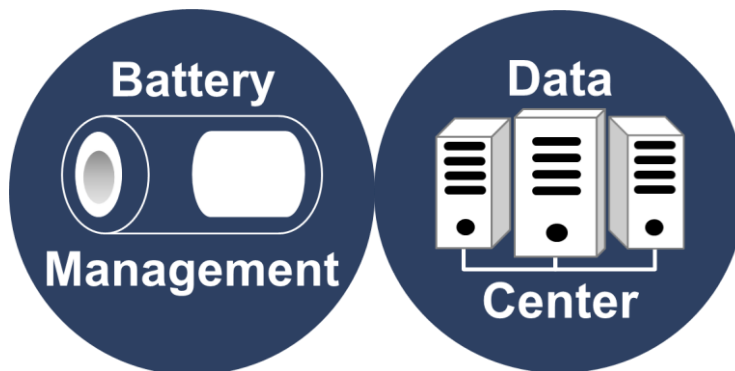
---

**onsemi** and **onsemi** and other names, marks, and brands are registered and/or common law trademarks of Semiconductor Components Industries, LLC dba "**onsemi**" or its affiliates and/or subsidiaries in the United States and/or other countries. **onsemi** owns the rights to a number of patents, trademarks, copyrights, trade secrets, and other intellectual property. A listing of **onsemi** product/patent coverage may be accessed at [www.onsemi.com/site/pdf/Patent-Marking.pdf](http://www.onsemi.com/site/pdf/Patent-Marking.pdf). **onsemi** reserves the right to make changes at any time to any products or information herein, without notice. The information herein is provided "as-is" and **onsemi** makes no warranty, representation or guarantee regarding the accuracy of the information, product features, availability, functionality, or suitability of its products for any particular purpose, nor does **onsemi** assume any liability arising out of the application or use of any product or circuit, and specifically disclaims any and all liability, including without limitation special, consequential or incidental damages. Buyer is responsible for its products and applications using **onsemi** products, including compliance with all laws, regulations and safety requirements or standards, regardless of any support or applications information provided by **onsemi**. "Typical" parameters which may be provided in **onsemi** data sheets and/or specifications can and do vary in different applications and actual performance may vary over time. All operating parameters, including "Typicals" must be validated for each customer application by customer's technical experts. **onsemi** does not convey any license under any of its intellectual property rights nor the rights of others. **onsemi** products are not designed, intended, or authorized for use as a critical component in life support systems or any FDA Class 3 medical devices or medical devices with a same or similar classification in a foreign jurisdiction or any devices intended for implantation in the human body. Should Buyer purchase or use **onsemi** products for any such unintended or unauthorized application, Buyer shall indemnify and hold **onsemi** and its officers, employees, subsidiaries, affiliates, and distributors harmless against all claims, costs, damages, and expenses, and reasonable attorney fees arising out of, directly or indirectly, any claim of personal injury or death associated with such unintended or unauthorized use, even if such claim alleges that **onsemi** was negligent regarding the design or manufacture of the part. **onsemi** is an Equal Opportunity/Affirmative Action Employer. This literature is subject to all applicable copyright laws and is not for resale in any manner. Other names and brands may be claimed as the property of others.



**ON Semiconductor®**

## **Strata Current Sense EVB User Guide**



**Table of Contents**

INTRODUCTION..... 3  
    Features..... 3  
    Applications..... 3  
USER GUIDE ..... 4  
    Hardware Setup ..... 4  
    User Interface ..... 4  
    Telemetry, Controls, and Functionality ..... 5

## Introduction

The Strata Current Sense EVB provides an easy to use evaluation kit within the Strata Development Environment for the NCS210R, NCS211R, NCS213R, NCS214R, and NCS333A current sense amplifiers from ON Semiconductor. Through Strata, the developer can access datasheets, BOMs, schematics, and other collateral they may need. This document will provide instructions on how to use the evaluation kits.

### Features

- Vin Range from 0.1V to 26V
- 5 current reading options ranging from 0 – 30A
  - 0 - 100 $\mu$ A
  - 0 – 2mA
  - 0 – 100mA
  - 0 – 1A
  - 0 – 30A
- Programmable on-board load up to 10A
- Programmable OCP and OVP settings

### Applications

- Current Sensing (High side)
- Power Management
- Battery Management

## User Guide

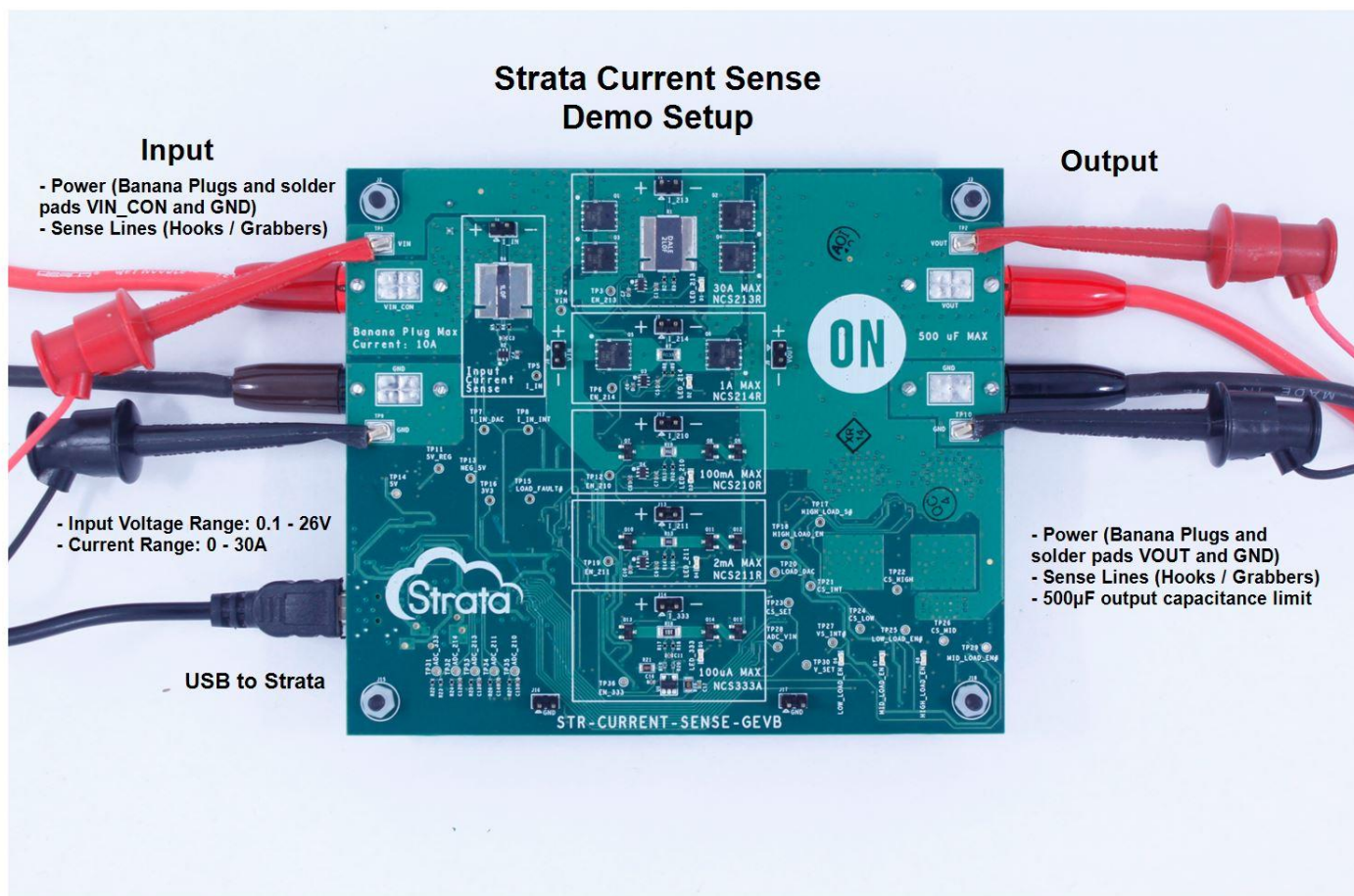
This section will explain how to use the Strata Current Sense EVB in a step by step manner. It will cover the hardware required, how to use the User Interface in Strata, and the controls specific to the current sense amplifiers.

### Hardware Setup

The hardware required to use the Strata Current Sense EVB are a computer (with Windows), a power supply, and a load. Sense lines are recommended if available with equipment being used. Follow the steps below.

1. Plug the power supply into the input of the current sense board using the banana plugs J22 and J24. Do not apply over 26V to the input. The minimum voltage needed for the current sense board to turn on is 0.1V.
2. Connect the computer to the current sense board using the USB connector J26 on the bottom of the board.
3. Plug the load into the output using the banana plugs J21 and J23.
4. If available, connect sense lines to input using TP1 and TP9, and connect sense lines to the output using TP2 and TP10.
5. If currents above 10A are needed, use solder pads VIN\_CON, VOUT\_CON, and GND to solder wires directly to inputs of board. The banana plugs are only rated to 10A.

An example picture of the setup can be found below.

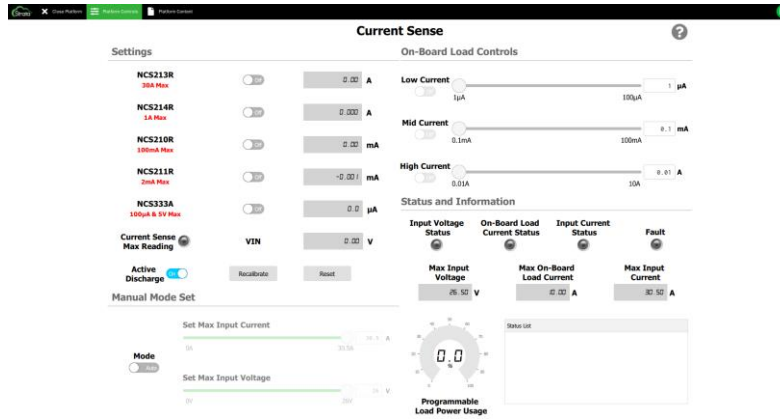


### User Interface

The UI within the Strata app will allow the user to control the current sense board and monitor its telemetry without needing other lab equipment or training to do so. The steps below cover what is in the UI.

1. First, download and install the most recent version of Strata. It can be found here: <https://www.onsemi.com/support/strata-developer-studio>

- Open the Strata app. Login and the home screen will appear.
- The app will automatically detect the device and will bring up the UI for the board that is plugged in.



- The view that comes up is UI for the current sense board. It offers telemetry such as: current sense readings for each current sense amplifier, interrupt statuses for each programmable protection feature, and a status list for error and warning messages. It also offers controls for enables, setting protection settings, and on-board load settings.
- The round button with a question mark in the top right corner of the screen is the help button, which will give the user a description of what everything on the UI is doing.
- To view the collateral provided with the EVB, click on the “Platform Content” tab at the top of the screen.

### Telemetry, Controls, and Functionality

This section will go over the specific telemetry and controls in the UI.

- Current Sense Max Reading – This LED will indicate if the current being drawn through the board exceeds the range of the current sense amplifier trying to measure it.
- Recalibrate – This will recalibrate the offset of the current sense amplifiers. It is recommended this is done before the first measurement or any time the input voltage changes to ensure accurate measurements.
- Reset – This will reset the board to its default state. A reset is required after a fault occurs.
- Active Discharge – This will enable the bleeder circuit to discharge the output when all current sense amplifiers are disconnected.
- Mode – Determines the protection mode the board is in. “Auto” mode means all protection levels are set automatically. “Manual” mode allows the user to set protection levels manually.
- On-Board Load Controls – There are 3 ranges for the on-board load for the user to select from. Each range consists of an enable switch, and a slider to set the current being drawn by that load. Only one load may be used at a time.

ON Semiconductor and the ON Semiconductor logo are trademarks of Semiconductor Components Industries, LLC dba ON Semiconductor or its subsidiaries in the United States and/or other countries. ON Semiconductor owns the rights to a number of patents, trademarks, copyrights, trade secrets, and other intellectual property. A listing of ON Semiconductor's product/patent coverage may be accessed at [www.onsemi.com/site/pdf/Patent-Marking.pdf](http://www.onsemi.com/site/pdf/Patent-Marking.pdf). ON Semiconductor is an Equal Opportunity/Affirmative Action Employer. This literature is subject to all applicable copyright laws and is not for resale in any manner.

The evaluation board/kit (research and development board/kit) (hereinafter the "board") is not a finished product and is as such not available for sale to consumers. The board is only intended for research, development, demonstration and evaluation purposes and should as such only be used in laboratory/development areas by persons with an engineering/technical training and familiar with the risks associated with handling electrical/mechanical components, systems and subsystems. This person assumes full responsibility/liability for proper and safe handling. Any other use, resale or redistribution for any other purpose is strictly prohibited.

The board is delivered "AS IS" and without warranty of any kind including, but not limited to, that the board is production-worthy, that the functions contained in the board will meet your requirements, or that the operation of the board will be uninterrupted or error free. ON Semiconductor expressly disclaims all warranties, express, implied or otherwise, including without limitation, warranties of fitness for a particular purpose and non-infringement of intellectual property rights.

ON Semiconductor reserves the right to make changes without further notice to any board.

You are responsible for determining whether the board will be suitable for your intended use or application or will achieve your intended results. Prior to using or distributing any systems that have been evaluated, designed or tested using the board, you agree to test and validate your design to confirm the functionality for your application. Any technical, applications or design information or advice, quality characterization, reliability data or other services provided by ON Semiconductor shall not constitute any representation or warranty by ON Semiconductor, and no additional obligations or liabilities shall arise from ON Semiconductor having provided such information or services.

The boards are not designed, intended, or authorized for use in life support systems, or any FDA Class 3 medical devices or medical devices with a similar or equivalent classification in a foreign jurisdiction, or any devices intended for implantation in the human body. Should you purchase or use the board for any such unintended or unauthorized application, you shall indemnify and hold ON Semiconductor and its officers, employees, subsidiaries, affiliates, and distributors harmless against all claims, costs, damages, and expenses, and reasonable attorney fees arising out of, directly or indirectly, any claim of personal injury or death associated with such unintended or unauthorized use, even if such claim alleges that ON Semiconductor was negligent regarding the design or manufacture of the board.

This evaluation board/kit does not fall within the scope of the European Union directives regarding electromagnetic compatibility, restricted substances (RoHS), recycling (WEEE), FCC, CE or UL, and may not meet the technical requirements of these or other related directives.

FCC WARNING – This evaluation board/kit is intended for use for engineering development, demonstration, or evaluation purposes only and is not considered by ON Semiconductor to be a finished end product fit for general consumer use. It may generate, use, or radiate radio frequency energy and has not been tested for compliance with the limits of computing devices pursuant to part 15 of FCC rules, which are designed to provide reasonable protection against radio frequency interference. Operation of this equipment may cause interference with radio communications, in which case the user shall be responsible, at its expense, to take whatever measures may be required to correct this interference.

ON Semiconductor does not convey any license under its patent rights nor the rights of others.

LIMITATIONS OF LIABILITY: ON Semiconductor shall not be liable for any special, consequential, incidental, indirect or punitive damages, including, but not limited to the costs of requalification, delay, loss of profits or goodwill, arising out of or in connection with the board, even if ON Semiconductor is advised of the possibility of such damages. In no event shall ON Semiconductor's aggregate liability from any obligation arising out of or in connection with the board, under any theory of liability, exceed the purchase price paid for the board, if any.

---

## PUBLICATION ORDERING INFORMATION

### LITERATURE FULLFILLMENT:

Literature Distribution Center for ON Semiconductor 19521 E.  
32nd Pkwy, Aurora, Colorado 80011 USA

**Phone:** 303-675-2175 or 800-344-3860 Toll Free USA/Canada  
**Fax:** 303-675-2176 or 800-344-3867 Toll Free USA/Canada  
**Email:** [orderlit@onsemi.com](mailto:orderlit@onsemi.com)

### N. American Technical Support:

800-282-9855 Toll Free USA/Canada

### Europe, Middle East and Africa Technical Support:

Phone: 421 33 790 2910

### ON Semiconductor Website:

<https://www.onsemi.com/>

### Order Literature:

<https://www.onsemi.com/orderlit>

For additional information, please contact your local Sales Representative