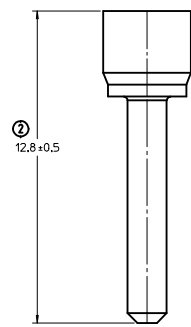
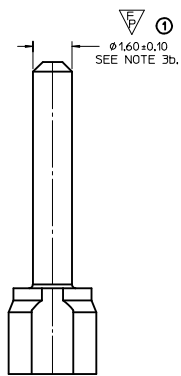
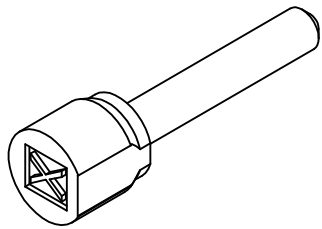
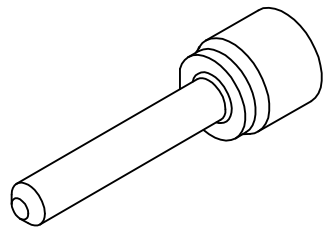


20 19 18 17 16 15 14 13 12 11 10 9 8 7 6 5 4 3 2 1



34996-1501	NATURAL	SALEABLE
PART NUMBER	COLOR	STATUS

NOTES: VALID UNLESS OTHERWISE SPECIFIED  
**1. GENERAL:**  
 a. APPLICATION SPECIFICATION SEE: AS-34900-0001  
 b. PRODUCT SPECIFICATION SEE: PS-34900-0001  
**2. DESIGN**  
 a. MATERIAL: SPS/PA66 20%GF  
**3. SYSTEM REQUIREMENTS:**  
 a. RECOMMENDED FOR USE IN THE MOLEX RECEPTACLE CONNECTOR.  
 FOR PART# REFER SD-34900-2001 AND SD-34900-6001  
 b. RECOMMENDED TO USE WITH PLUG SEAL PART# 34996-1902  
 PER DRAWING# SD-34996-1901

REV	DESCRIPTION
A	INITIAL RELEASE

INSPECTION BALLOON NUMBER LOG		SCALE 12:1		DESIGN UNITS METRIC		THIRD ANGLE PROJECTION	
PER DRAWING REVISION: A				DRAWN BY SKRAJENDRANA		DATE 2014/07/24	
LAST BALLOON NUMBER USED: 28				CHECKED BY		DATE	
ADDED BALLOON NUMBERS: 1-28				APPROVED BY VKOSHY		DATE 2014/08/04	
REMOVED BALLOON NUMBERS:				MATERIAL NO. SEE BOM		DOCUMENT NO. SD-34996-1501	
QUALITY SYMBOLS		GENERAL TOLERANCES (UNLESS SPECIFIED)		DIMENSION STYLE MM ONLY		TITLE 3.55MM Ø, SEAL CAVITY CAVITY PUG	
▽=0		mm INCH		DATE		SHEET NO. 1 OF 1	
▽=0		4 PLACES ± --- ± ---		DATE		SIZE D	
▽=0		3 PLACES ± --- ± ---		DATE		THIS DRAWING CONTAINS INFORMATION THAT IS PROPRIETARY TO MOLEX INCORPORATED AND SHOULD NOT BE USED WITHOUT WRITTEN PERMISSION	
▽=0		2 PLACES ± 0.10 ± ---		DATE			
		1 PLACE ± 0.20 ± ---		DATE			
		0 PLACE ± ±		DATE			
		ANGULAR ± 3 °		DATE			
		DRAFT WHERE APPLICABLE MUST REMAIN WITHIN DIMENSIONS		DATE			

19 18 17 16 15 14 13 12 11 10 9 8 7 6 5 4 3 2 1