

Ratings

Voltage: 600 V
 Temperature: -40~105 °C
 Flammability: VW-1

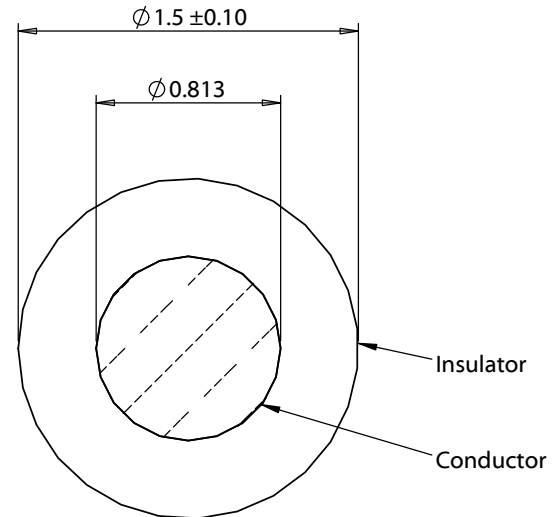
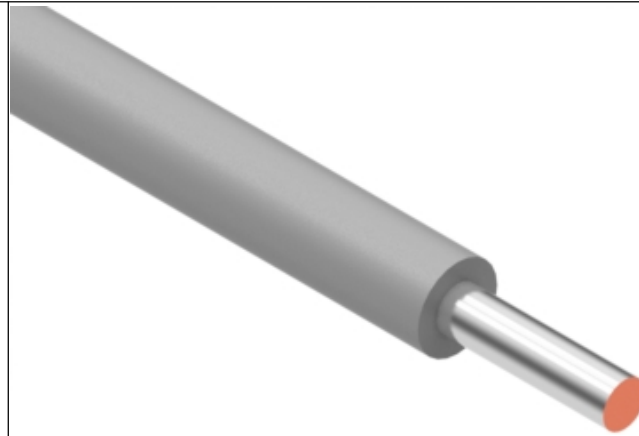
Conductor



Conductor count: 1
 Gauge: 20 AWG 0.52 mm²
 Material: tinned copper
 Strand size: \varnothing 0.813 mm (solid)
 Resistance at 20 °C: 35.2 Ω /km max

Insulator

Material: Polyphenylene Ether, Modified (mPPE)
 Color: gray
 Diameter: \varnothing 1.5 \pm 0.10 mm
 Nominal thickness: 0.32 mm
 Resistance at 20 °C: 100 M Ω /km min

Wire marking: E339579 UL AWM STYLE 11028 20 AWG 105°C
 600V VW-1 --- cUL AWM I A/B 105°C 600V FT1 TENSILITY



| | | | | | |
|-----------|----------|-----------------|--|--|---|
| Revision: | Date: | Description: | Prepared: | Notes: RoHS compliant Phthalate and halogen free | TENSILITY tel 1.541.323.3228 800 877.670.7118 fax 1.541.323.4202 web tensility.com |
| A | 6/2/2021 | Initial release | Verified: | | |
| | | | Dimensions are in millimeters. Tolerances: X: \pm 0.5 mm X.X: \pm 0.3 mm X.XX: \pm 0.05 mm | Description: | Size: Part number: |
| | | | | Wire, hook-up, tinned solid core, 20 AWG, UL 11028, 600V, 105C, 1.5 mm, mPPE, gray | A 30-02080 |
| | | | | Scale: 30:1 |   |

5

4

3

2

1