



L.T.F.

QLUX DOB AC Line Voltage LED Series



**5W QLUXDOBAL29205W56LED9
292mm Linear LED Board**

QLUX DOB



Wattage	5W
Power Factor	0.99
CRI	92.5
CCT Options	2700K, 3000K, Custom
Luminous Flux	≈ 500 lm
Efficacy	≈ 93.1 lm/W
Number of LEDs	56
Beam Angle	160°
Dimensions	292mm x 38mm
Dimming	ELV, Triac



NOTE: Measurements based on 3000K CCT model.

FEATURES

- Driver On Board technology - No external LED driver required.
- CCT options 2700K, 3000K, Custom
- Superior color rendering ≈ 92.5 CRI .
- High efficacy lumen output up to ≈ 93.1 lm/W.
- LM-80 compliant LEDs.
- Tight binning 3 step Mac Adam Ellipses.
- Uniform & crisp light source intensity.
- Hot spot free design.
- California Title 24 Compliant.

- Extra thin low profile.
- Low heat generation, easy thermal management.
- Easy to fit in new design or retrofit applications.
- 277V AC option available.
- L70 > 60,000 Hours



APPLICATIONS

- Residential and Commercial
- New or Retrofit OEM Fixtures

ELECTRICAL SPECIFICATIONS

Model Number	Input	Wattage	CCT Options	Luminous Flux
QLUXDOBAL29205W56LED927	120V AC 0.05A 50/60Hz	5W	2700K	≈ 450 lm
QLUXDOBAL29205W56LED930			3000K	≈ 500 lm



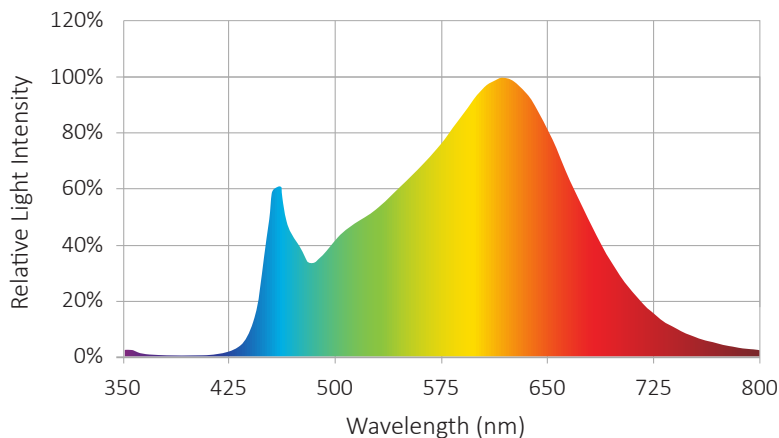
L.T.F.

QLUX DOB AC Line Voltage LED Series



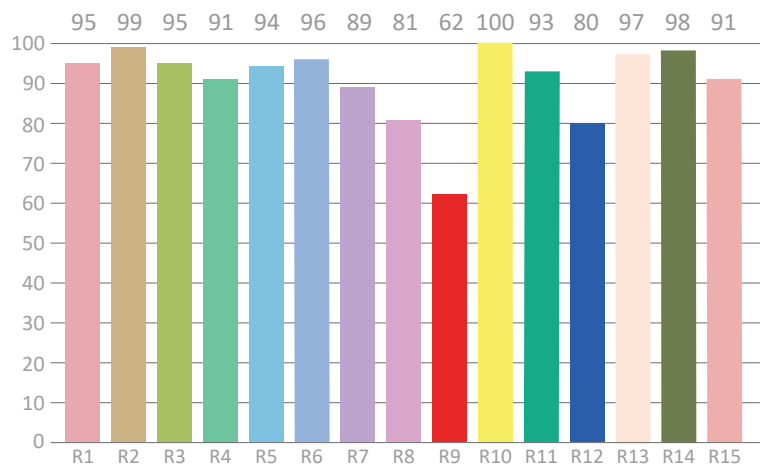
**5W QLUXDOBAL29205W56LED
292mm Linear LED Board**

SPECTRORADIOMETRIC CHARACTERISTICS - 3000K



Luminous Flux: 504.6 lm
Radiant Flux: 1.8 W
Efficacy: 93.1 lm/W
Nominal CCT: ANSI_F3000K
 $x_0=0.4400$ $y_0=0.4030$
Chromaticity Coordinates:
 $x=0.4297$ $y=0.3980$ $u'=0.2485$ $v'=0.5179$
Chromaticity Difference: -0.00141 Duv
CCT: 3075 K

CRI TEST RESULTS - 3000K

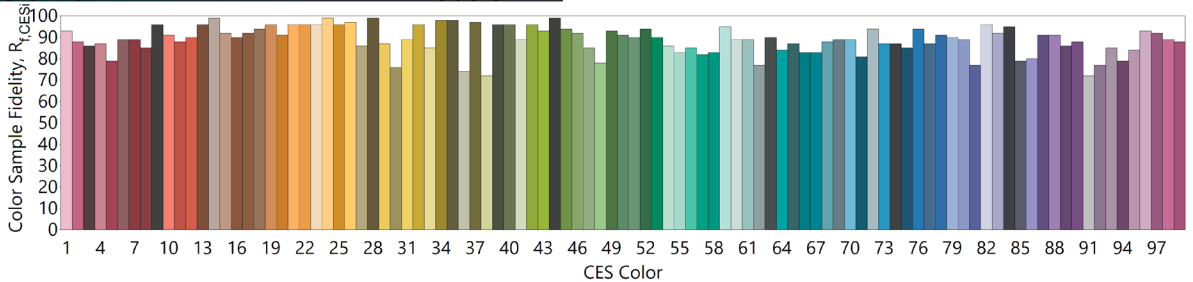
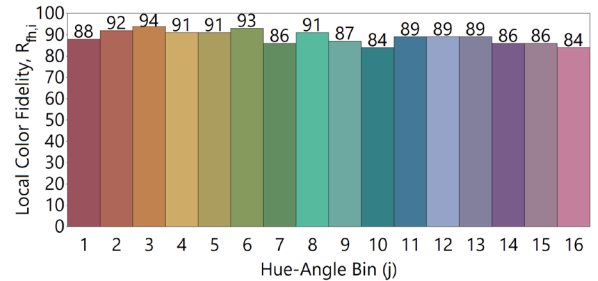
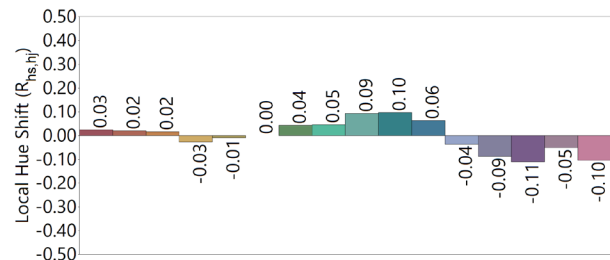
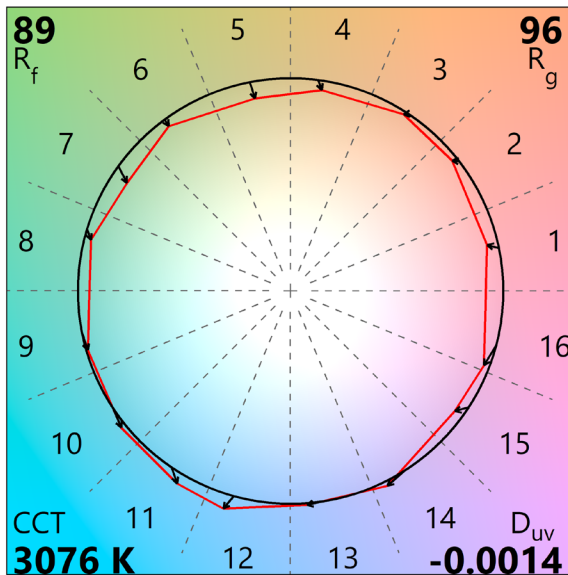
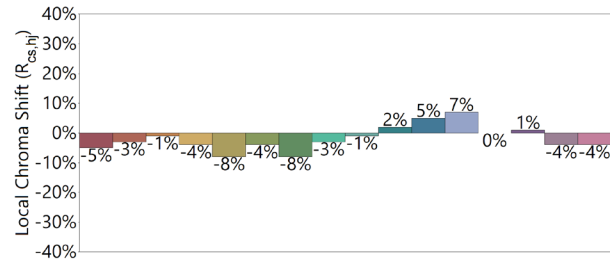
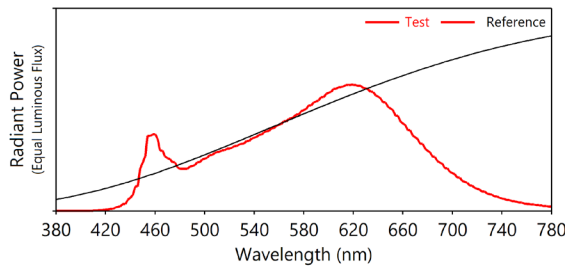


Color Rendering Index (CRI): 92.5
Dominant Wavelength: 582.0 nm(E)
Peak Wavelength: 620nm
Colour Fidelity Index: Rf=87
Gamut Index: Rg=95
Color Purity: 0.4846
Color Ratio: Kr=43.9% Kg=47.1% Kb=9.0%
Color Tolerance (SDCM): 5.3
Bandwidth: 156.2 nm
Photosynthetically Active Radiation (PAR): 1.69W
Photosynthetic Photon Flux (PPF): 8.28 $\mu\text{mol/s}$

R1=95	R2=99	R3=95	R4=91	R5=94	R6=96	R7=89	R8=81
R9=62	R10=100	R11=93	R12=80	R13=97	R14=98	R15=91	Re=91



IES TM-30-18 Test Results - 3000K





L.T.F.

QLUX DOB AC Line Voltage LED Series



QLUXDOBAL29205W56LED9
292mm Linear LED Board

ABSOLUTE MAXIMUM RATINGS (Ta=25°C)

Parameter	Symbol	Value	Unit
Voltage	V in	132	Vac
Operating Temperature	---	-35~+50	°C
LED Solder Temperature	Ts	110	°C
Storage Temperature	Tstg	-40~+100	°C
ESD Sensitivity (HBM)	---	±4000	V
Surge	---	2500	Vac

MECHANICAL SPECIFICATIONS

LED Board Dimensions
292mm x 38mm

