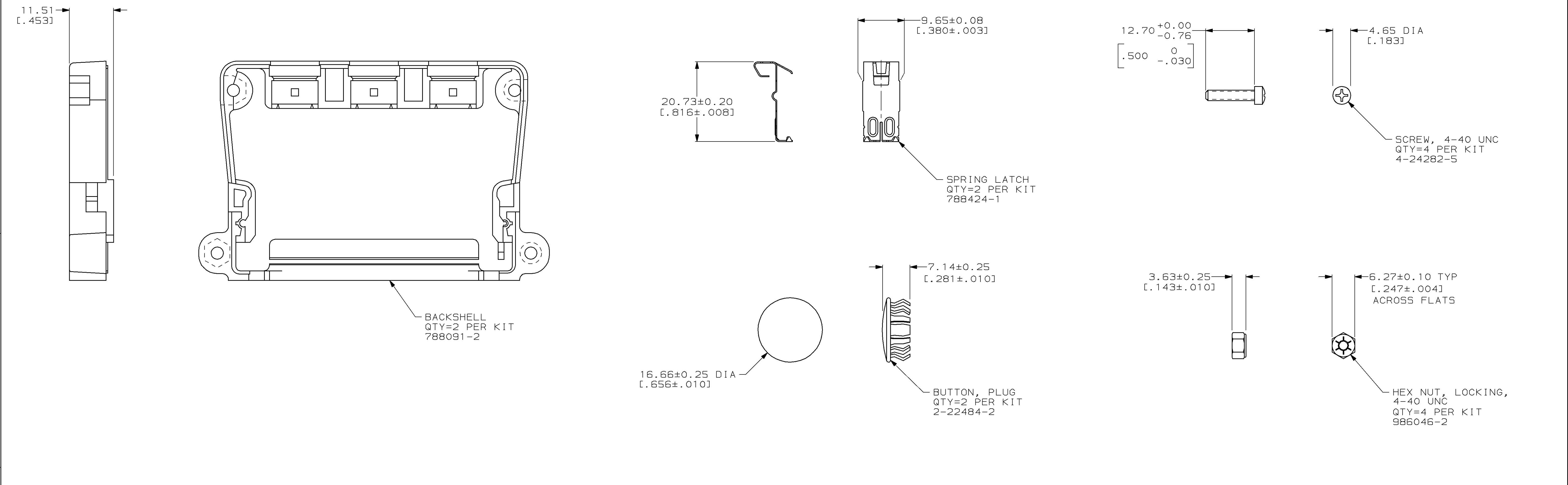
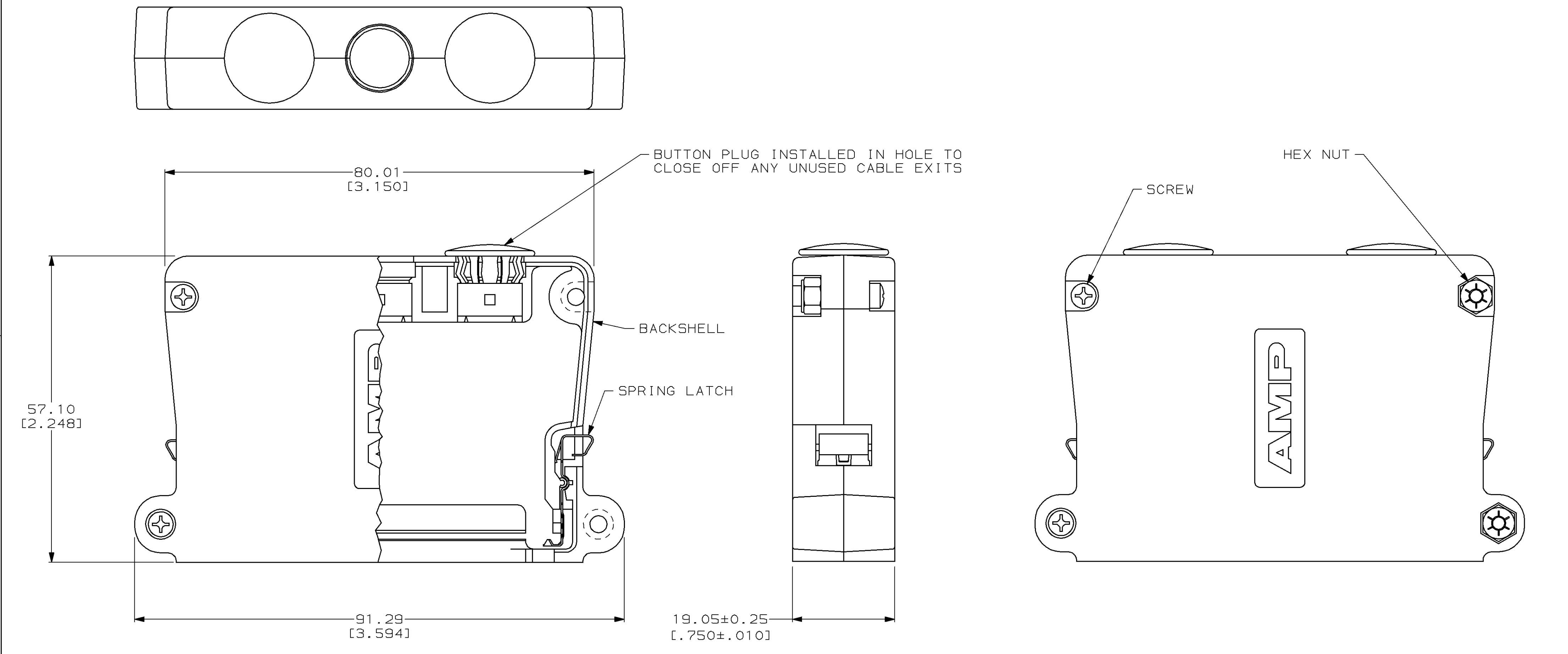


| LOC | DIST | REVISIONS              |           |     |      |
|-----|------|------------------------|-----------|-----|------|
| P   | LTR  | DESCRIPTION            | DATE      | DWN | APVD |
| E   |      | RLSE PER NPR 23        | 10 APR 97 | WGL | -    |
| F   |      | REV PER EC 0320-169-97 | 27 MAY 97 | MB  | GM   |
| G   |      | REV PER EC 0640-321-98 | 28 AUG 98 | MB  | JO   |
| H   |      | REV PER EC 0640-404-98 | 16 OCT 98 | CO  | JO   |



ASSEMBLED VIEWS



- ① BACKSHELL: ABS, NATURAL.  
SPRING LATCH: STAINLESS STEEL, HEAT TREATED.  
SCREW, HEX NUT, AND BUTTON: CARBON STEEL.
- ② BACKSHELL: 4.57µm [0.000180] MIN NICKEL OVER 7.62µm [0.000300] MIN COPPER, ALL OVER 0.25µm [0.000010] MIN ELECTROLESS NICKEL.  
SCREW AND HEX NUT: ZINC; BUTTON: NICKEL.
- ③ KITS ARE INDIVIDUALLY PACKED.
- ④ KITS ARE BULK PACKED.

|             |          |
|-------------|----------|
| ④           | 788072-2 |
| ③           | 788072-1 |
| PART NUMBER |          |

|  |              |                      |           |                                     |                           |
|--|--------------|----------------------|-----------|-------------------------------------|---------------------------|
| THIS DRAWING IS A CONTROLLED DOCUMENT. |              | DWN<br>H. G. LENKER  | 03 OCT 96 | <b>AMP</b>                          | AMP Incorporated          |
| DIMENSIONS:<br>mm (INCHES)             |              | CHK<br>R. STONE      | 14 APR 97 |                                     | Harrisburg, PA 17105-3608 |
| TOLERANCES UNLESS OTHERWISE SPECIFIED: |              | APVD<br>G. D. MILLER | 14 APR 97 | NAME                                |                           |
| 0 PLC                                  | ±            | PRODUCT SPEC         |           | BACKSHELL KIT, UNASSEMBLED,         |                           |
| 1 PLC                                  | ±            | APPLICATION SPEC     |           | SIZE 5, 180° CABLE EXIT, AMPLIMITE™ |                           |
| 2 PLC                                  | +0.13 (.005) | MATERIAL             |           | SIZE                                | CAGE CODE                 |
| 3 PLC                                  | ±            | FINISH               |           | A1                                  | 00779                     |
| 4 PLC                                  | ±            | MATERIAL             |           | WEIGHT                              | DRAWING NO                |
| ANGLES                                 | ±            | MATERIAL             |           | -                                   | C-788072                  |
| FINISH                                 | ±            | MATERIAL             |           | CUSTOMER DRAWING                    | SCALE                     |
|  |              | SHEET                |           | 1                                   | REV                       |
|  |              | SHEET                |           | 1                                   | REV                       |