



3D-CR20179  
Molex Japan Co., Ltd.  
1-5-4 Fukami-Higashi Yamato  
Kanagawa 242-8585  
Tel:+81-46-261-4500 Fax:+81-46-265-2363

Ref No.

February 2, 2012

Attention :

Dear . :

**RE: 0.5 PITCH BOARD TO BOARD CONNECTOR RECEPTACLE TERMINAL WILL BE CHANGED FROM ALL OVER GOLD PLATING TO SELECTIVE GOLD PLATING**

Model Number

- 0.5 PITCH BOARD TO BOARD CONNECTOR RECEPTACLE HOUSING ASSEMBLY  
54150-0878

Content

The plating specification of terminal will be changed as indicated below.

	Before	After
54150-0878	NICKEL UNDER PLATING AND ALL OVER GOLD PLATING	NICKEL UNDER PLATING AND SELECTIVE GOLD PLATING

Reason : To improve the defect of the solder wicking.

Impact on product performance due to change in plating area

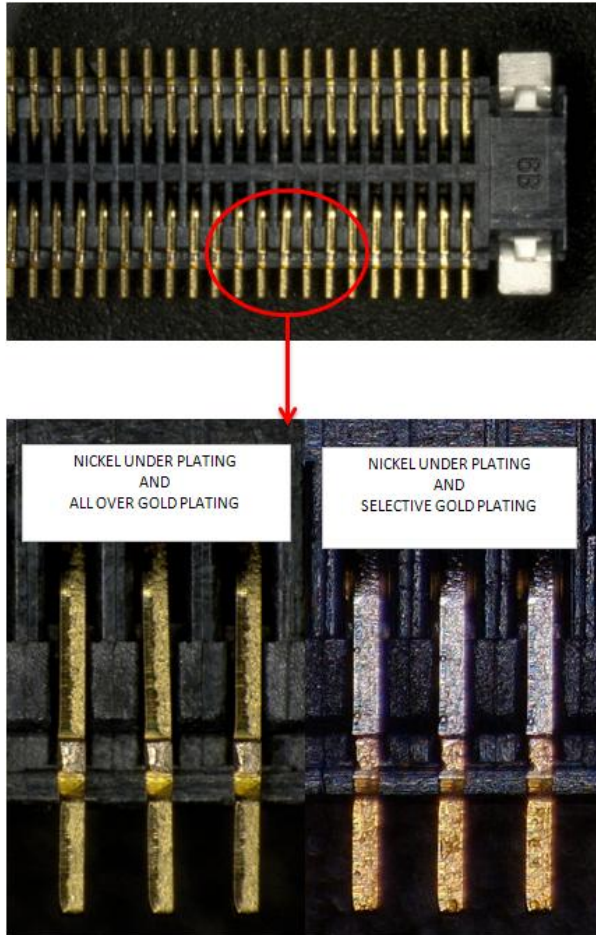
The color of the terminal changes by this change. (Refer to Fig.1)

It does not influence the connector performance.

In addition, there is no change in Sales Drawing.



3D-CR20179  
Molex Japan Co., Ltd.  
1-5-4 Fukami-Higashi Yamato  
Kanagawa 242-8585  
Tel:+81-46-261-4500 Fax:+81-46-265-2363



(Fig.1)

Sincerely,

MASAMI SASAO Engineering 2-1 Director  
TETSUYA ASAKAWA Engineering 2-1 Manager  
DAISUKE NITA Engineering 2-1 Engineer