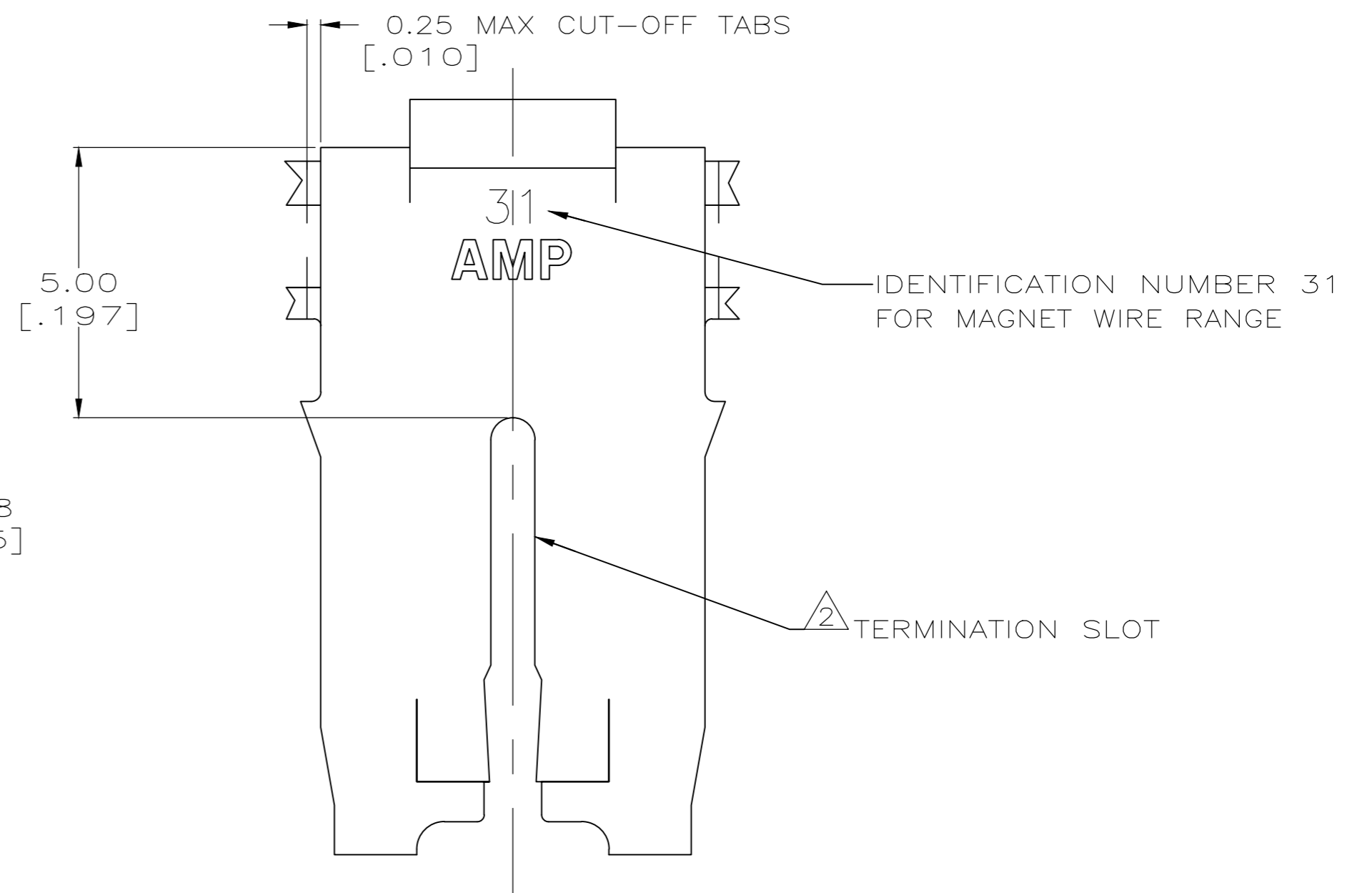
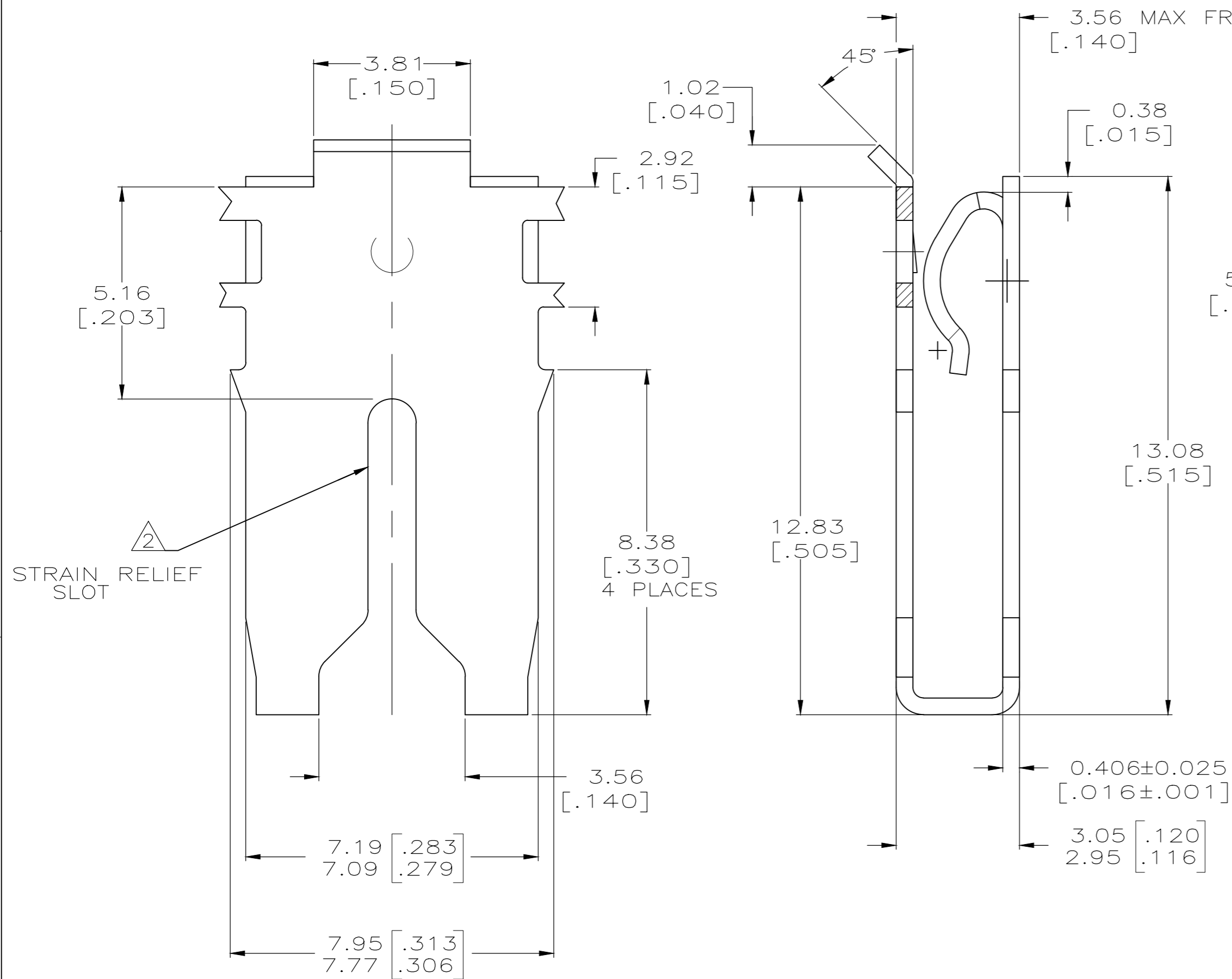
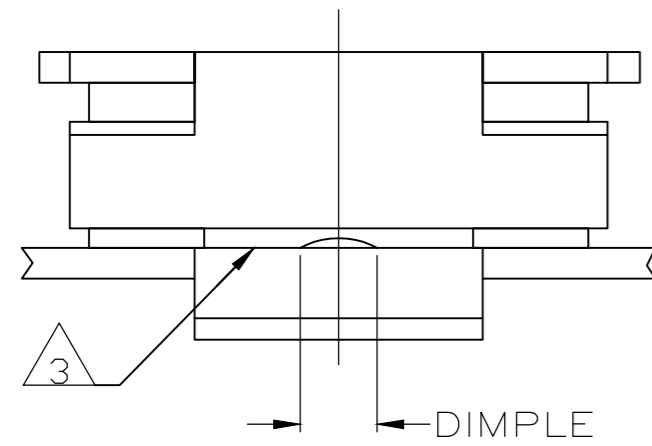


THIS DRAWING IS UNPUBLISHED. RELEASED FOR PUBLICATION
 © COPYRIGHT - TE Connectivity Ltd. ALL RIGHTS RESERVED.

| REVISIONS | | | | |
|-----------|-----|------------------------------|-----------|------|
| P | LTR | DESCRIPTION | DATE | APVD |
| C | | FREE STATE DIMENSION UPDATED | 27JUN2019 | MB |

- 1 CONTINUOUS STRIP ON REELS WITH TERMINALS LOCATED ON 10.41±0.08 [.410±.003] CENTERS.
- 2 SLOT ACCEPTS 1.15-1.29mm [#17-#16] AWG COPPER MAGNET WIRE. 2 WIRES OF THE SAME SIZE AND TYPE MAX PER SLOT.
- 3 CONTACT LEAF ACCEPTS 0.81 [.032] THICK POKE-IN TAB, (REFERENCE TAB DRAWING 1217324).
- 4 0.002032 [.000080] MIN TIN PLATE OVER 0.00127 [.000050] MIN NICKEL UNDERPLATE.



1742203-1
 PART NUMBER

| | | | | |
|--|--|---------------------------|--|--|
| THIS DRAWING IS A CONTROLLED DOCUMENT. | | DWN VJAI 23JAN2018 | STE TE Connectivity | |
| DIMENSIONS: mm | | CHK VJAI 23JAN2018 | | |
| TOLERANCES UNLESS OTHERWISE SPECIFIED: | | APVD SETHIL 23JAN2018 | NAME SPECIAL LEAF CONTACT, 500 SERIES MAG-MATE | |
| 0 PLC ± - | | PRODUCT SPEC 108-2053 | SIZE CAGE CODE DRAWING NO RESTRICTED TO | |
| 1 PLC ± - | | APPLICATION SPEC 114-2066 | A2 00779 C=1742203 | |
| 2 PLC ± 0.25[.010] | | WEIGHT 0.000000 | SCALE 10:1 SHEET 1 OF 1 REV C | |
| 3 PLC ± - | | CUSTOMER DRAWING | | |
| 4 PLC ± - | | | | |
| ANGLES ± - | | | | |
| FINISH - 4 | | | | |