

ITEM	PART#	DESCRIPTION	QTY	UOM
A	522660311	2.5MWATERPROOF PLUG 3CKT 522660311	1	PC
C	501478000	2.5 W.P. CONN CRIMP PIN	3	PC
D	884260070	PAPER PRINTED PAPER WHITE (S100X150YAJ)	1	PC

FROM	TO	DESCRIPTION	COLOR
A1	--	1CX0.5 SQMM DISC PVC BK 1.6MM FLRY-B	BLACK
A2	--	1CX0.5 SQMM DISC PVC BK 1.6MM FLRY-B	BLACK
A3	--	1CX0.5 SQMM DISC PVC BK 1.6MM FLRY-B	BLACK

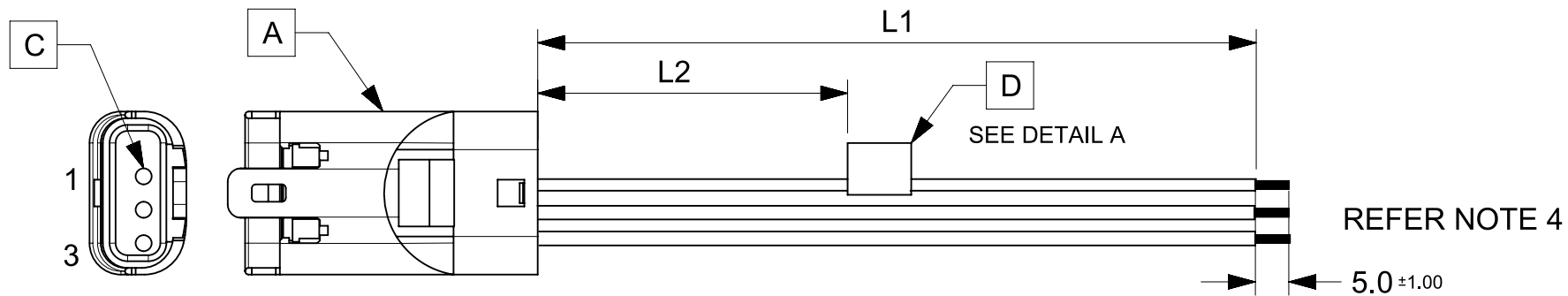


TABLE			
PART NUMBER	L1	L2	TITLE
2153131031	150±8	63 REF	MizuP25 P-S 3ckt 150mm Sn
2153131032	300±10	138 REF	MizuP25 P-S 3ckt 300mm Sn
2153131033	600±10	288 REF	MizuP25 P-S 3ckt 600mm Sn

NOTES

- Connector view shown is from mating side.
- Harness must pass 100% electrical continuity and polarity.
- Connectors must pass the sealing specifications as defined by manufacturer.
- The free ends to be stripped twisted and tinned to the length of 5±1. the tinning dia must be 1.25mm max.
- Label text must be 2mm max. in height with Arial font.
- Label must be wrapped in flag type on a single cable.

MOLEX P/N
MOLEX
BATCH WK/YR
DETAIL A

FUNCTIONAL SYMBOLS FA = 0 FE = 0 FP = 0	THIS DRAWING CONTAINS INFORMATION THAT IS PROPRIETARY TO MOLEX ELECTRONIC TECHNOLOGIES, LLC AND SHOULD NOT BE USED WITHOUT WRITTEN PERMISSION		CURRENT REV DESC:		<p>REFER THE TABLE</p> <p>PRODUCT CUSTOMER DRAWING</p>			
	DIMENSION UNITS	SCALE	GENERAL TOLERANCES (UNLESS SPECIFIED)					
mm	NTS	ANGULAR TOL ± °						
4 PLACES ±		EC NO: 642011						
3 PLACES ±		DRWN: NNANKOLA 2020/07/22						
2 PLACES ±		CHK'D: SD 2020/07/23						
1 PLACE ±		APPR: SD 2020/07/23						
0 PLACES ±		INITIAL REVISION:						
DRAFT WHERE APPLICABLE MUST REMAIN WITHIN DIMENSIONS		THIRD ANGLE PROJECTION	DRAWING	SERIES	DOCUMENT NUMBER	DOC TYPE	DOC PART	REVISION
			A4-SIZE	215313	2153131031	PSD	000	A
					REFER THE TABLE	GENERAL MARKET		1 OF 1