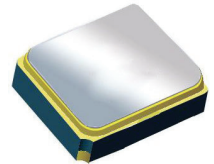


Surface Mount 1588.66 MHz SAW Filter



1.4 x 1.1 x 0.7 mm

AFS14A34-1588.66-T3

Moisture Sensitivity Level (MSL) = 3



**RoHS
Compliant**

FEATURES:

- 1.4 x 1.1 x 0.7 mm low profile SMT package
- Low Insertion loss
- Excellent selectivity with high out-of-band rejection

APPLICATIONS:

- Wireless Communication
- Remote Control
- Cellular Phones

ELECTRICAL SPECIFICATIONS:

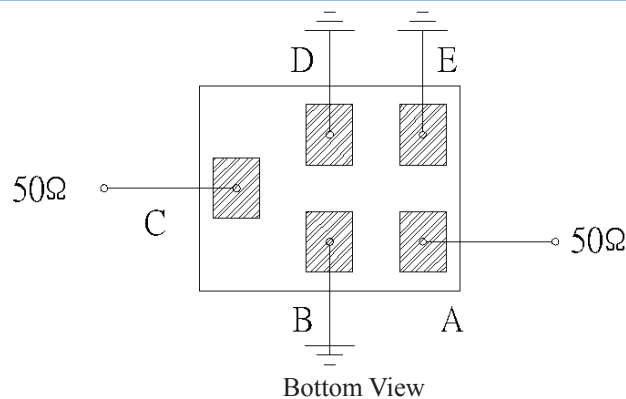
Maximum Ratings

| Item | Value |
|-----------------------------|-----------------|
| Input Power Level | +10 dBm max. |
| DC Permissive Voltage | 3.0V DC max. |
| Operating Temperature Range | -30°C to + 85°C |
| Storage Temperature Range | -40°C to + 85°C |

| Parameters | Minimum | Typical | Maximum | Units | Notes |
|---|---------|---------|---------------|----------|---------------------|
| Center Frequency (f_c) | | 1588.66 | | MHz | |
| Insertion Loss (IL) | | 1.25 | 1.70 | dB | 1573.42~1577.42 MHz |
| Insertion Loss (IL) | | 1.7 | 2.5 | dB | 1571.42~1605.89 MHz |
| Effective Bandwidth | | 34 | | MHz | |
| Amplitude Ripple | | 0.25 | 0.8 | dB | 1573.42~1577.42 MHz |
| Amplitude Ripple | | 0.7 | 1.5 | dB | 1571.42~1605.89 MHz |
| Worst-Case Input / Output Return Loss | 9.54 | 20.8 | | dB | 1573.42~1577.42 MHz |
| Worst-Case Input / Output Return Loss | 12.7 | 20.8 | | dB | 1571.42~1605.89 MHz |
| Stop-band Attenuation (Referenced to 0.0 dB) | 32 | 35 | | dB | D.C~824 MHz |
| | 32 | 35 | | | 824~849 MHz |
| | 32 | 34.5 | | | 849~880 MHz |
| | 32 | 34.5 | | | 880~915 MHz |
| | 30 | 34 | | | 915~1452 MHz |
| | 32 | 37 | | | 1452~1525 MHz |
| | 32 | 36 | | | 1710~1785 MHz |
| | 32 | 36 | | | 1785~1850 MHz |
| 25 | 36 | | 1850~6000 MHz | | |
| Temperature Coefficient of frequency | | -36 | | ppm/°C | |
| Source Impedance (Z_S) | | 50 | | Ω | See note # 1 |
| Load Impedance (Z_L) | | 50 | | Ω | See note # 1 |

Note #1: No matching network required for operation into 50 Ω 's

TEST CIRCUIT:

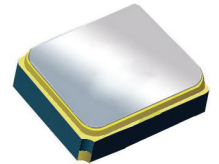


Surface Mount 1588.66 MHz SAW Filter

AFS14A34-1588.66-T3

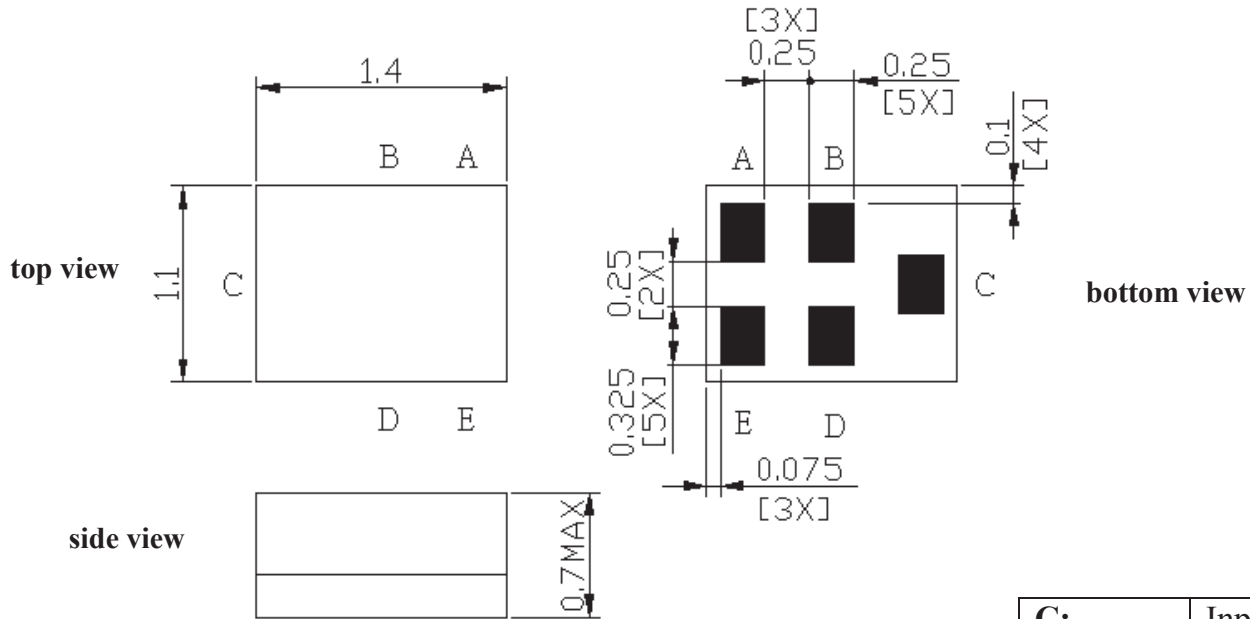


RoHS
Compliant



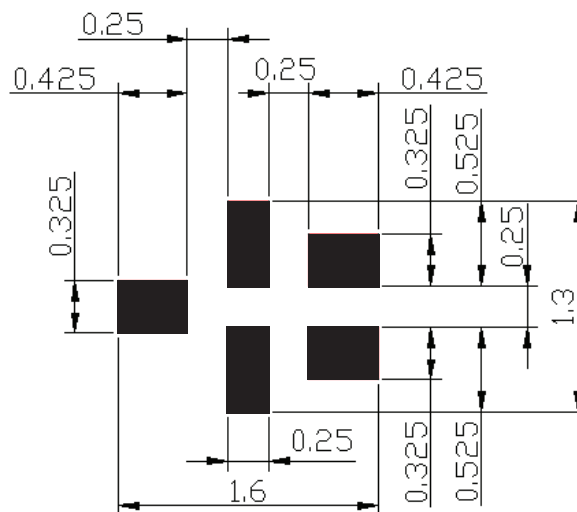
1.4 x 1.1 x 0.7 mm

OUTLINE DIMENSIONS:



| | |
|-----------------|--------|
| C: | Input |
| A: | Output |
| B, D, E: | Ground |

Recommended Land Pattern:



■ : Land Pattern
Unit : mm

*All Dimensions are in mm

Surface Mount 1588.66 MHz SAW Filter

AFS14A34-1588.66-T3



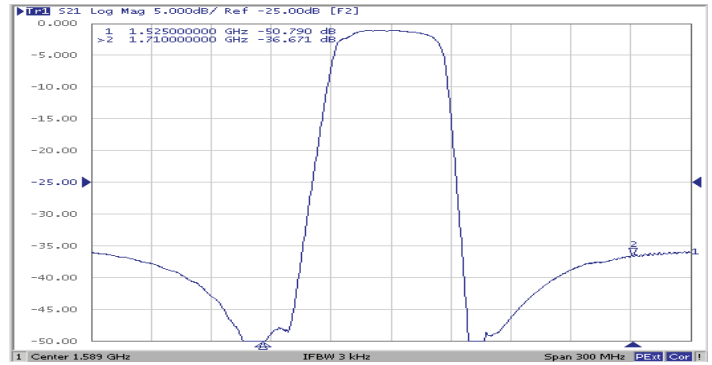
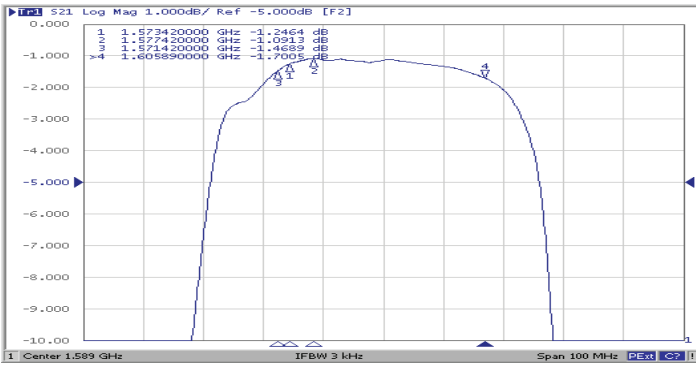
RoHS
Compliant



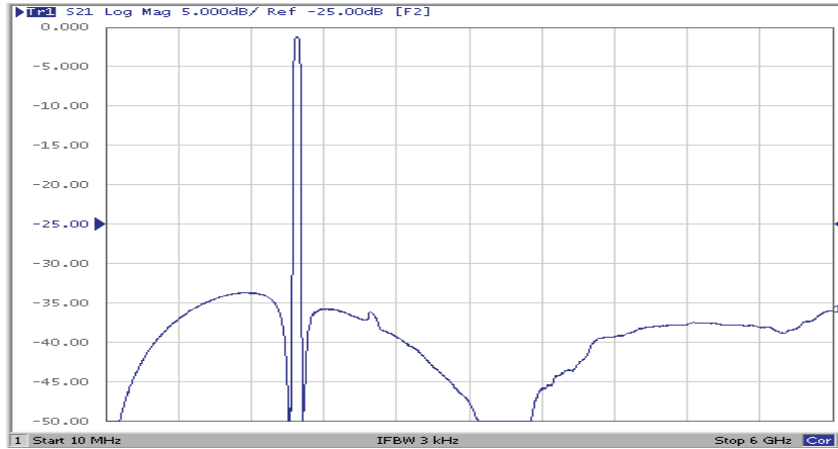
1.4 x 1.1 x 0.7 mm

FREQUENCY CHARACTERISTICS:

Filter Frequency Response (Narrowband)

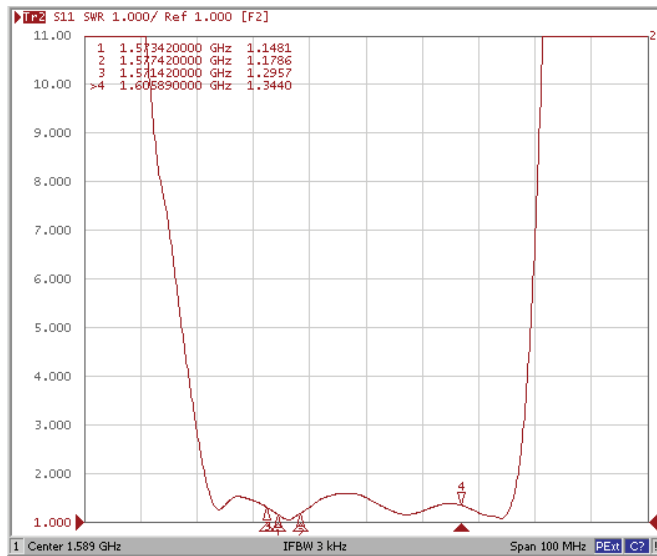


Filter Frequency Response (Wideband)

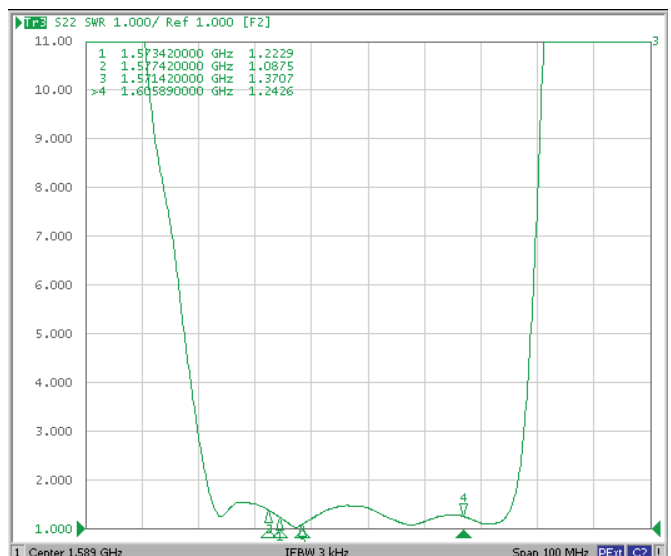


REFLECTION FUNCTIONS:

S11



S22

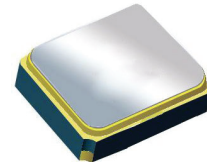


Surface Mount 1588.66 MHz SAW Filter

AFS14A34-1588.66-T3

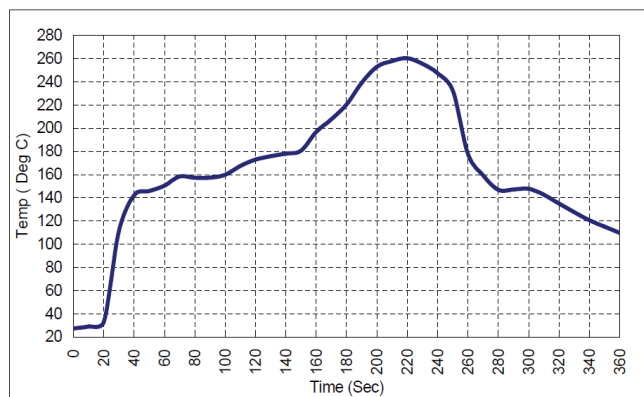


RoHS
Compliant



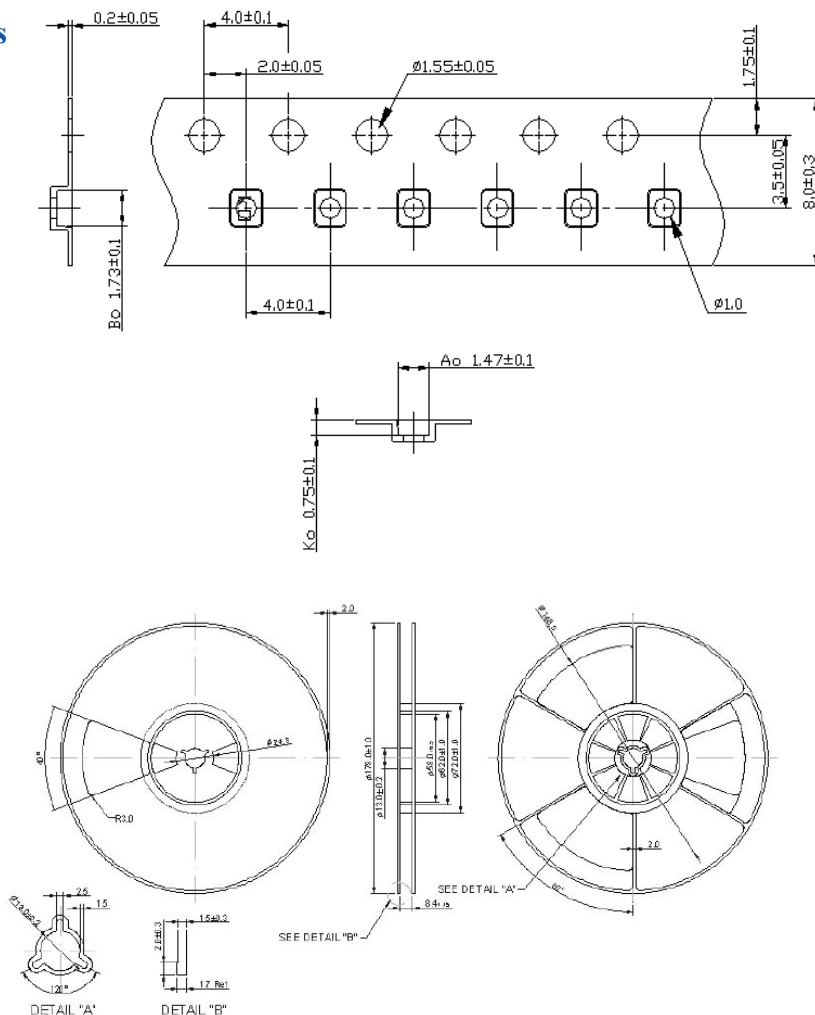
1.4 x 1.1 x 0.7 mm

REFLOW PROFILE:



PACKAGING: 3000 Units/Reel “-T2” parts (2k/reel) are no longer available effective 01/01/2013

Reel Count : 7" = 3k units



Dimensions: mm

ATTENTION: Abracon LLC's products are COTS – Commercial-Off-The-Shelf products; suitable for Commercial, Industrial and, where designated, Automotive Applications. Abracon's products are not specifically designed for Military, Aviation, Aerospace, Life-dependent Medical applications or any application requiring high reliability where component failure could result in loss of life and/or property. For applications requiring high reliability and/or presenting an extreme operating environment, written consent and authorization from Abracon LLC is required. Please contact Abracon LLC for more information.