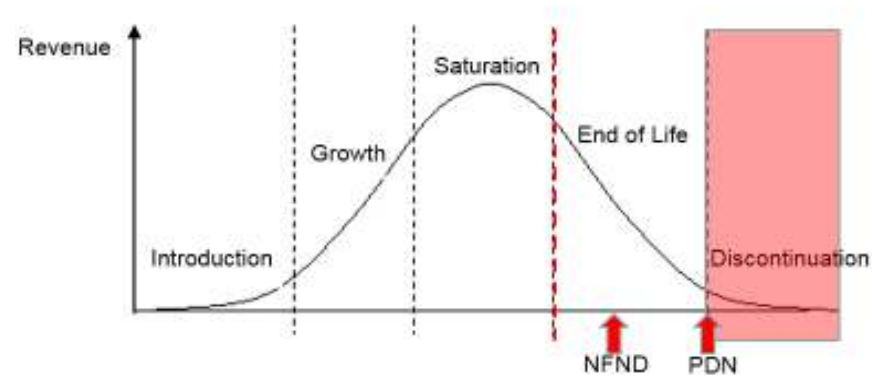


Light is OSRAM

Product Discontinuation (acc. JEDEC J-STD-048) OS-PD-2018-084

01-Nov-2018

Last order:	01-May-2019
Last delivery:	01-Nov-2019
Reason:	Product performance improvement



Please direct your feedback to your local Sales office.

DISCONTINUED				NEW (REPLACEMENT)			
Device	Ordering Code	Function	Brand	Device	Datasheet Ordering Code	Function	Brand
GW PSLR31.CM							
GW PSLR31.CM-KULQ-A535-1	Q65112A5161	LED	DURIS S 5	GW PSLR31.CM-LPLR-A535-1	Q65112A3319	LED	DURIS S 5
GW PSLR31.CM-KULQ-XX55-1	Q65112A5162	LED	DURIS S 5	GW PSLR31.CM-LPLR-XX55-1	Q65112A3318	LED	DURIS S 5

Products Affected by Product Discontinuation Notification

Number: OS-PD-2018-084

Name: Discontinuation due to Product Performance Improvement

Release Date: 11/1/2018

Last Order: 5/1/2019

Last Delivery: 11/1/2019

DISCONTINUED

NEW (REPLACEMENT)

<i>Product</i>	<i>QNumber</i>	<i>QNumber Description</i>	<i>Part Number</i>	<i>Product</i>	<i>QNumber</i>	<i>QNumber Description</i>	<i>Part Number</i>
GW PSLR31.	Q65112A5161	GW PSLR31.CM-KULQ-A535-1		GW PSLR31.	Q65112A3319	GW PSLR31.CM-LPLR-A535-1	
GW PSLR31.	Q65112A5162	GW PSLR31.CM-KULQ-XX55-1		GW PSLR31.	Q65112A3318	GW PSLR31.CM-LPLR-XX55-1	