

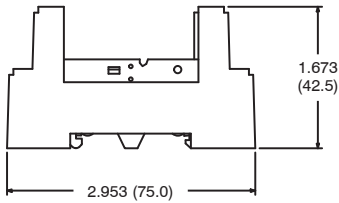
## R95-130

### Features

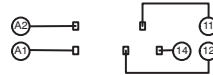
- DIN Rail Mount
- Finger Safe
- SPDT Applications

### Electrical Rating:

300 Volts, 12 Amps

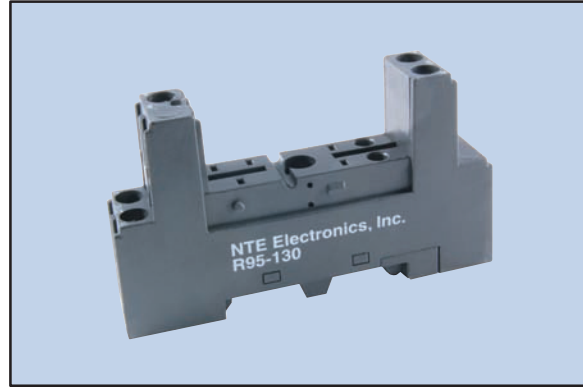


Terminal Location



Top View

## 5-Pin Slim Line Socket



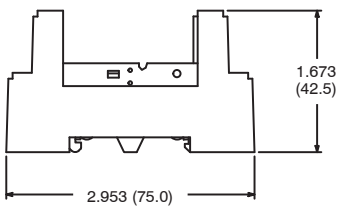
## R95-131

### Features

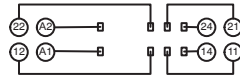
- DIN Rail Mount
- Finger Safe
- DPDT Applications

### Electrical Rating:

300 Volts, 12 Amps



Terminal Location



Top View

## 8-Pin Slim Line Socket

