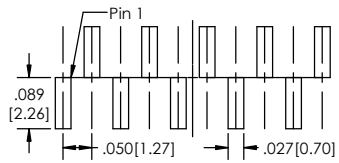
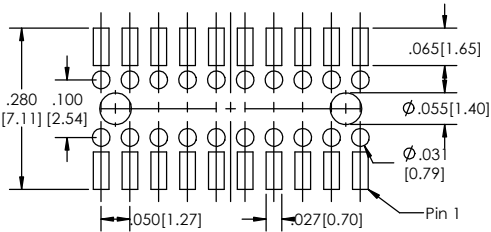
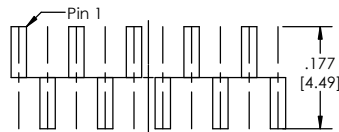


Recommended P.C. Board Layout
SCALE 8:1

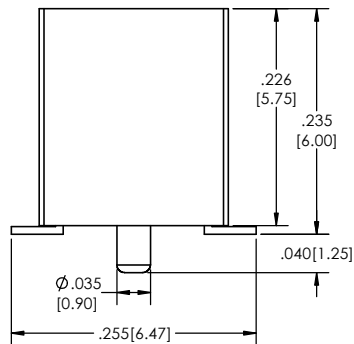
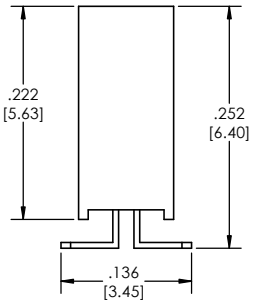
Single (S)



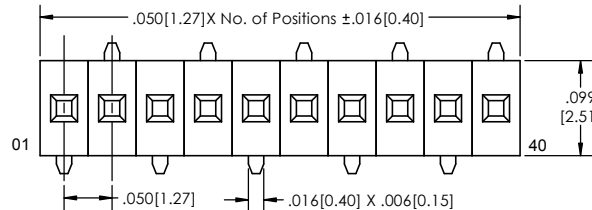
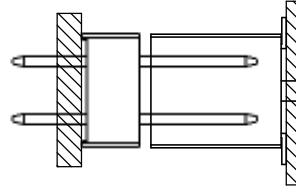
Single (M)



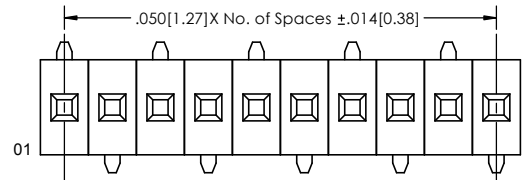
Double



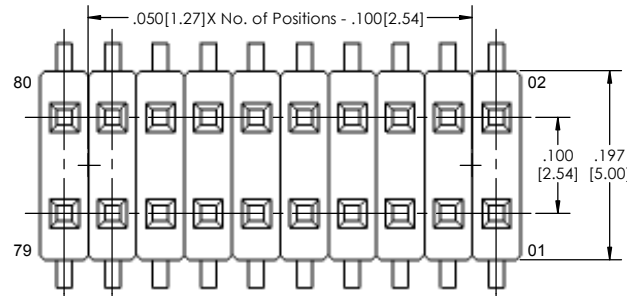
APPLICATION



Single (S)

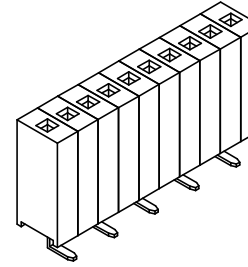


Single (M)

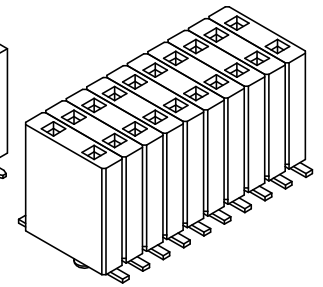
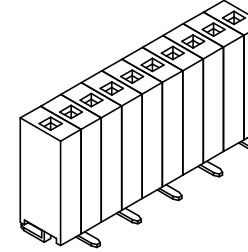


Double

Single (S)



Single (M)



SMSS-6 (A) (B) (C) (D) (E) (F) (G) (H) (I) (J)

- A. Pins Per Row
 - 1 through 40
- B. Row Specification
 - S= Single Row
 - D= Double Row
- C. Surface Mount
 - See Plating Options below
- D. Plating Options
 - See Plating Options below
- E. Vertical
- F. Polarized Position
 - Leave blank if not needed
 - If required, specify empty pin position
 - e.g. 012 for Pin 12
- G. Packing Information
 - TR= Tape and Reel
 - TB= Tube
- H. Pad
 - P= Plastic
 - K= Kapton
 - O= No Pad
 - If left blank, packaging at MLE's discretion
 - Pad may be metal, mylar or plastic
- I. Alignment Pin
 - Leave blank if not needed
 - AP= With
- J. Lead Free

Mates with:
TSHS
TSHC
TSHR
TSHSM
BSTS
BSTC
BSTCM

Plating options	
G	-10µ Gold on Contact Area/ Flash on Tail
T	-Matte Tin all Over
GT	-10µ Gold on Contact Area/ Matte Tin on Tail
H	-30µ Gold on Contact Area/ Matte Tin on Tail
F	-Gold Flash over Entire Pin
FT	- Gold Flash on Contact Area/ Matte Tin on Tail

Specifications:
 Insertion Depth: .104[2.64] to .230[5.84]
 Insertion Force- Per Contact- H Plating:
 3.5oz. [0.97N] avg. with .018[0.46] Sq. pin
 Withdrawal Force- Par Contact- H Plating:
 1.5oz. [0.97N] avg. with .018[0.46] Sq. pin
 Current Rating: 1.0 Ampere
 Insulation Resistance: 1000M Ohms Min.
 Dielectric Withstanding: 300V AC
 Contact Resistance: 20M Ohms Max.
 Operation Temperature: -40°C to +105°C
 Max. Process Temperature
 Peak: 260°C up to 10 secs.
 Process: 230°C up to 60 secs.
 Wave: 260°C up to 6 secs.
 Manual Solder: 350°C up to 5 secs.

Materials:
 Contact Material: Phosphor Bronze
 Insulator Material: Nylon 6T
 Plating: Au or Sn over 50µ" (1.27) Ni

Tails may be clipped to achieve specific dimensions.
 Products cut to specific sizes are uncancelable/ nonreturnable.
 Parts are subject to change without notice.

UNLESS OTHERWISE SPECIFIED:		NAME		DATE	
DIMENSIONS ARE IN INCHES		DRAWN	EOW	01/21/15	
TOLERANCES:		CHECKED	GWE	01/21/15	
ONE DECIMALS ±.100		ENG APPR.			
TWO DECIMAL ±.100		MFG APPR.			
THREE DECIMAL ±.005		ADDRESS:			
FOUR DECIMAL ±.002		2533 Centennial Blvd.			
NEXT ASSY USED ON		Jeffersonville, IN 47130			
APPLICATION		Phone: 812-670-4174			
DO NOT SCALE DRAWING		Fax: 812-670-4175			
FINISH		E-Mail: mle@mlerlectronics.com			
INTERPRET GEOMETRIC TOLERANCING PER:		TITLE: SMSS-6 SERIES		SIZE DWG. NO.	
MATERIAL		C		REV D	
SCALE 10:1		SHEET 1 OF 1			



PROPRIETARY AND CONFIDENTIAL
 THE INFORMATION CONTAINED IN THIS DRAWING IS THE SOLE PROPERTY OF Major League Electronics. ANY REPRODUCTION IN PART OR AS A WHOLE WITHOUT THE WRITTEN PERMISSION OF Major League Electronics IS PROHIBITED.