

ITEM	PART#	DESCRIPTION	QTY	UOM
A	2077820003	3ckt Receptacle assembly for Squba 3.6	1	PC
B	2077770001	Squba 3.6 female terminal 16 AWG	3	PC
C	--	PAPER PRINTED PAPER WHITE	1	PC

FROM	TO	DESCRIPTION	COLOR
A1	--	1X16AWG DISC MPPE BK UL11028 HOOKUP	BLACK
A2	--	1X16AWG DISC MPPE BK UL11028 HOOKUP	BLACK
A3	--	1X16AWG DISC MPPE BK UL11028 HOOKUP	BLACK

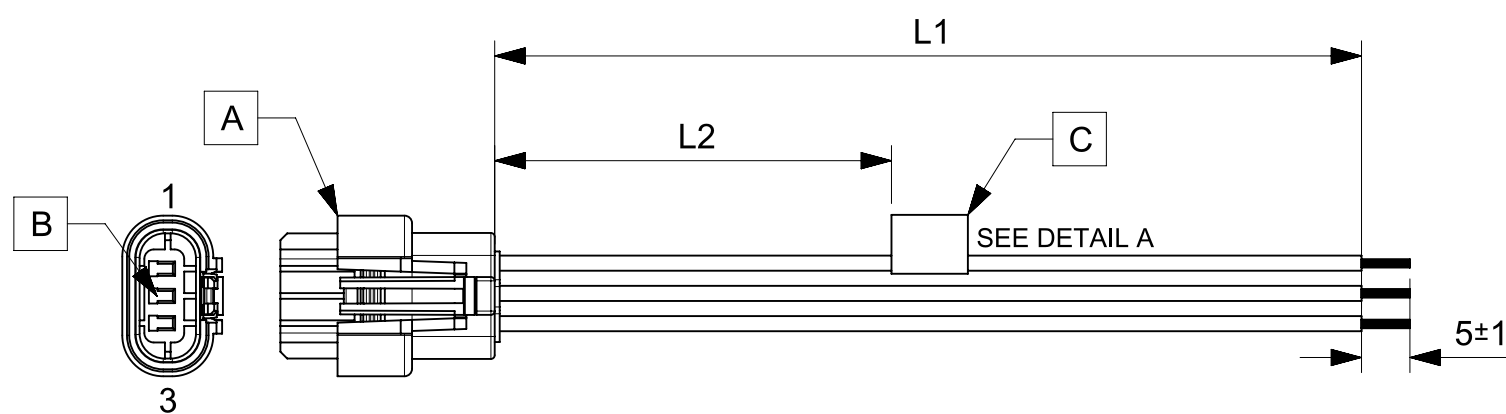


TABLE			
PART NUMBER	L1	L2	TITLE
2166211031	150±8	63 REF	SQUBA3.6 R-S 3CKT 150MM Sn
2166211032	300±10	138 REF	SQUBA3.6 R-S 3CKT 300MM Sn
2166211033	600±10	288 REF	SQUBA3.6 R-S 3CKT 600MM Sn

**NOTES**

1. Connector view shown is from mating side.
2. Leak test must be ensured for sealed connector.
3. Free ends must be stripped, twisted & tinned. The length of tinning is 5±1mm. Tinning dia must be 1.9mm Max.
4. Label text must be 2mm max. in height with Arial font.
5. Label must be wrapped in Flag type on a single cable.

MOLEX P/N  
MOLEX  
BATCH WK/YR

DETAIL A

REVISION			
DATE	REV	DESCRIPTION	CHANGER
2020/06/23	A	INITIAL RELEASE	ARAJU
2020/07/16	A1	TINNING DIA UPDATED	ARAJU

FUNCTIONAL SYMBOLS FA = 0 FE = 0 FP = 0	THIS DRAWING CONTAINS INFORMATION THAT IS PROPRIETARY TO MOLEX ELECTRONIC TECHNOLOGIES, LLC AND SHOULD NOT BE USED WITHOUT WRITTEN PERMISSION		CURRENT REV DESC:	
	DIMENSION UNITS	SCALE	EC NO: 641908	
	mm	NTS	DRWN: ARAJU 2020/07/16	
	GENERAL TOLERANCES (UNLESS SPECIFIED)		CHK'D: RDESAI01 2020/07/21	
ANGULAR TOL ± °		APPR: RDESAI01 2020/07/21		
4 PLACES ±		INITIAL REVISION:		
3 PLACES ±		DRWN: ARAJU 2020/06/23		
2 PLACES ±		APPR: RDESAI01 2020/07/08		
1 PLACE ±		DOCUMENT NUMBER		
0 PLACES ±		2166211031		
DRAFT WHERE APPLICABLE MUST REMAIN WITHIN DIMENSIONS		THIRD ANGLE PROJECTION	DRAWING	SERIES
			A4-SIZE	216621
		MATERIAL NUMBER		CUSTOMER
		SEE TABLE		GENERAL MARKET
		DOC TYPE		DOC PART
		PSD		000
		REVISION		A1
		SHEET NUMBER		1 OF 1

RELEASE STATUS	P1	RELEASE DATE	2020/07/21	05:32:28
----------------	----	--------------	------------	----------