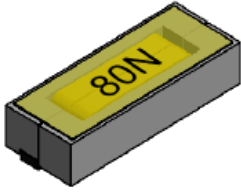


BPED Series



Low profile high Bs sintered alloy material core design obtain high saturation current. No thermal aging and good weather resistance that meet the datacenter requirements.

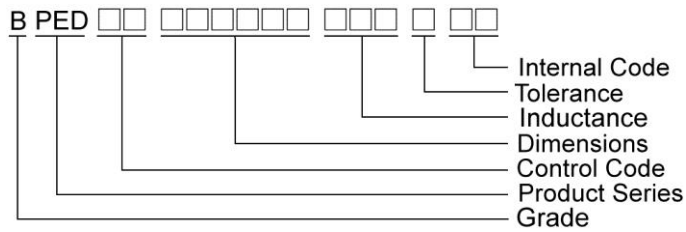
Features

- RoHS, Halogen Free and REACH Compliance
- Low profile
- No thermal aging
- High current saturation no temperature dependency

Applications

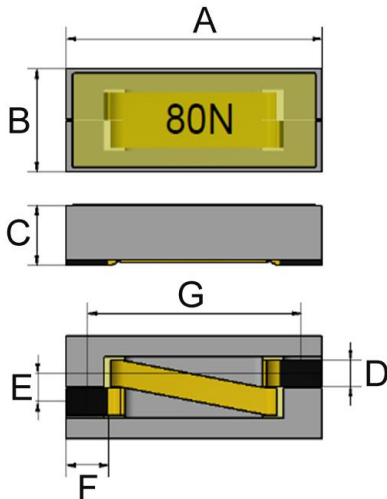
- Data center V-core
- Server V-core
- FPGA, VGA GPU V-core

Product Identification

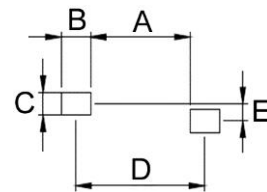


Shape and Dimensions

BPED00100424



Recommended Pattern



Dimensions in mm

TYPE	Shape and Dimensions							Recommended Pattern				
	A	B	C	D	E	F	G	A	B	C	D	E
BPED00100424	10±0.2	3.8±0.2	2.4Max	1.0	1.05	1.65	8.35	6.45	1.9	1.4	8.35	1.05

SMD Shielded Power Inductors – BPED Series

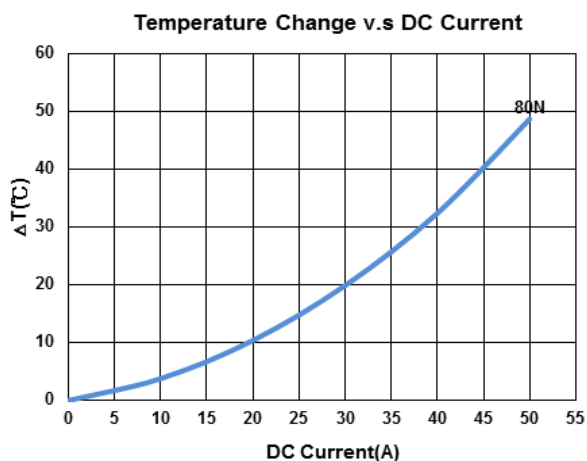
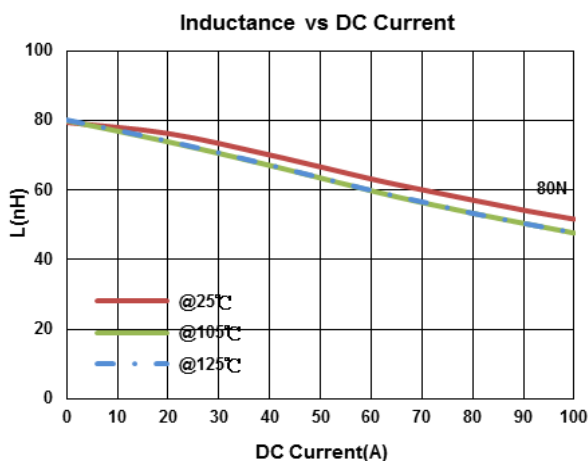
Standard Specifications

Part Number	Inductance (nH)	Tolerance (±%)	Test Frequency (kHz)	RDC (mΩ)±10%	(A)Typ		Irms (A)Typ	Marking
					Isat 1	Isat 2		
BPED0010042480N□2E	80	10,15,20	100	1.1	80	80	33	80N

Note: When ordering, please specify tolerance code. Tolerance: K=±10% , L=±15% , M=±20%

- Operating temperature range - 40°C ~ 155°C(Including self - temperature rise)
- Isat 1 : Based on inductance change ($\Delta L/L_0$: drop 30% Typ) @ ambient temp. 25°C
- Isat 2 : Based on inductance change ($\Delta L/L_0$: drop 30% Typ) @ ambient temp. 125°C
- I rms : Based on temperature rise (ΔT : 40°C Typ)
- Rated DC Current : The less value which is Isat 1 or I rms

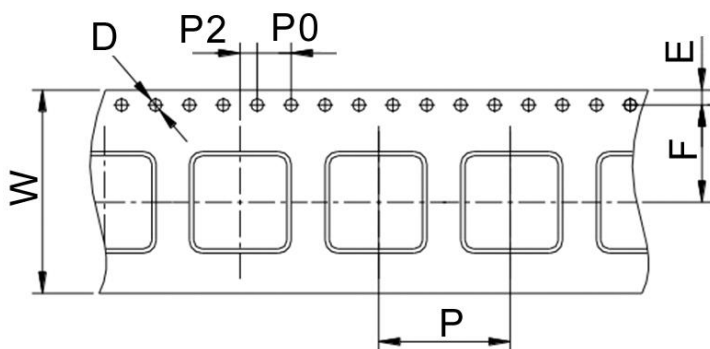
Test Instruments :



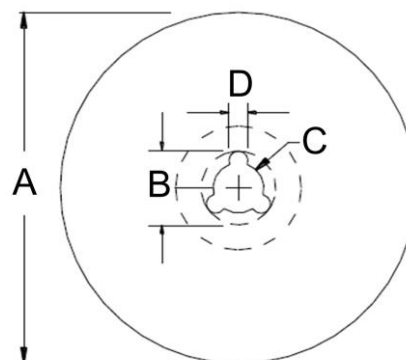
SMD Shielded Power Inductors – BPED Series

Packaging Specifications

Tape Dimensions



Reel Dimensions



Dimensions in mm

TYPE	Tape Dimensions							Reel Dimensions				Quantity PCS / Reel
	W	D	E	F	P	P0	P2	A	B	C	D	
BPED00100424	24	1.5	1.75	11.5	12	4	2	330	20	13	2	1000