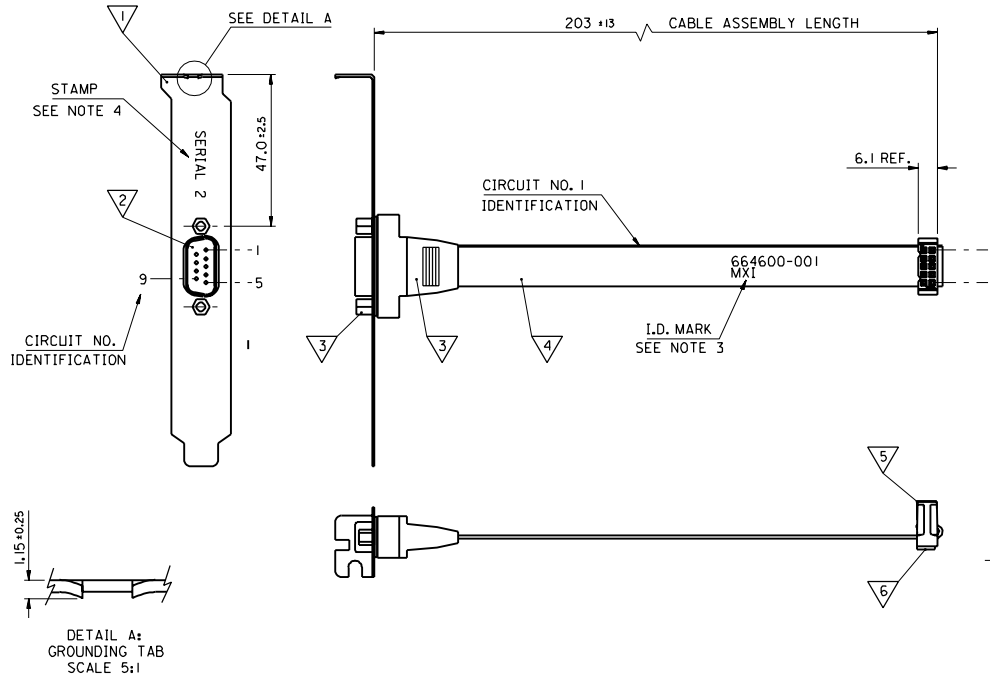


BILL OF MATERIALS

NO.	QTY	SUPPLIER	DESCRIPTION	PART No.	SEE NOTE
1	1	CARRAIGBUI ENG.	PC FILLER PANEL	CB9	2,4,5
2	1	STARCONN	9 POS MALE D SUB	DS-09P	2,5
3	1	STARCONN	9 POS. D SUB STRAIN RELIEF/ 2 JACKSCREWS KIT	00B0-109-000IH	2,5
4		NO PREFERRED SUPPLIER	9 CCT RIBBON CABLE 28 AWG		1,3
5	1	MOLEX	0F50 10 CCT CONNECTOR (CCT 10 VOIDED)	90635-9016	1
6	1	MOLEX	STRAIN RELIEF FOR OF CONNECTOR	90170-0010	1

WIRING DIAGRAM : 9 CORE CABLE

2		4		5	
9 POS MALE D-SUB CONN.		9 CORE RIBBON CABLE		10 POS. OF 50 CONNECTOR	
CIRCUIT No.	CONDUCTOR No.	CIRCUIT No.	CONDUCTOR No.	CIRCUIT No.	CONDUCTOR No.
1	1	1	1	1	1
6	2	2	2	2	2
2	3	3	3	3	3
7	4	4	4	4	4
3	5	5	5	5	5
8	6	6	6	6	6
4	7	7	7	7	7
9	8	8	8	8	8
5	9	9	9	9	9



NOTES:

- SEE PRODUCT SPECIFICATION PS-99020-0015.
- SUPPLIER OR CUSTOMER APPROVED EQUIVALENT.
- PRINT INTEL P/N '664600-001' AND MOLEX IDENTIFICATION MARK 'MXI' APPROXIMATELY WHERE SHOWN, TEXT HEIGHT 2.5 MIN.
- FILLER PANEL TO BE STAMPED WITH 'SERIAL 2' APPROXIMATELY WHERE SHOWN, TEXT HEIGHT 2.5 MIN.
- ONLY AVAILABLE FROM MOLEX AS PART OF A CABLE ASSEMBLY.
- HARNESS TO BE 100% ELECTRICALLY TESTED.
- PARTS TO BE PACKED IN BOXES. ALL BOXES TO HAVE UL LABEL.

ORIGINAL ISSUE ECN E70545 97.05.15 MK	DIMENSIONS SHOWN (METRIC) INCH UNLESS OTHERWISE SPECIFIED TOLERANCES ANGULAR ±° INCH (METRIC) 3 PLACE # ± # 2 PLACE # ± # 1 PLACE # ± # DIMENSIONS IN PARENTHESES MUST REMAIN WITHIN DIMENSIONS	DRWG BY MK	REVISIONS
A	DESIGN DIMENSION (PRIMARY) <input type="checkbox"/> IN. <input type="checkbox"/> (MM) EQUIVALENT DIMENSION (SECONDARY) <input type="checkbox"/> IN. <input type="checkbox"/> (MM)	DRWG'D BY BY APP'D BY SCALE 1:1	

REVISE ONLY ON CAD SYSTEM		SHL	REV.
CAD/CAM FILENAME 923071 DCN	THIS DRAWING CONTAINS INFORMATION THAT IS PROPRIETARY TO MOLEX INC. & SHOULD NOT BE USED WITHOUT WRITTEN PERMISSION		
TITLE CA SERIAL 2 CABLE ASSEMBLY			
MOLEX	MOLEX EUROPE	SHEET NO. DATE 10F 1 97/02/11	SIZE C
PART NO. 92307-0001	DWG NO. SDA-92307-0001		

PART NO. 92307-0001
DWG NO. SDA-92307-0001