

Variable Attenuators

2-12.4 GHz

Broadband Variable Attenuator

- Smooth, Continuous Operation Over Full Range
- High Attenuation Over a Broad Frequency Range
- Small Size, Lightweight



Specifications

Type N, 2 to 12.4 GHz

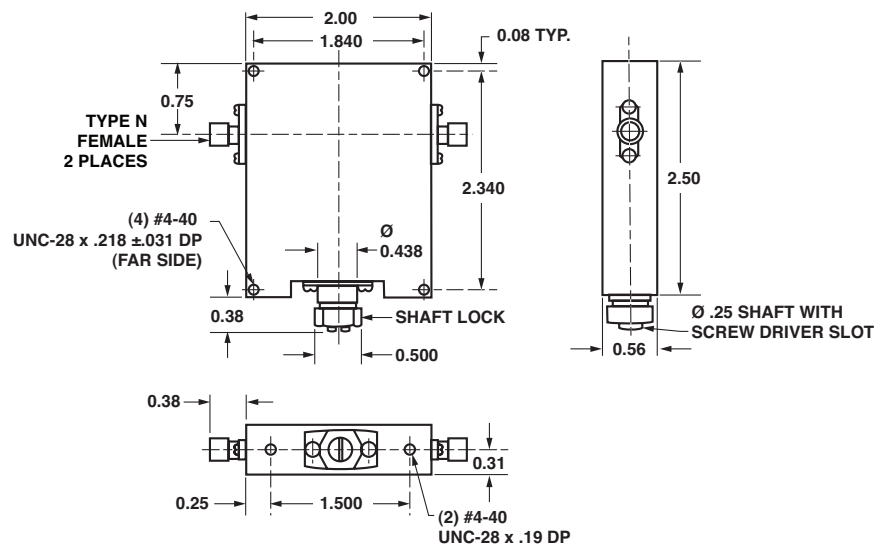
FREQUENCY RANGE (GHz)	MODEL	ATTENUATION (dB)	POWER INPUT		VSWR (max.)		INSERTION LOSS (dB max.)	FREQUENCY SENSITIVITY* (dB)	WEIGHT (max)	
			AVERAGE (W max.)	PEAK (kW max.)	2-11	11-12.4			oz.	gr.
2-12.4	787FF	20	5	3	1.5	1.7	1.0	—	6.1	170

* Due to the sensitivity of existing dielectric properties, this model does not exhibit flat frequency sensitivity.

NOTES:

- Connectors are Type N stainless steel.
- All units are supplied with female input and output connectors.
- Type N male connector(s) available on a custom order basis.

Outline Drawing



Dimensions in inches, unless otherwise specified.

