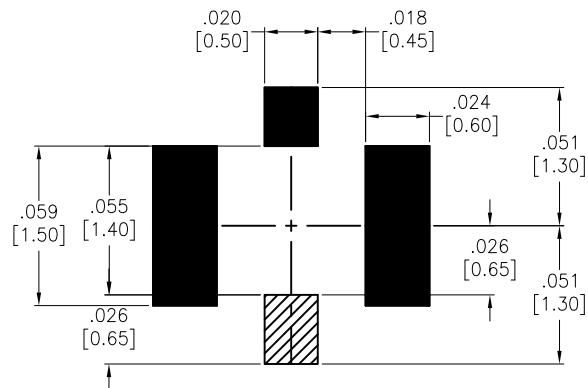
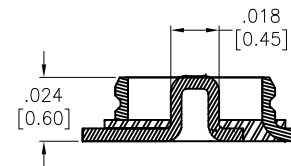
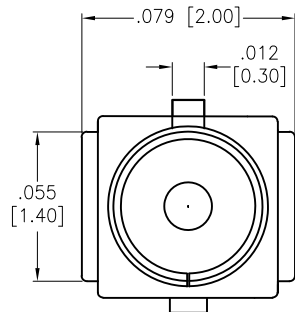


APPROVED: \_\_\_\_\_  
 DATE: \_\_\_\_\_ TITLE: \_\_\_\_\_

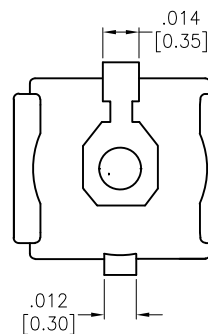
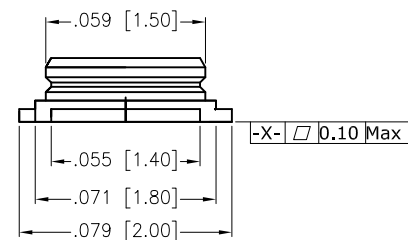
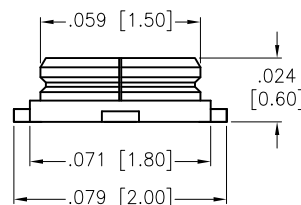
Rev	AWO #	Description	Date	Appr
-		RELEASED	9/5/19	



■ GROUND PAD  
 RECOMMENDED PCB LAYOUT



SECTION A-A



METAL SHELL	COPPER ALLOY	GOLD
CENTER PIN	COPPER ALLOY	1~2u" GOLD
HOUSING	LCP, BLACK, UL94V-0	
DESCRIPTION	MATERIAL	FINISH

SPECIFICATIONS:

Electrical:  
 Frequency range: DC~6 GHz  
 Impedance: 50 Ohms  
 Voltage: 60 VAC  
 VSWR: 1.3 max @ 0.1~3.0 GHz  
 1.4 max @ 3.0~6.0 GHz  
 Temperature Rating:  
 Operating temperature: -40°C to +80°C  
 Environmental:  
 Lead free, RoHS compliant.



PACKAGED ON TAPE & REEL

UNLESS OTHERWISE SPECIFIED ALL DIMENSIONS ARE INCHES [MM] TOLERANCES: EXCEPT AS NOTED		
INCHES		HOLES
.X ± .10	Ø.X ± .10	
.XX ± .020	Ø.XX ± .015	
.XXX ± .015	Ø.XXX ± .010	
APPROVALS		DATE
DRAWN	OW	9/5/19
CHECKED	RC	9/5/19
APPROVED		

**ADAM TECH INTERCONNECTS**  
 909 Rahway Avenue,  
 Union, NJ 07083  
 Phone: 908-687-5000  
 Fax: 908-687-5710

TITLE RF CONNECTOR, TYPE MHF, 50 OHMS VERTICAL, TAPE & REEL		
SIZE X	PART NO. RF20-10A-L-00-50-G-T/R	REV. -
REF: S00291T	SCALE: NTS	SHEET 1 OF 1

6 5 4 3 2 1

6 5 4 3 2 1