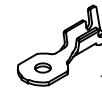


8,25	0988611279	8,600
6,25	0988611179	8,800
∅ TH13 (+0.220)	P/N	WEIGHT (g)

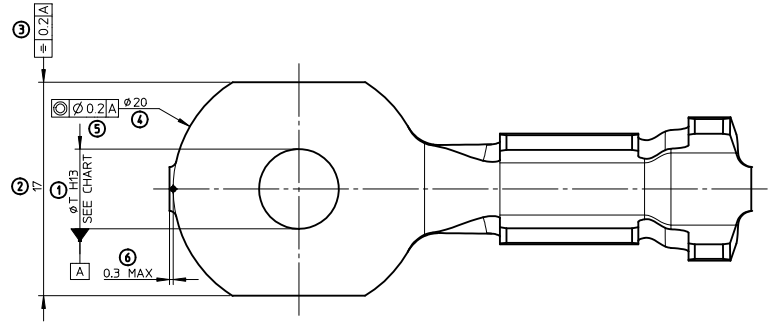
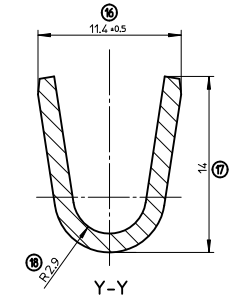
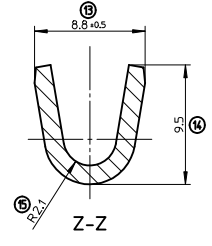
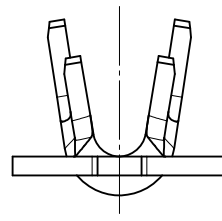
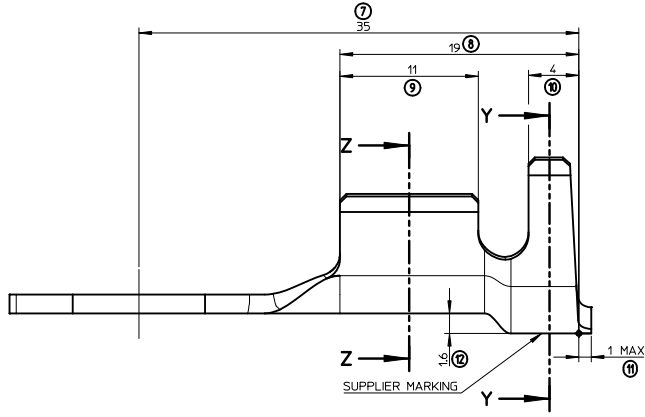
NOTES:

- 1 - MATERIAL : BRASS THICKNESS 15 MM (6)
- 2 - PLATING : POST-TIN PLATED
- 3 - PART WEIGHT : SEE CHART
- 4 - CRIMPING RANGE (MM2) : 7 TO 13
- 5 - PACKAGING : PARTS DELIVERED ON LOOSE



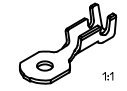
INSPECTION BALLOON NUMBER LOG	
PER DRAWING REVISION: A	
LAST BALLOON NUMBER USED: 19	
ADDED BALLOON NUMBERS: NONE	
REMOVED BALLOON NUMBERS: NONE	

FIRST RELEASE EC NO: G2012-0985 DRW: PBOSQUAIN 2012/04/19 CHKD: TDATAZOUT 2012/04/19 APPR: OPLESSIS 2012/05/11	QUALITY SYMBOLS ▽-O ▽-V ▽-P	DESCRIPTION	GENERAL TOLERANCES (UNLESS SPECIFIED)		DIMENSION STYLE		SCALE	DESIGN UNITS	FIRST ANGLE PROJECTION	
			mm	INCH	MM ONLY		5:1	METRIC		
A	REV	DESCRIPTION	4 PLACES	±	---	±	---	DRAWN BY	DATE	TITLE
			3 PLACES	±	---	±	---	PBOSQUAIN	2012/04/19	RING TERMINAL
			2 PLACES	±	---	±	---	CHECKED BY	DATE	6.25 AND 8.25X17X1.5
			1 PLACE	±	0.3	±	---	TDATAZOUT	2012/04/19	7-13
			0 PLACE	±	0.3	±	---	APPROVED BY	DATE	molex
			ANGULAR ±		---	---	OPLESSIS	2012/05/03		DOCUMENT NO.
			DRAFT WHERE APPLICABLE MUST REMAIN WITHIN DIMENSIONS		SEE CHART		MATERIAL NO.		SD-98861-002	SHEET NO.
			SIZE 1		THIS DRAWING CONTAINS INFORMATION THAT IS PROPRIETARY TO MOLEX INCORPORATED AND SHOULD NOT BE USED WITHOUT WRITTEN PERMISSION				1 OF 1	



8,25	0988611279	8.600
6,25	0988611179	8.800
Ø TH13 (+0.200)	P/N	WEIGHT (g)

- NOTES:**
- 1 - MATERIAL : BRASS THICKNESS 15 MM (6)
 - 2 - PLATING : POST-TIN PLATED
 - 3 - PART WEIGHT : SEE CHART
 - 4 - CRIMPING RANGE (MM2) : 7 TO 13
 - 5 - PACKAGING : PARTS DELIVERED ON LOOSE



INSPECTION BALLOON NUMBER LOG	
PER DRAWING REVISION:	A
LAST BALLOON NUMBER USED:	19
ADDED BALLOON NUMBERS:	NONE
REMOVED BALLOON NUMBERS:	NONE

FIRST RELEASE EC NO: G2012-0785 DRW: PBOSQUAIN 2012/04/19 CHKD: DATAZOUT 2012/04/19 APPR: OPLESSIS 2012/05/11	QUALITY SYMBOLS ▽-0 ▽-1 ▽-2	GENERAL TOLERANCES (UNLESS SPECIFIED) mm INCH	DIMENSION STYLE MM ONLY	SCALE 5:1	DESIGN UNITS METRIC	FIRST ANGLE PROJECTION
				DRAWN BY PBOSQUAIN	DATE 2012/04/19	TITLE RING TERMINAL 6.25 AND 8.25X17X1.5 7-13
REV A	DESCRIPTION	4 PLACES ± --- ± --- 3 PLACES ± --- ± --- 2 PLACES ± --- ± --- 1 PLACE ± 0.3 ± --- 0 PLACE ± 0.3 ± ---	APPROVED BY OPLESSIS	DATE 2012/05/03	MATERIAL NO.	DOCUMENT NO. SD-98861-002
DRAFT WHERE APPLICABLE MUST REMAIN WITHIN DIMENSIONS			SEE CHART	THIS DRAWING CONTAINS INFORMATION THAT IS PROPRIETARY TO MOLEX INCORPORATED AND SHOULD NOT BE USED WITHOUT WRITTEN PERMISSION		
			SIZE A1	SHEET NO. 1 OF 1		