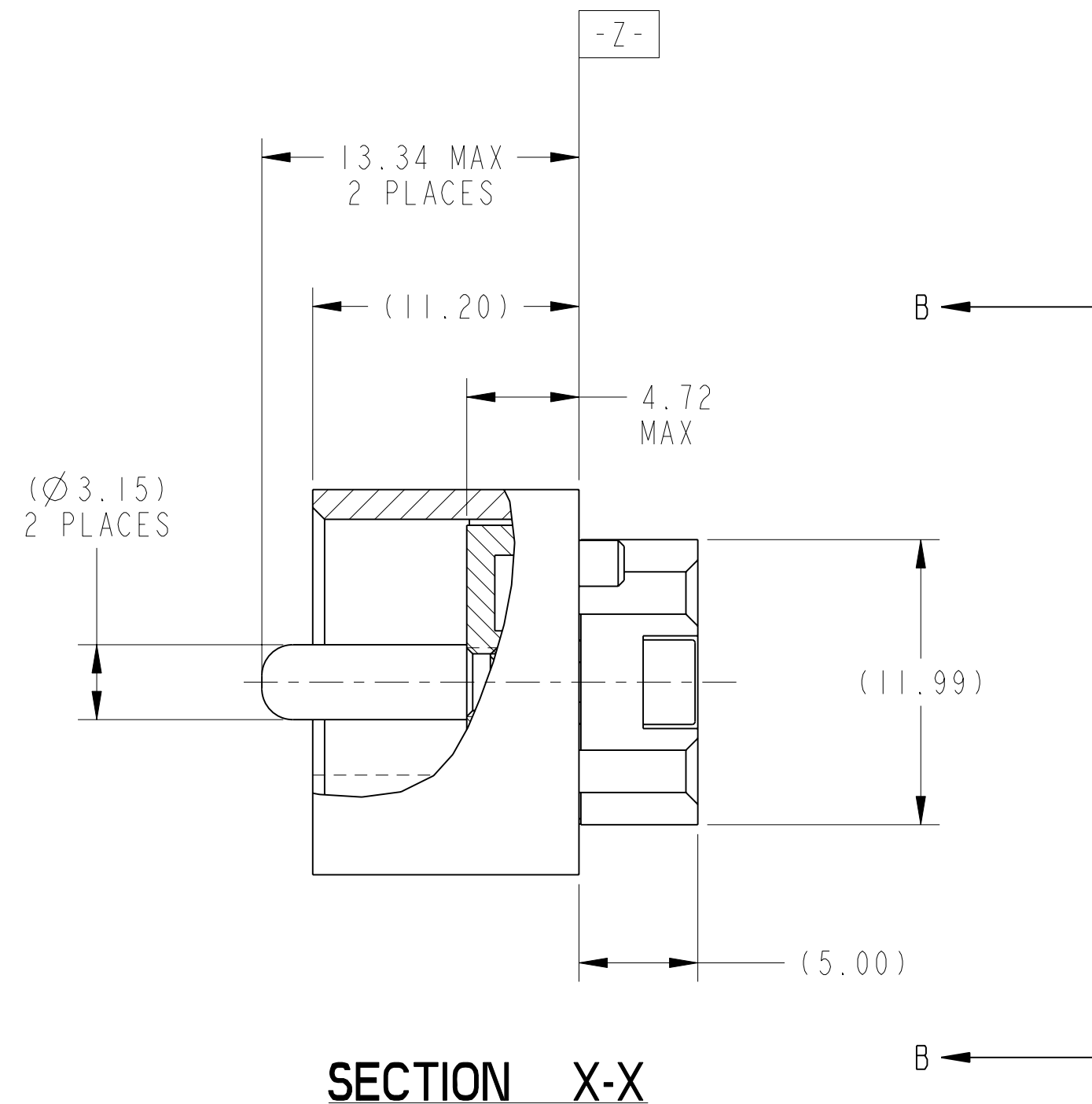
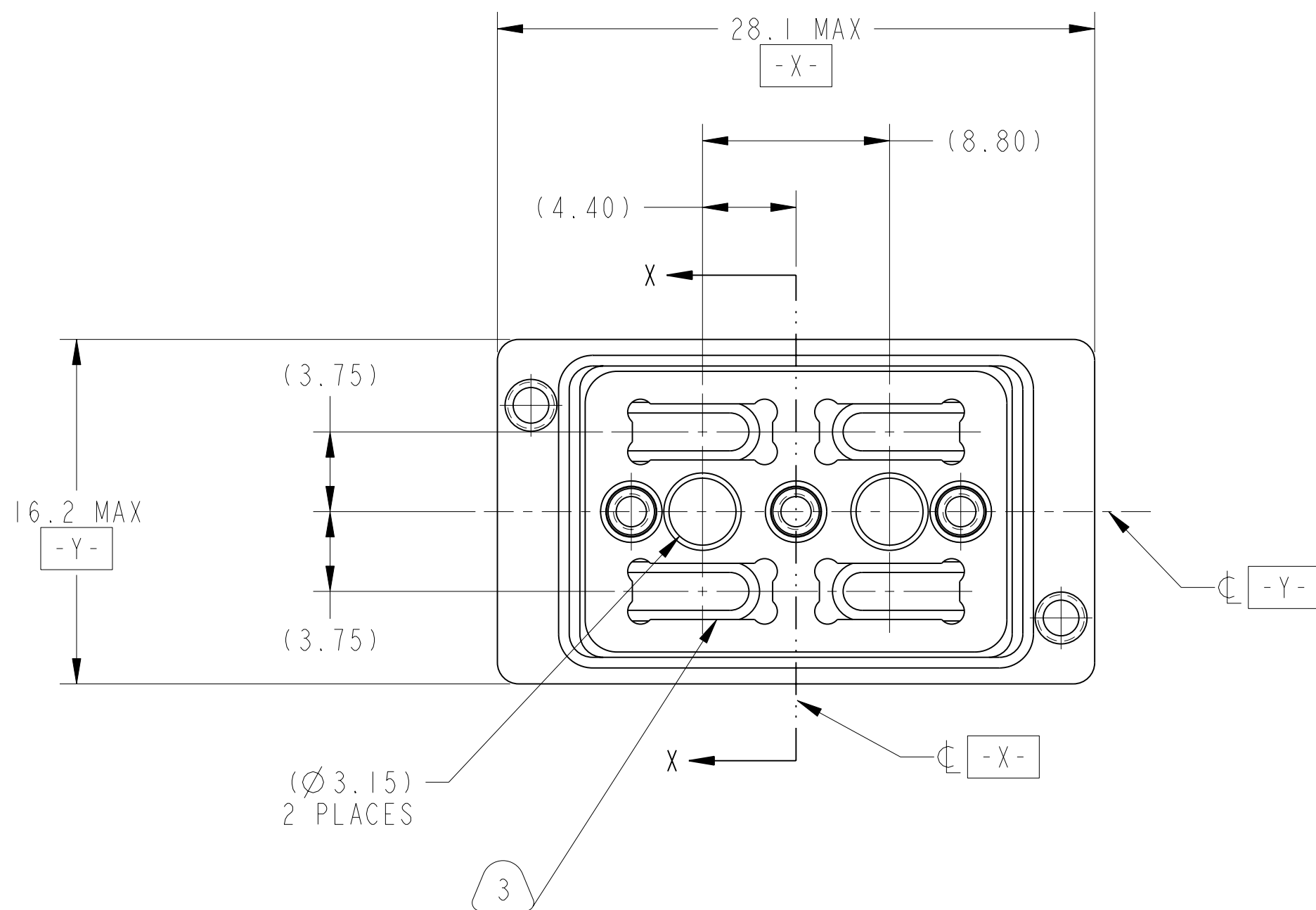
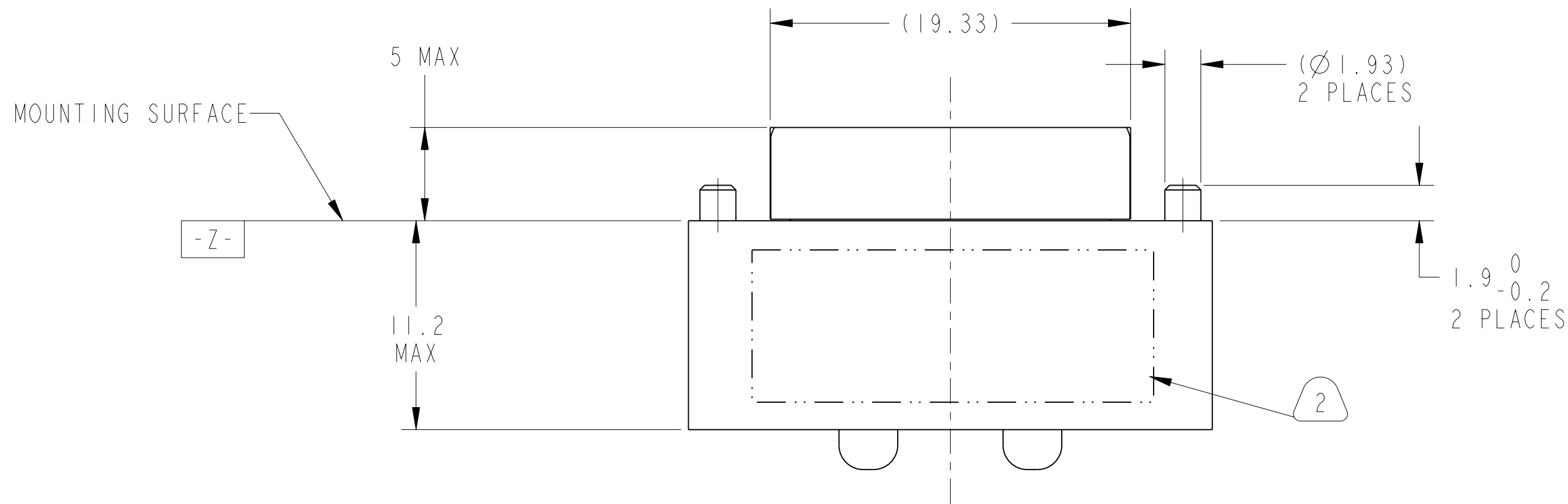


REV. PA1	SHEET 1 OF 3	DOCUMENT NO. 10-504639-008
M REVISIONS		
LTR	DESCRIPTION	DATE
PA1	INITIAL RELEASE	9/27/17



### METRIC DRAWING

SEE SHEET 2

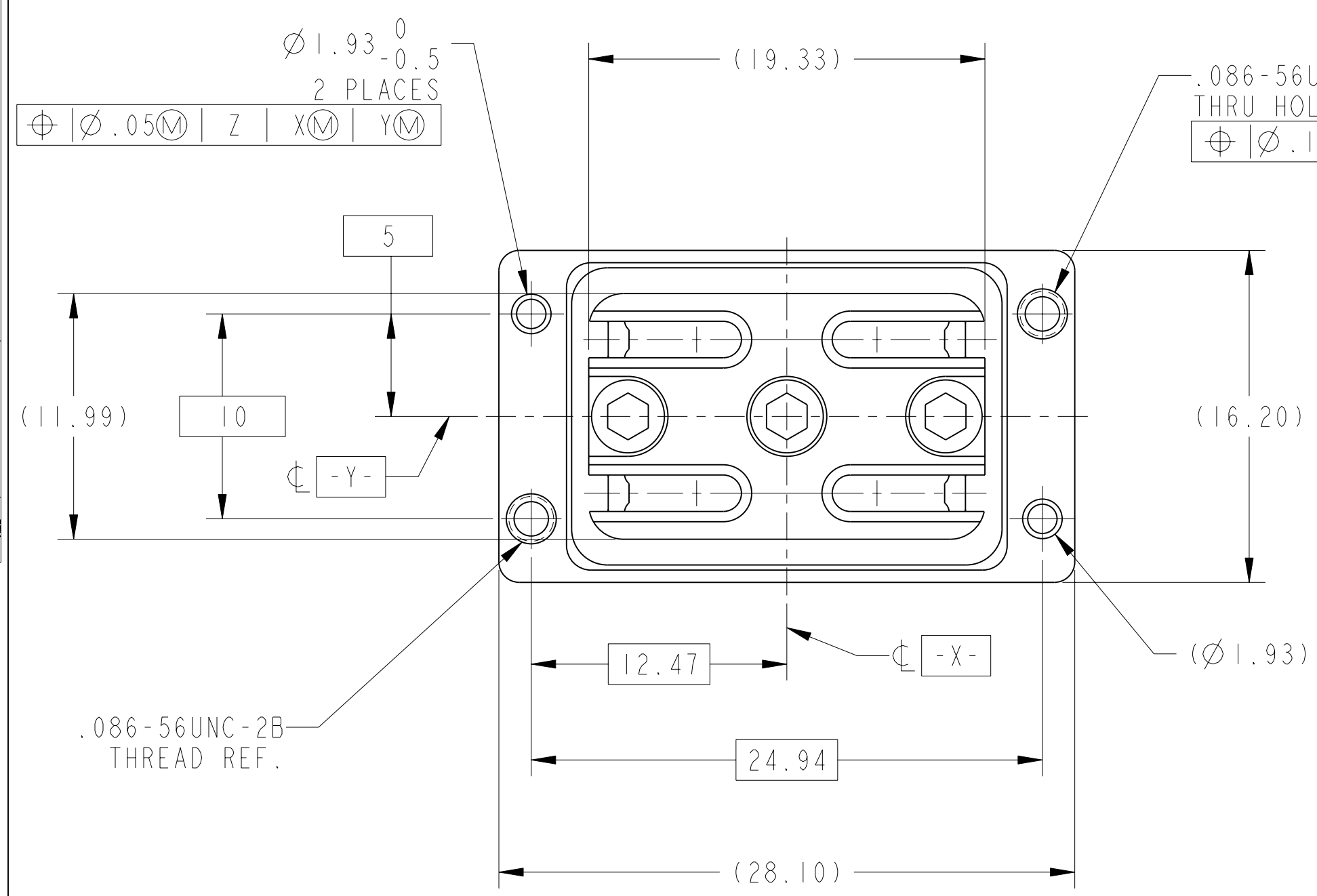
#### NOTES:

THE USE OF THIS DOCUMENT IS UNLIMITED. HOWEVER, DOCUMENTS REFERENCED HEREON MAY CONTAIN LIMITED RIGHTS DATA.

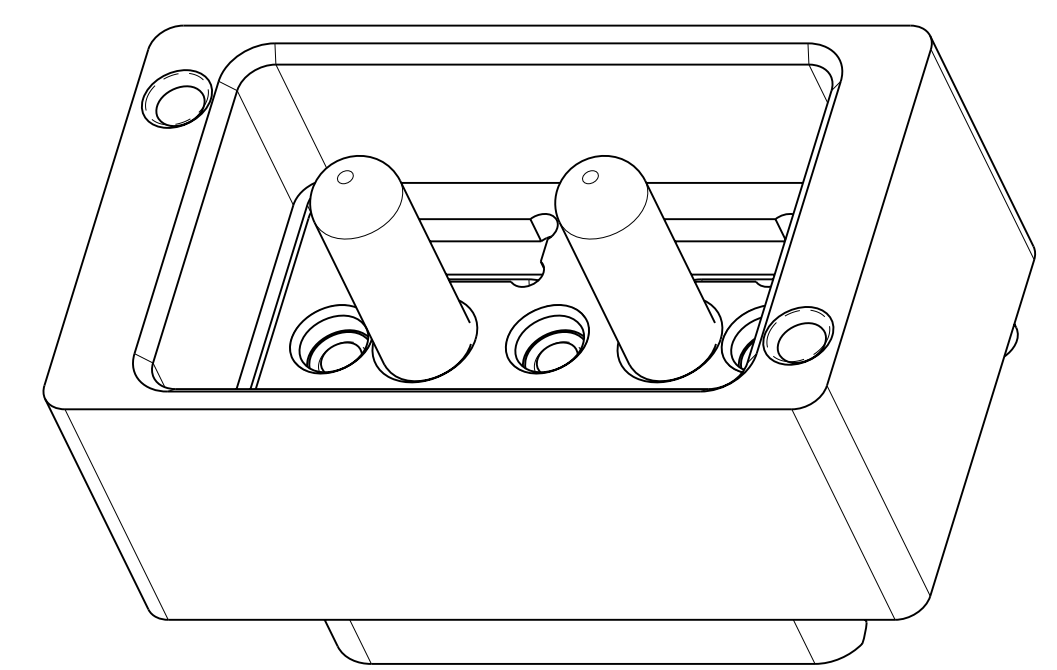
SCALE 4.000

N/A	PRO/ENGINEER INFORMATION
N/A	Pro/e Model Used: 10-504639-008.DWG.ASSEM
NEXT ASSEMBLY	Drawing Name: 10-504639-008

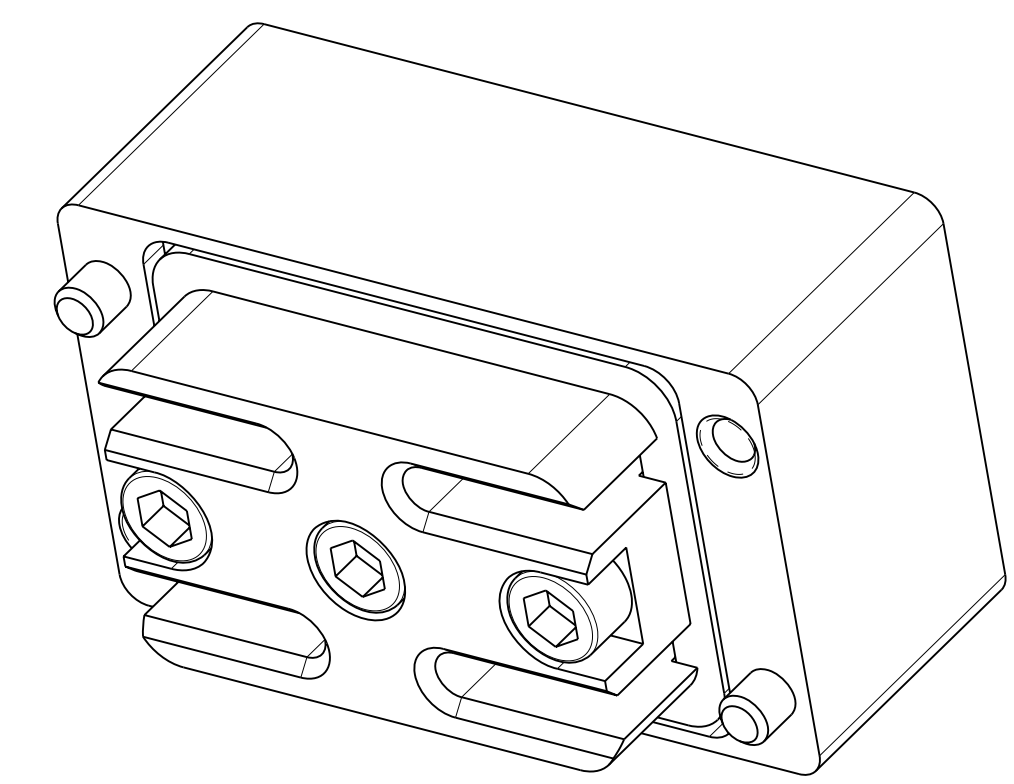
UNLESS OTHERWISE SPECIFIED		SPECIFICATIONS		POS	QTY	PART NUMBER	DESCRIPTION	NOTE
LINEAR DIMENSIONS ARE IN MILLIMETERS		MATERIAL SPEC.		APPROVALS		PARTS LIST		
TOLERANCES:		NONE		PREPARED BY R. CHAPMAN		AMPHENOL CORPORATION		
.XXXX = ±NA				ENGINEER IN CHARGE E. HICKEY		40-60 DELAWARE AVENUE SIDNEY, N.Y. 13839		
.XXX = ±NA				DESIGN MANAGER R. SELFRIDGE		CONNECTOR, FIBER OPTIC, BACKPLANE, 4 MT SPECIAL		
.XX = ±.13				DESIGN ACTIVITY GROUP BLP		84-SEP-17		
.X = ±.25				THIRD ANGLE PROJECTION		VITA 66.1 ENVELOPE		
DIM. & TOL. PER ASME Y14.5M;		PROCESS SPEC.		CAGE CODE		DOCUMENT NO.		REV.
DRM PER MIL-DTL-31000;		9-3856-5		77820		10-504639-008		PA1
OTHER Amphenol Sids. PER 9-3800		9-3895		SIZE		SCALE: 3.0		REF: 10-504639-002
LEGENDS:				C		REF: 10-504639-002		SHEET 1 OF 3
=FLAG NOTE CALL OUT								
REFERENCE ONLY								



VIEW AT B



TOP ISO VIEW  
SCALE 4.000



BOTTOM ISO  
SCALE 4.000

7. FOR CONNECTOR INSTALLATION ILLUSTRATION SEE SHEET 3.
6. FOR MATING MODULE CONNECTOR ASSEMBLY, SEE DRAWING 10-504637-010.
5. TIGHTEN CAPTIVE SCREWS TO 10-14 IN-OZ AFTER INSTALLING MT FERRULE (NOT INCLUDED).
4. FIBER OPTIC INSERT IS DESIGNED FOR MT TYPE FERRULES TERMINATED TO NON-STRENGTH MEMBERED RIBBON CABLE.
3. INDICATED CAVITIES WILL ACCOMODATE A STANDARD 12 CHANNEL MT FERRULE PER IEC 61754-5 (SEE NOTE 4).
2. BLACK INK STAMP "AMPHENOL" PART NUMBER AND DATE CODE ON INDICATED SURFACE PER 9-3856-5. DATE CODE PER 9-3895. CHARACTERS TO BE 1.6±.51 (.062±.020) HIGH. ADDITIONAL INFORMATION MAY BE REQUESTED BY PURCHASE ORDER.
1. PARTS ARE SHIPPED UNASSEMBLED.

THE USE OF THIS DOCUMENT IS UNLIMITED. HOWEVER, DOCUMENTS REFERENCED HEREON MAY CONTAIN LIMITED RIGHTS DATA.

MATERIALS AND FINISHES

COMPONENT	MATERIAL/ FINISH
BACKPLANE SHELL	BODY - MATERIAL - ALUM. ALLOY PER AMS 4150 FINISH - CHROMATE TREATMENT PER MIL-C-5541, CL 3 HELICAL INSERTS - STAINLESS STEEL 304 SERIES PASSIVATED
INSERT ASSEMBLY	FRONT INSERT/RETAINER - MATERIAL - ALUM ALLOY PER AMS 4150 FINISH - CHROMATE TREATMENT PER MIL-C-5541, CL3 SCREW - STAINLESS STEEL 300 SERIES, PASSIVATED HELICAL INSERTS - STAINLESS STEEL 304 SERIES, PASSIVATED GUIDE PIN - STAINLESS STEEL PER AMS 5640. PASSIVATED

SIZE <b>C</b>	CAGE CODE <b>77820</b>	DOCUMENT NO. <b>10-504639-008</b>	REV. <b>PA1</b>
SCALE: 3.0	REF. 10-504639-002	SHEET 2 OF 3	

4

3

2

10-504639-008

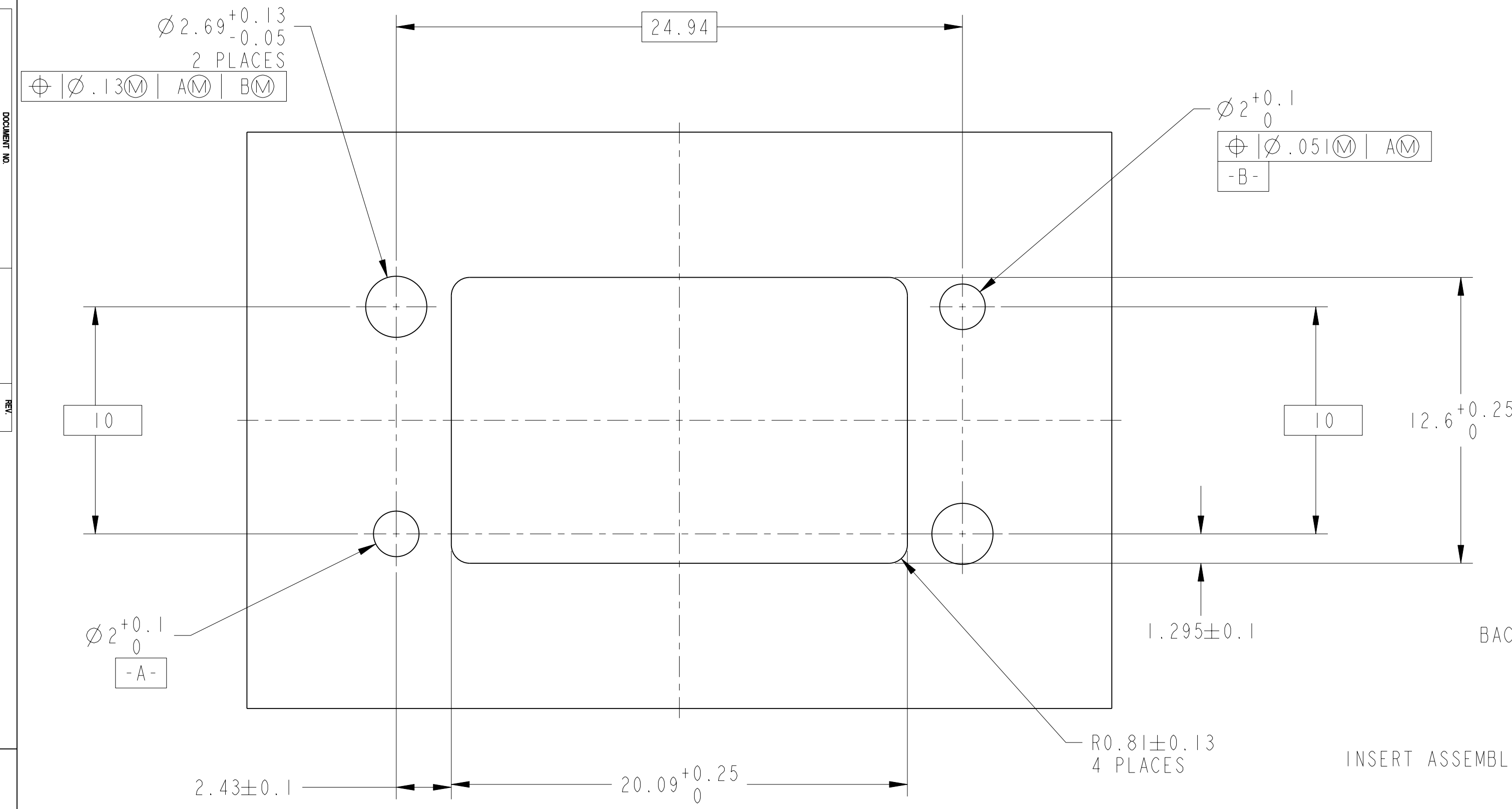
SHEET 3 OF 3

REV. PA1

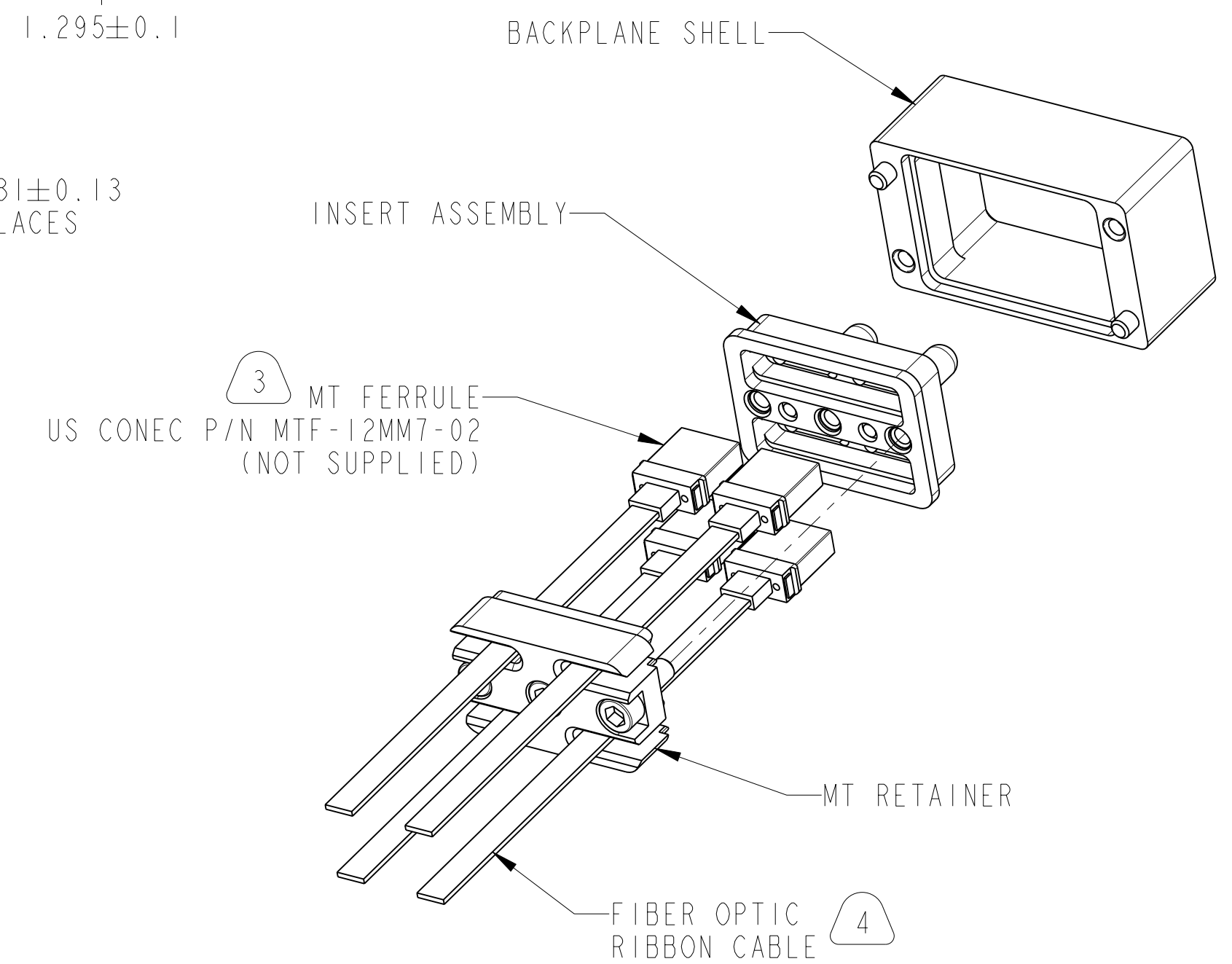
C

B

A



**SUGGESTED BACKPLANE BOARD CUTOUT**  
(CONNECTOR SIDE SHOWN)  
SCALE 6.000



**REAR EXPLODED ASSEMBLY VIEW**  
SCALE 2.000

THE USE OF THIS DOCUMENT IS UNLIMITED. HOWEVER, DOCUMENTS REFERENCED HEREON MAY CONTAIN LIMITED RIGHTS DATA.

SIZE <b>C</b>	CAGE CODE <b>77820</b>	DOCUMENT NO. <b>10-504639-008</b>	REV. <b>PA1</b>
SCALE: 3.0	REF. 10-504639-002	SHEET 3 OF 3	

3

2

1

D

C

B

A

10-504639-008 SHEET 3 OF 3 REV. PA1