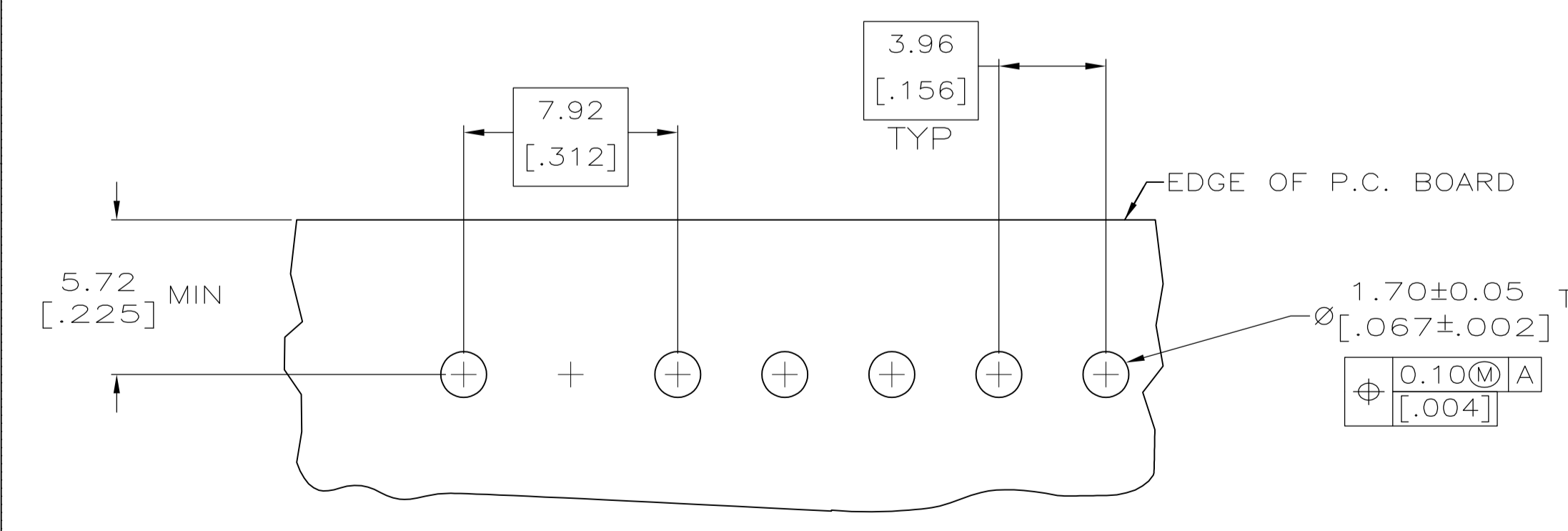
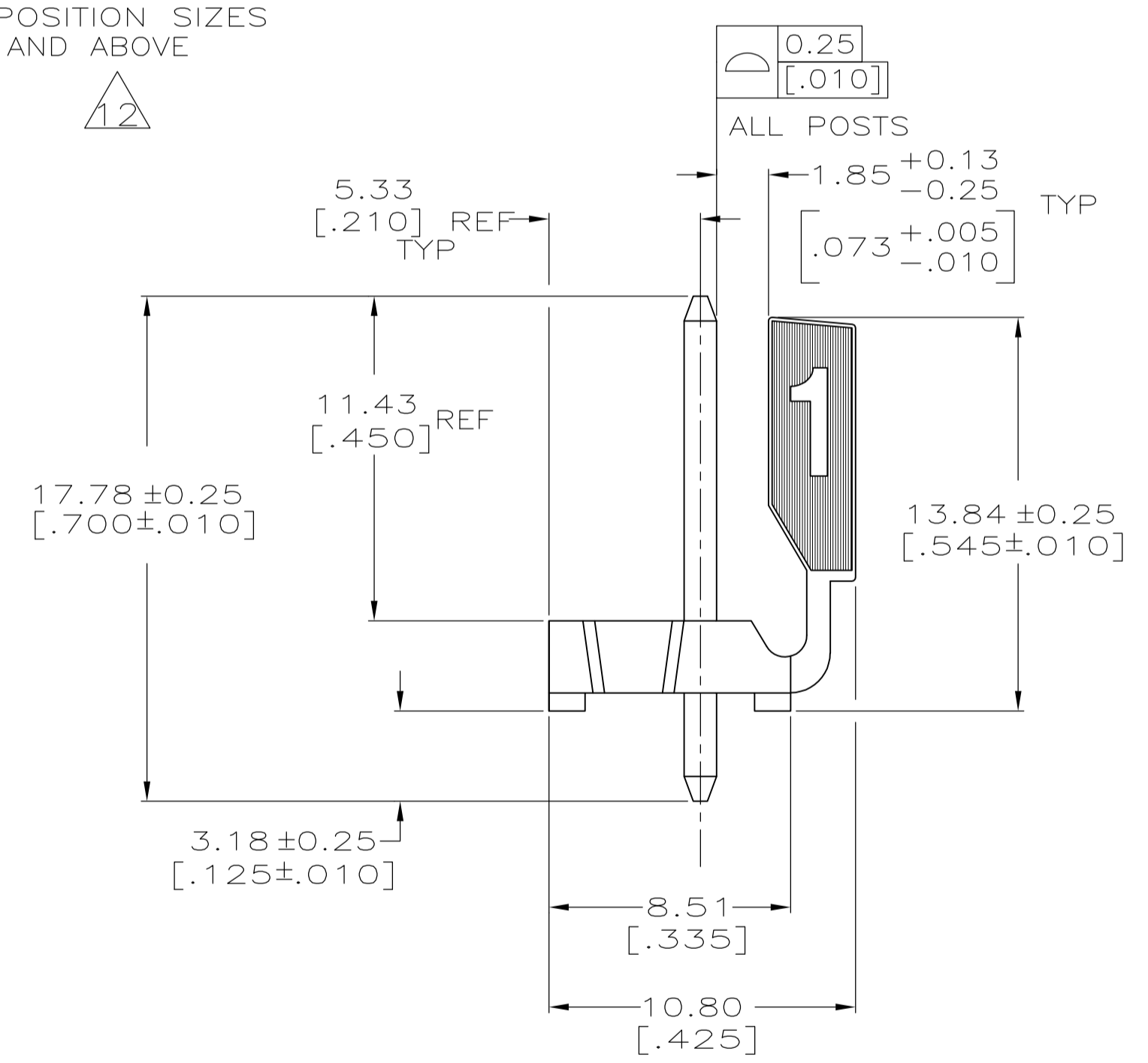
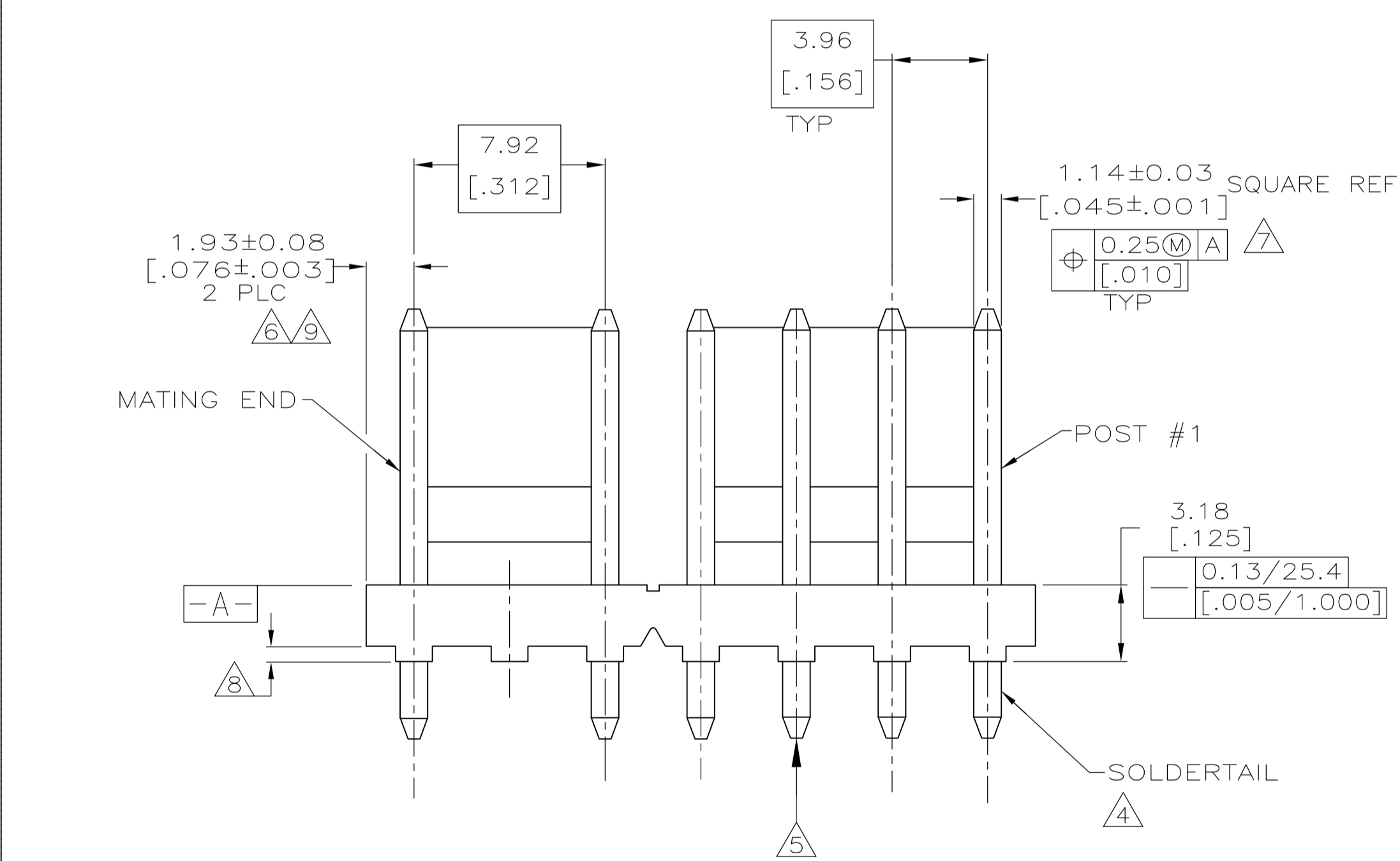


14
 0.89
 [.035]
 REF
 INTERRUPTED WALL
 FOR POSITION SIZES
 6 AND ABOVE
 12



- 1 MATERIAL
 HOUSING: THERMOPLASTIC POLYESTER, GLASS FILLED, DR-48. UL94V-0.
 POST: COPPER ALLOY
- 2 FINISH
 HOUSING: BLACK
 POST: BRIGHT TIN-LEAD (93/7) 0.00380 [.000150]-0.00880 [.000350] THICK OVER NICKEL UNDERPLATE 0.00130 [.000050] MINIMUM THICK OR MATTE TIN PLATE 0.00380 [.000150] THICK OVER NICKEL UNDERPLATE 0.00130 [.000050] MINIMUM THICK IF LEAD FREE.
- 3 UL MARKING MAY NOT APPEAR ON THE 3 POSITION SIZE.
- 4 POST SOLDERTAILS COMPLY WITH AMP SOLDERABILITY SPEC 109-11-2.
- 5 POST WITHSTANDS 13.34N (3 LB) MIN AXIAL FORCE IN EITHER DIRECTION WITHOUT DISLODGING.
- 6 APPLIES AT -A-.
- 7 APPLIES WHEN THE HEADER IS STRAIGHT.
- 8 PLASTIC PROJECTIONS PERMITTED IN THIS ZONE.
- 9 COORDINATE DIMENSIONS APPLIES FROM THE CENTER OF THE ACTUAL FEATURE.
- 10 SOLDER SIDE OF BOARD IS SHOWN.
- 11 DIMENSIONS IN BRACKETS ARE IN INCHES.
- 12 ALL POSITION SIZES HAVE THE BACK WALL NOTCHED ON BOTH ENDS AS SHOWN. THE 2 THRU 5 POSITION SIZES HAVE SOLID BACK WALLS. POSITION SIZES 6 AND ABOVE HAVE AN INTERRUPTED BACK WALL AT VARIOUS LOCATIONS (SEE TABLE FOR INTERRUPTION(S) LOCATIONS).
- 13 EDGE OF POLARIZING LOCK WALL TO BE IN LINE WITH CENTERLINE OF ADJACENT POST WITHIN ±0.13 [.005].
- 14 NOTCH SHOWN MAY OR MAY NOT APPEAR.
- 15 OBSOLETE PART NUMBER

| | | | | | | |
|-------|-----------|---------------------------------------|-------|---------|-----------------|-------------|
| | YES | 4 & 5 | 31.57 | [1.243] | 7 | 3-647184-7 |
| 15 | NO | 4 & 5 | 31.57 | [1.243] | 7 | 647184-7 |
| NOTES | LEAD FREE | BACK WALL INTERRUPTIONS BETWEEN POSTS | mm | [IN] | NO OF POSITIONS | PART NUMBER |

RECOMMENDED MOUNTING HOLE PATTERN FOR 1.57 [.062] THICK P.C. BOARD 10

THIS DRAWING IS A CONTROLLED DOCUMENT.

| | | | | |
|-------------------------|--|---------------------------|---------------------------|--|
| DIMENSIONS: mm [INCHES] | TOLERANCES UNLESS OTHERWISE SPECIFIED: | DIN S. HOOVER 22-OCT-2004 | APVD D. ROSSI 22-OCT-2004 | Tyco Electronics Corporation Harrisburg, Pa 17105-3608 |
| 0 PLC ± | 1 PLC ± | 2 PLC ± | 3 PLC ± | 4 PLC ± |
| ANGLES ± | | | | |
| MATERIAL 1 | FINISH 2 | WEIGHT | SIZE | CAGE CODE |
| | | | A1 | 00779 |
| | | | SCALE | SHEET |
| | | | 5:1 | 1 OF 1 |
| | | | | REV |
| | | | | C2 |

NAME: ASSEMBLY- MTA .156 HEADER, POLARIZED LOCK, STR .045 SQUARE POST, TIN OR TIN-LEAD PLATED, OMITTED POST #6, SPECIAL

DRAWING NO: 647184