



# Test Report

Report No. A221007626310120

Page 1 of 7

**Company Name** DONG GUAN BRIGHT LED ELECTRONICS LTD  
**shown on Report**

**Address** NO.8,GAO LONG EAST RD ,GAOBU TOWN,DONG GUAN CTY,GUANG DONG PROVINCE,CHINA 523283

**The following sample(s) and sample information was/were submitted and identified by/on the behalf of the applicant**

Sample No.	Final Product Name	Sample Name(s)
001	光耦	Photo Coupler 支架
002		Photo Coupler 黑胶
003		Photo Coupler 白胶

Sample Received Date

Mar. 12, 2021

Testing Period

Mar. 12, 2021 to Mar. 31, 2021

**Test Requested**

As specified by client, to test Lead (Pb), Cadmium (Cd), Mercury (Hg), Hexavalent Chromium (Cr(VI)), Polybrominated Biphenyls (PBBs), Polybrominated Diphenyl Ethers (PBDEs), Phthalates (DBP, BBP, DEHP, DIBP) in the submitted sample(s).

**Test Method/Test Result(s)**

Please refer to the following page(s).

\*\*\*\*\*

## Conclusion

Tested Sample	According to standard/directive	Result
Submitted Sample	RoHS Directive 2011/65/EU with amendment (EU) 2015/863	PASS

\*\*\*\*\*

PASS means that the results shown on the report comply with the limits set by RoHS Directive 2011/65/EU with amendment (EU) 2015/863.

Tested by

*Kid Zhang*

Reviewed by

*Amber Yang*

Approved by

*Hill Zheng*

Date

Mar. 31, 2021

Hill Zheng  
Technical Manager

No. R450149963



Centre Testing International Group Co., Ltd.

Inspection & Testing Services

CTI Building, Xing Dong Community, Xin'an Sub-district, Bao'an District, Shenzhen City, Guangdong Province, P.R. China

# Test Report

Report No. A221007626310120

Page 2 of 7

## Test Method

Tested Item(s)	Test Method	Measured Equipment(s)
Lead (Pb)	IEC 62321-5:2013	ICP-OES
Cadmium (Cd)	IEC 62321-5:2013	ICP-OES
Mercury (Hg)	IEC 62321-4:2013+AMD1:2017 CSV	ICP-OES
Hexavalent Chromium (Cr(VI))	IEC 62321-7-1:2015	UV-Vis
	IEC 62321-7-2:2017 and/or determination of Total Chromium by IEC 62321-5:2013	UV-Vis/ICP-OES
Polybrominated Biphenyls (PBBs)	IEC 62321-6:2015	GC-MS
Polybrominated Diphenyl Ethers (PBDEs)	IEC 62321-6:2015	GC-MS
Phthalates (DBP, BBP, DEHP, DIBP)	IEC 62321-8:2017	GC-MS

# Test Report

Report No. A221007626310120

Page 3 of 7

## Test Result(s)

Tested Item(s)	Result			MDL	Limit
	001	002	003		
Lead (Pb)	N.D.	N.D.	N.D.	2 mg/kg	1000 mg/kg
Cadmium (Cd)	N.D.	N.D.	N.D.	2 mg/kg	100 mg/kg
Mercury (Hg)	N.D.	N.D.	N.D.	2 mg/kg	1000 mg/kg
Hexavalent Chromium (Cr(VI))	--	N.D.	N.D.	8 mg/kg	1000 mg/kg
	N.D. ▼	--	--	0.10 µg/cm <sup>2</sup> (LOQ)	1000 mg/kg

Tested Item(s)	Result		MDL	Limit
	002	003		
<b>Polybrominated Biphenyls (PBBs)</b>				
Monobromobiphenyl	N.D.	N.D.	5 mg/kg	1000 mg/kg
Dibromobiphenyl	N.D.	N.D.	5 mg/kg	
Tribromobiphenyl	N.D.	N.D.	5 mg/kg	
Tetrabromobiphenyl	N.D.	N.D.	5 mg/kg	
Pentabromobiphenyl	N.D.	N.D.	5 mg/kg	
Hexabromobiphenyl	N.D.	N.D.	5 mg/kg	
Heptabromobiphenyl	N.D.	N.D.	5 mg/kg	
Octabromobiphenyl	N.D.	N.D.	5 mg/kg	
Nonabromobiphenyl	N.D.	N.D.	5 mg/kg	
Decabromobiphenyl	N.D.	N.D.	5 mg/kg	

Tested Item(s)	Result		MDL	Limit
	002	003		
<b>Polybrominated Diphenyl Ethers (PBDEs)</b>				
Monobromodiphenyl ether	N.D.	N.D.	5 mg/kg	1000 mg/kg
Dibromodiphenyl ether	N.D.	N.D.	5 mg/kg	
Tribromodiphenyl ether	N.D.	N.D.	5 mg/kg	
Tetrabromodiphenyl ether	N.D.	N.D.	5 mg/kg	
Pentabromodiphenyl ether	N.D.	N.D.	5 mg/kg	
Hexabromodiphenyl ether	N.D.	N.D.	5 mg/kg	
Heptabromodiphenyl ether	N.D.	N.D.	5 mg/kg	
Octabromodiphenyl ether	N.D.	N.D.	5 mg/kg	
Nonabromodiphenyl ether	N.D.	N.D.	5 mg/kg	
Decabromodiphenyl ether	N.D.	N.D.	5 mg/kg	

# Test Report

Report No. A221007626310120

Page 4 of 7

Tested Item(s)	Result		MDL	Limit
	002	003		
<b>Phthalates (DBP, BBP, DEHP, DIBP)</b>				
Dibutyl phthalate (DBP) CAS#:84-74-2	N.D.	N.D.	50 mg/kg	1000 mg/kg
Butyl benzyl phthalate (BBP) CAS#:85-68-7	N.D.	N.D.	50 mg/kg	1000 mg/kg
Di-(2-ethylhexyl) phthalate (DEHP) CAS#:117-81-7	N.D.	N.D.	50 mg/kg	1000 mg/kg
Diisobutyl phthalate (DIBP) CAS#:84-69-5	N.D.	N.D.	50 mg/kg	1000 mg/kg

## Sample/Part Description

- 001 Metal with silver-white plating
- 002 Black plastic
- 003 Beige plastic

**Remark:** The sample(s) had been dissolved totally tested for Lead, Cadmium, Mercury.

-MDL = Method Detection Limit

-N.D. = Not Detected (<MDL or LOQ)

-mg/kg = ppm = parts per million

-1000 mg/kg = 0.1%

-LOQ = Limit of Quantification, The LOQ of Hexavalent chromium is 0.10 µg/cm<sup>2</sup>

-▼The sample is negative for Cr(VI) – The Cr(VI) concentration is below 0.10 µg/cm<sup>2</sup>. The coating is considered a non-Cr(VI) based coating.

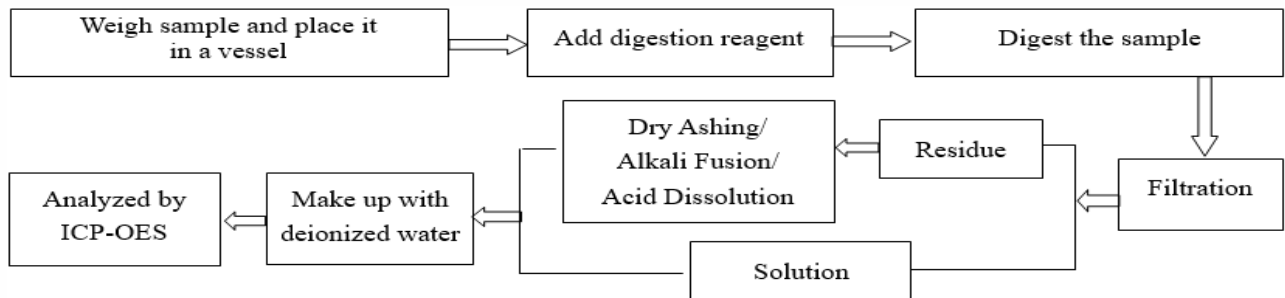
# Test Report

Report No. A221007626310120

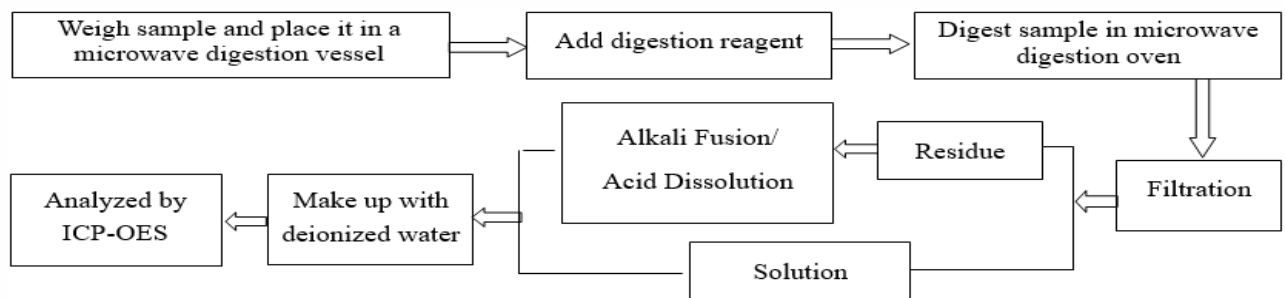
Page 5 of 7

## Test Process

### 1. Lead (Pb), Cadmium (Cd), Chromium(Cr)

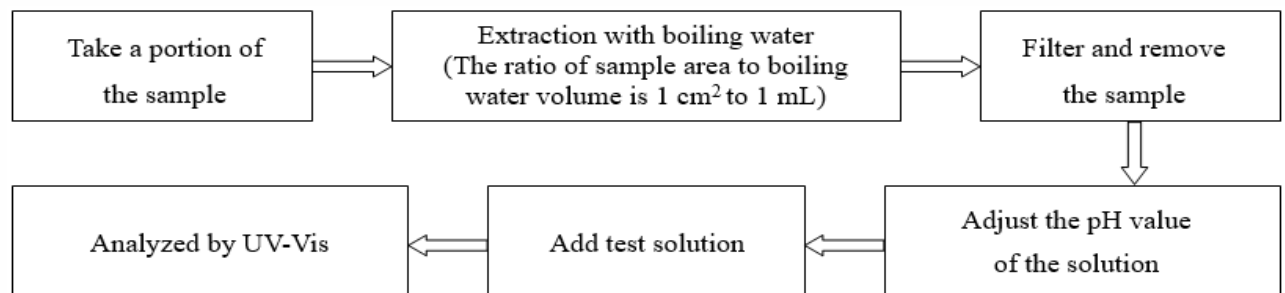


### 2. Mercury (Hg)

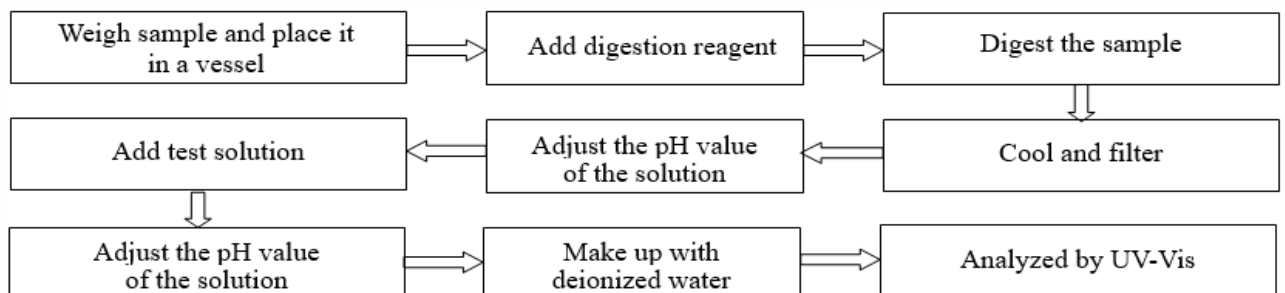


### 3. Hexavalent Chromium (Cr(VI))

#### (1) IEC 62321-7-1:2015



#### (2) IEC 62321-7-2:2017

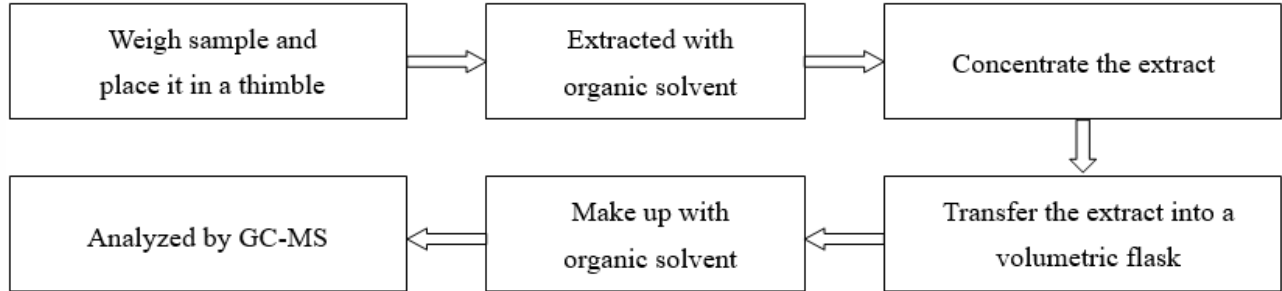


# Test Report

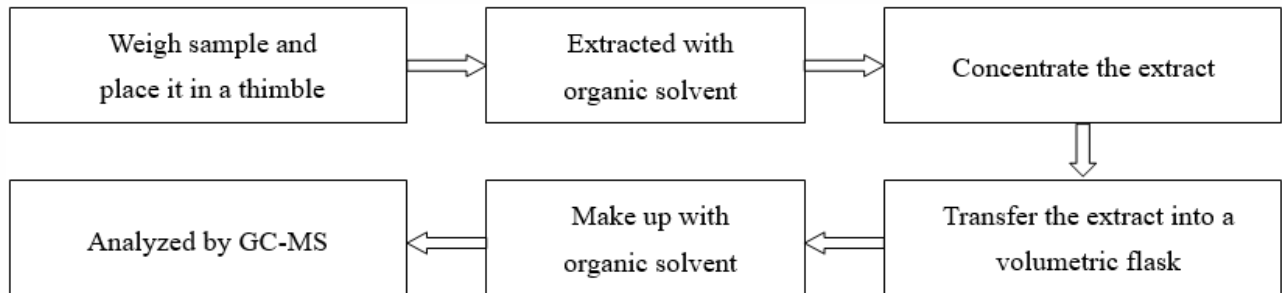
Report No. A221007626310120

Page 6 of 7

## 4. Polybrominated Biphenyls (PBBs), Polybrominated Diphenyl Ethers (PBDEs)



## 5. Phthalates (DBP, BBP, DEHP, DIBP)



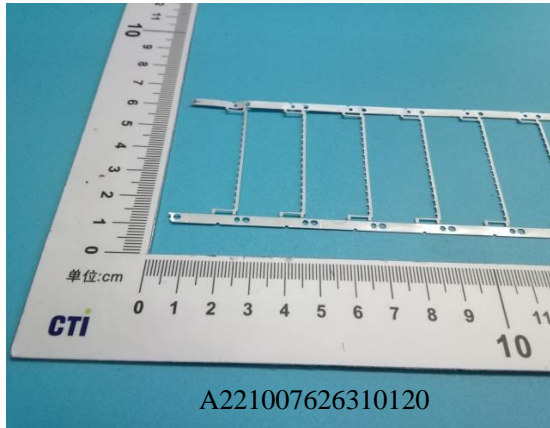
# Test Report

Report No. A221007626310120

Page 7 of 7

## Photo(s) of the sample(s)

001



002



003



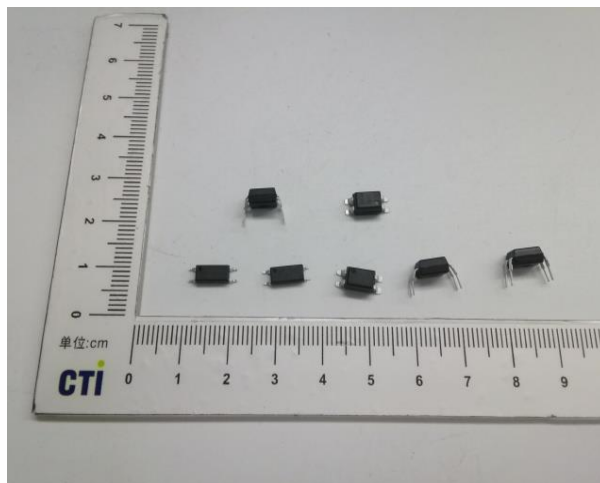
### Statement:

1. This report is considered invalid without approved signature, special seal and the seal on the perforation;
2. The Company Name shown on Report and Address, the sample(s) and sample information was/were provided by the applicant who should be responsible for the authenticity which CTI hasn't verified;
3. The result(s) shown in this report refer(s) only to the sample(s) tested;
4. Without written approval of CTI, this report can't be reproduced except in full;
5. In case of any discrepancy between the English version and Chinese version of the testing reports (if generated), the Chinese version shall prevail.

\*\*\* End of Report \*\*\*

## Appendix

### Client Reference Photo (Non-tested sample)



#### Statement:

The Appendix Information was/were provided by the applicant who should be responsible for the authenticity which CTI hasn't verified.