

S CN BN - J 1 1 75 - SO RBP

SUNTSU

CONNECTOR

BNC

Connector Type
Jack

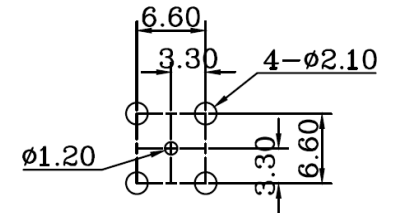
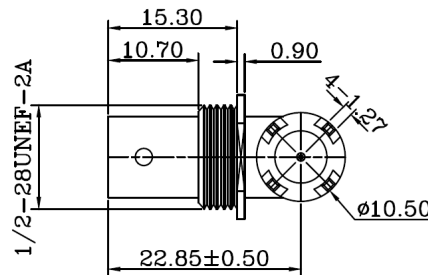
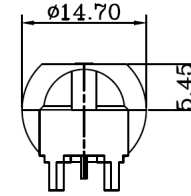
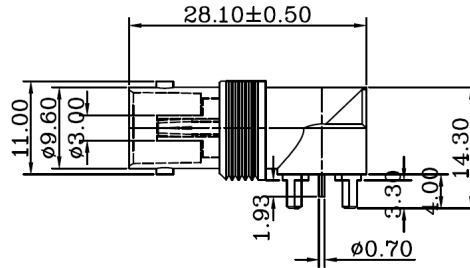
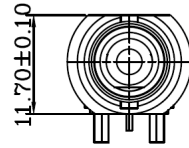
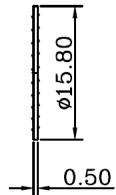
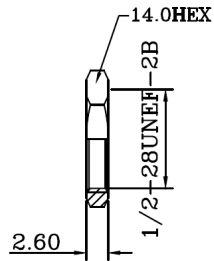
Rows

Connectors
per Row

Impedance
75

Contact Termination
Solder

Mounting Style
Right Angle
Bulkhead PCB
Mount



**Recommended
Mounting
Layout**

1. Materials:
 - a) Body: Zinc Tin Plated
 - b) Contact: Brass Tin Plated
 - c) Insulator: Teflon Natural
2. Normal Impedance: 75Ω
3. Frequency Range: 0-1 GHz
4. Max Peak Voltage: 500V
5. Dielectric Strength: 1500V RMS
6. Insulation Resistance: 5000MΩ/Min



**BNC FEMALE RIGHT ANGLE
PCB MOUNT**

Document History				Part No.	REV.	Drawn		Page
Edits Made	Date	Edited By	Approved By	SCNBN-J1175-SORBP	A	B. Gibbons	06/28/2021	1 / 1
Initial Release	06/28/2021	B. Gibbons	KH Mun			Drawing No.	Checked	
				Tolerance	None	Approved	KH Mun	06/28/2021
					UNIT		KH Mun	06/28/2021
					mm			