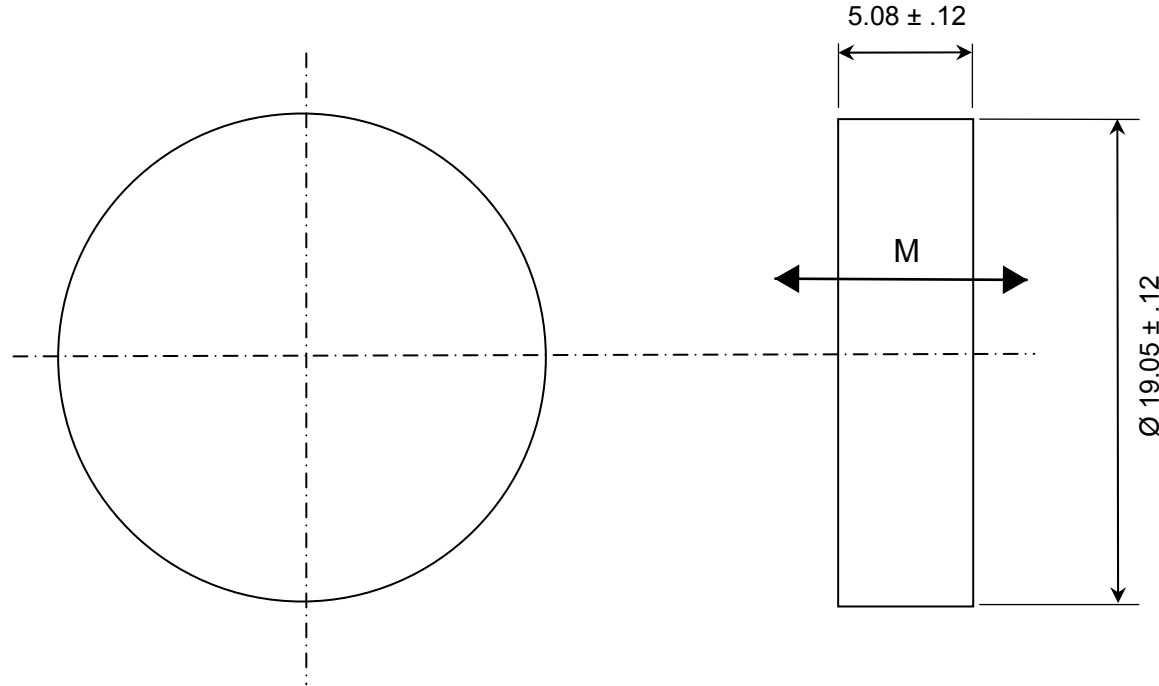


CONFIDENTIAL & PROPRIETARY INFORMATION

This document contains Confidential and Proprietary Information of Alliance LLC, and all design, manufacturing, reproduction, use, and sale rights of such information are expressly reserved

ALL DIMENSIONS ARE IN MM



NOTES:

1. MAGNET PROPERTIES PER S22:

- Br: 9,500-10,000 G
- Hc: 9,000-9,500 Oe
- Hci: ≥15,000 Oe
- T max: 250 C

2. SUPPLIED MAGNETIZED ACROSS THE THICKNESS

Alliance LLC
1450 CLARK DRIVE, VALPARAISO, INDIANA 46385

DESCRIPTION: 19.05 mm x 15.08 mm DISC MAGNET

Samarium Cobalt Magnet	P/N: YB-114-1
-------------------------------	----------------------

GRADE: S22"	Drwg by: BT	REV LEVEL: B"
-------------	-------------	---------------

COATING: None"	Appr by: DV	Appr. Dated: 08-18-2019"
----------------	-------------	--------------------------

TOLERANCES
(UNLESS OTHERWISE NOTED)

DECIMAL	METRIC
X.XX = ± .01	X.X = ± .25
X.XXX = ± .005	X.XX = ± .13

ANGLES
± .5°

DO NOT SCALE DRAWING



REV	DESCRIPTION	DATE	BY
B	Changed CAD, incl cert, 3D	2/11/20	BT