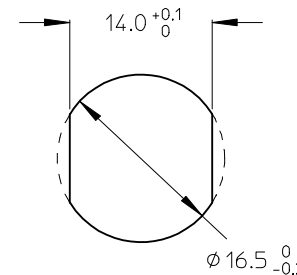
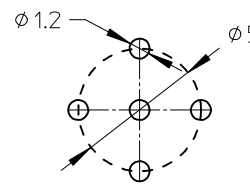


ITEM	COMPONENT	MATERIAL	FINISH
1	REC SHELL	BRASS	NICKEL PLATED
2	INSERT	PUR	BLACK
3	CONTACT	BRASS / GOLD	CuZn Ni/ Au
4	M16 NUT	BRASS	NICKEL PLATED
5	O-RING	NBR	BLACK
6	O-RING	VITON	RED
7	POTTING MATERIAL	EPOXY	NONE



POL	MATERIAL NO.	ENGINEERING NO.
4	1200845130	WR4U40001
5	1200845133	WR5U40001

VOLTAGE RATING	250V
AMPERAGE RATING	4A
PROTECTION CLASS	IP 67/68/69K
OPERATING TEMPERATURE	-25°C / +90 °C
UL CERTIFICATION	FILE NO. E152210
CSA CERTIFICATION	FILE NO. LR6837

ENTER DESCRIPTION EC NO: IPG2013-0800 DRWN:BBRAUCH 2012/11/28 CHKD:APOHL 2012/12/12 APPR:CBURGER 2012/12/13	QUALITY SYMBOLS ▽=0 C=0	GENERAL TOLERANCES (UNLESS SPECIFIED)		DIMENSION STYLE	SCALE	DESIGN UNITS	THIRD ANGLE PROJECTION
		mm	INCH	MM ONLY	5:1	METRIC	THIRD ANGLE PROJECTION
A	DESCRIPTION	4 PLACES	± ---	± ---	DRAWN BY	DATE	TITLE RECEPTACLE FEMALE M12-4P ULTRA LOCK, BLACK, M16
		3 PLACES	± ---	± ---	CHECKED BY	DATE	
		2 PLACES	± 0.05	± ---	APOHL	2012/12/12	
		1 PLACE	± 0.3	± ---	APPROVED BY	DATE	
		0 PLACE	± 0.5	± ---	FPACHER	2010/02/01	
ANGULAR ± 1 °		DRAFT WHERE APPLICABLE MUST REMAIN WITHIN DIMENSIONS		MATERIAL NO.	DOCUMENT NO.		SHEET NO.
				SEE TABLE	SD-120084-011		1 OF 1
THIS DRAWING CONTAINS INFORMATION THAT IS PROPRIETARY TO MOLEX INCORPORATED AND SHOULD NOT BE USED WITHOUT WRITTEN PERMISSION							