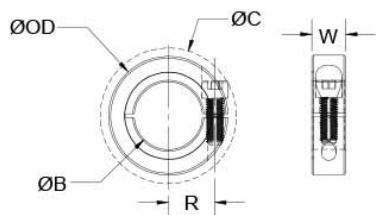




CL-39-F

Ruland CL-39-F, 2 7/16" One-Piece Shaft Collar, Black Oxide Steel, Clamp Style, 3 1/2" OD, 0.750" Width



Description

Ruland CL-39-F is a one-piece shaft collar with a 2.4375" bore, 3 1/2" OD, and 0.750" width. The clamp style design does not mar the shaft, is easy to remove, and is indefinitely adjustable. It is commonly used for guiding, spacing, stopping, mounting, and component alignment. Equipment manufacturers benefit from the tightly controlled face to bore perpendicularity (TIR of ? .002"). Perpendicularity is critical for alignment when the shaft collar is used as a load bearing face, mechanical stop, or for mounting components such as gears or bearings. Proprietary processes have been developed by Ruland to maintain superior fit, finish, and holding power. CL-39-F is stamped with the Ruland name and bore size for ease of identification. Forged screws test beyond ANSI standards to ensure maximum holding power. CL-39-F is manufactured from solid bar stock sourced from select North American mills and machined to a fine burr free finish. Ruland uses 1215 lead-free steel with a proprietary black oxide finish that produces a fine glossy finish while increasing holding power and resisting corrosion. CL-39-F is RoHS3 and REACH compliant and manufactured in our Marlborough, MA factory under strict controls using proprietary processes.

Product Specifications


Bore (B)	2.4375 in	Bore Tolerance	+0.0020 in / +0.0005 in
Outer Diameter (OD)	3 1/2 in	Clearance Diameter (C) MAX	3.707 in
Width (W)	0.750 in	Width Tolerance	+0.003 in / -0.010 in
Recommended Shaft Tolerance	+0.0000 in / -0.0005 in	Forged Clamp Screw	5/16-24
Screw Material	Alloy Steel	Hex Wrench Size	1/4 in
Screw Finish	Black Oxide	Seating Torque	325 lb-in
Screw Location (R)	1.484 in	Number of Screws	1 ea
Material Specification	1215 Carbon Steel Bar	Finish Specification	Hot Process Black Oxide, Impregnated with Naphthenic Oil, Centrifugally Dried

Manufacturer	Ruland Manufacturing	Country of Origin	USA
Temperature	-40°F to 350°F (-40°C to 176°C)	Weight (lbs)	0.994300
UPC	634529000953	Tariff Code	8483.60.8000

UNSPC	31162811
--------------	----------

Note 1 Performance ratings are for guidance only. The user must determine suitability for a particular application.

Note 2 No backslot

Prop 65  **WARNING** This product can expose you to the chemical Ethylene Thiourea, known to the State of California to cause cancer and birth defects or other reproductive harm. For more information go to www.P65Warnings.ca.gov.

Installation Instructions

1. Use the CL-39-F one-piece shaft collar as it is received.
2. Wipe the bore clean.
3. Apply a thin coat of light oil to the shaft.
4. Place the collar onto the desired shaft location with the groove side as the work surface. Tighten the collar using a 1/4 in hex wrench until a slight resistance is felt.
5. Wring collar into its final position and tighten the screw to the full recommended seating torque of 325 lb-in using a 1/4 in torque wrench.