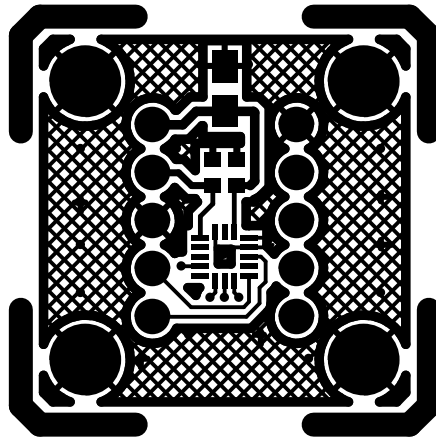
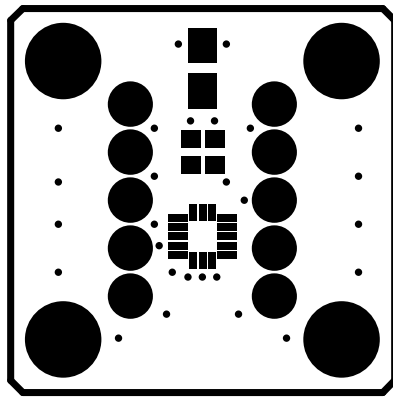


ADXL362Z

SILKSCREEN LAYER 1 ( TOP )

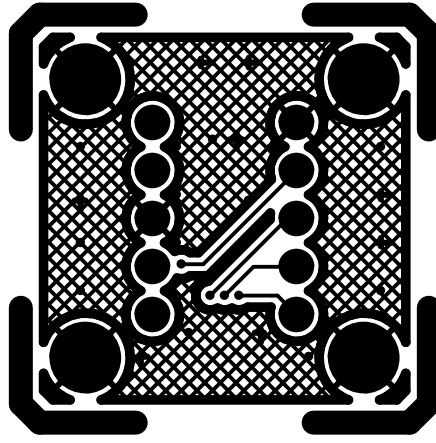


ADXL362Z  
LAYER 1 ( TOP )

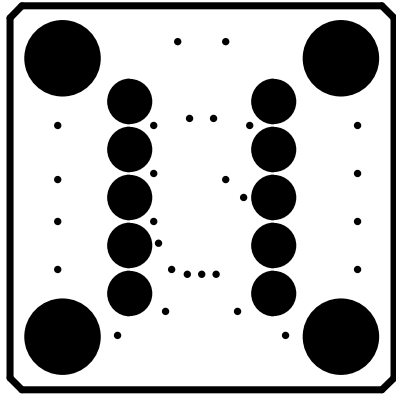


ADXL362Z

SOLDERMASK LAYER 1 ( TOP )



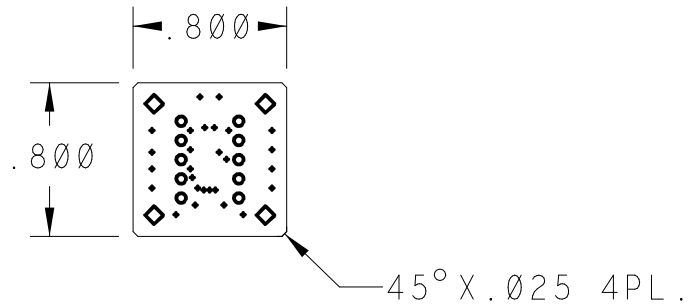
LAYER 5 (BOTTOM)  
ADXL365



ADXL3655

SOLDERMASK LAYER 5 (BOTTOM)

# PCB VIEWED FROM LAYER 1 ( TOP )



## NOTES :

1. PCB SPEC: PCB SHALL BE MANUFACTURED TO MEET ALL SPECIFICATIONS AND REQUIREMENTS OF IPC-6011 AND IPC-6012, CLASS 2 EXCEPT AS NOTED.
2. MATERIAL: EPOXY GLASS, TYPE FR4, 0.062" THICK, 1 OZ CU PLATE BOTH SIDES. DK 4.3-4.5
3. SOLDER MASK: COLOR GREEN, PHOTOIMAGEABLE TYPE PER IPC SM-840, TYPE B, CLASS 2. APPLY IMMERSION GOLD (NIG) OR SILVER.
4. FINISH: IMMERSION GOLD (NIG) OR SILVER, WHITE TIN IS ACCEPTABLE.
5. SILKSCREEN: APPLY WHITE EPOXY INK TO COMPONENT SIDE OF PCB. ADD VENDOR ID AND DATE CODE TO SILKSCREEN TOP.
6. DRILL SIZES: HOLES SIZES IN DRILL LEGEND REPRESENT FINISHED SIZE AFTER PLATING. MIN THICKNESS TO BE 0.0015".
7. PHOTOTOOLS: ON FINISHED PCB'S, COPPER ETCH IS TO BE WITHIN +/- 0.0005" OF PHOTOTOOL DATA.

DRILL CHART: TOP to BOTTOM			
ALL UNITS ARE IN MILS			
SYMBOL	SIZE	FINISH	QTY
◆	10.0	PLATED	27
○	43.0	PLATED	10
◇	120.0	PLATED	4

					TITLE / TITRE PCB DETAIL							
					301-440 - ADXL362 Evaluation Board							
					DWN/DESS	DATE	CHK/VER	DATE	APPD/APP	DATE		
					2011-10-28							
					A	DWG NO. NO. DU DESSIN		ADXL362Z				
					SCALE/ECHELLE	INTEMPCO CONTROLS LTD			SHEET	1	OF	1
LTR/LET	REVISION	DATE	DWN/DESS	CHK/VER	1:1	LES CONTROLES INTEMPCO LTEE			FEUILLE	1	DE	1

CE DESSIN ET SES SPECIFICATIONS SONT LA PROPRIETE DE LES CONTROLES INTEMPCO LTEE. IL NE PEUVENT ETRE PRETES, TRANSFERES, REPRODUITS, COPIES OU SERVIR A LA FABRICATION, L'ACHAT OU LA VENTE D'ARTICLES SANS LE CONSENTEMENT ECRIT DE LES CONTROLES INTEMPCO LTEE.

THIS DRAWING AND SPECIFICATIONS HEREIN ARE THE PROPERTY OF INTEMPCO CONTROLS LTD AND MUST NOT BE LOANED OR OTHERWISE TRANSFERRED TO ANY THIRD PARTY OR REPRODUCED, COPIED OR USED IN CONNECTION WITH THE MANUFACTURE PURCHASE OR SALE OF ITEMS WITHOUT WRITTEN CONSENT OF INTEMPCO CONTROLS LTD.