

Light is OSRAM

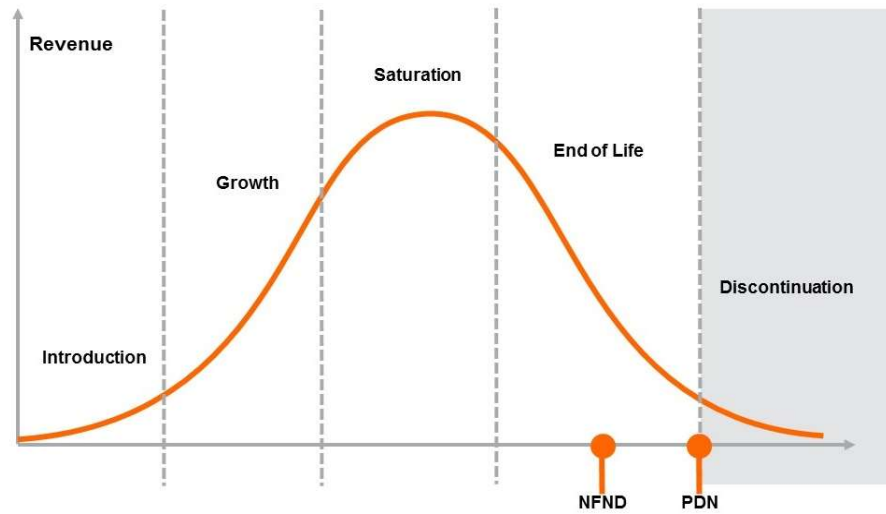
Product Or Individual Q-Code Discontinuation (acc. JEDEC J-STD-048)  
OS-PDN-2021-100

01 September 2021

---

**Last order:** 30 September 2021  
**Last delivery:** 31 December 2021

---



Please direct your feedback to your local Sales office.

DISCONTINUED				NEW (REPLACEMENT)		
Device	Ordering Code	Brand	Reason for discontinuation	Device	Datasheet Ordering Code	Brand
GW JTLRSX.EM-XEAYGA-57M-1-100-R33	Q65112A7460	DURIS E 2835	Product EOL	No Replacement		
GW JTLRSX.EM-XEAYGA-65M-1-100-R33	Q65112A7461	DURIS E 2835	Product EOL	No Replacement		
GW JTLRSX.EM-LVL3-30S5-1-100-R33	Q65113A0036	DURIS E 2835	Chip EOL	No Replacement		
GW JTLRSX.EM-LXL5-57S5-1-100-R33	Q65113A0037	DURIS E 2835	Chip EOL	No Replacement		
GW JTLRSX.EM-LVL3-40S5-1-100-R33	Q65113A0038	DURIS E 2835	Chip EOL	No Replacement		
GW JTLRSX.EM-LXL5-65S5-1-100-R33	Q65113A0039	DURIS E 2835	Chip EOL	No Replacement		

Ordering Code	Notification	Device	Product Descr.	Brand	Reason	Repl. Product Descr.	Repl. Ordering Code
Q65112A7460	OS-PDN-2021-100	GW JTLRSX.EM	GW JTLRSX.EM-XEAYGA-57M-1-100-R33	DURIS	Product EOL	n/a	NO REPLACEMENT
Q65112A7461	OS-PDN-2021-100	GW JTLRSX.EM	GW JTLRSX.EM-XEAYGA-65M-1-100-R33	DURIS	Product EOL	n/a	NO REPLACEMENT
Q65113A0036	OS-PDN-2021-100	GW JTLRSX.EM	GW JTLRSX.EM-LVL3-30S5-1-100-R33	DURIS	Chip EOL	n/a	NO REPLACEMENT
Q65113A0037	OS-PDN-2021-100	GW JTLRSX.EM	GW JTLRSX.EM-LXL5-57S5-1-100-R33	DURIS	Chip EOL	n/a	NO REPLACEMENT
Q65113A0038	OS-PDN-2021-100	GW JTLRSX.EM	GW JTLRSX.EM-LVL3-40S5-1-100-R33	DURIS	Chip EOL	n/a	NO REPLACEMENT
Q65113A0039	OS-PDN-2021-100	GW JTLRSX.EM	GW JTLRSX.EM-LXL5-65S5-1-100-R33	DURIS	Chip EOL	n/a	NO REPLACEMENT