

PowerMod HP connectors, developed by Anderson Power Products, are the innovative New Generation of High Power Interconnections for the Electronics Industry.

The PowerMod HP connectors embody the highest quality in the industry and meet all applicable industry standards.

# PowerMod® HP

## Single Pole Bus Bar - Series A

### Features

- **Low connector mating forces**  
*Connectors are easily mated and un-mated*
- **Silver plated, high conductivity contacts**  
*Offers greater longevity for high power, elevated temperature applications*
- **Ease of assembly**  
*Intuitive design allows for simplicity of assembly*



### SPECIFICATIONS

Electrical		Mechanical	
Current Rating (Amperes)		Mating Force	7 lbs. (31.14N) avg
UL	220	Latch Retention Force	50 lbs. (222N) min
CSA (30°C Rise)	130	Contact Retention Force	100 lbs. (445N) min
UL / CSA Voltage Rating (AC/DC)	600	Mating	
Bus Bar	0.12 (3.0) min	a. No Load (mating cycles)	500
	0.25 (6.4) max	b. Under Load (Hot Plug 250 mating cycles @ 120V)	80A
Dielectric Withstanding Voltage (AC)	2,200	<b>Materials</b>	
Operating Temperature (°C)	-40° to 130°	Housing	PBT UL94 V-0
(°F)	-40° to 266°	Contacts	Copper alloy silver plate
Ambient Temperature (°C)	-40° to 85°	Hardware	Steel zinc chromate
(°F)	-40° to 185°		



### ORDERING INFORMATION

#### PowerMod HP Part Number Plan - Single Pole Bus Bar

Series	Series	Gender	Model	Wire Size
PMHP	A	M	04	P06
A *				
M - Male				
04 - Bus Bar Mount				
P06 - Pin Bus Bar				

# Single Pole Bus Bar - Series A

## ORDERING INFORMATION

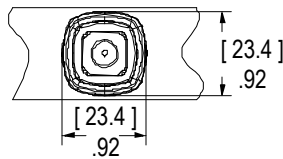
### Tooling For Mating Connectors

Pneumatic Production Tool				
Wire Size	Part Number	Die P/N	Locator P/N	Number of Crimps
#2 AWG 35mm <sup>2</sup>	1387G2	1303G13	1304G19	2
25mm <sup>2</sup>	1387G2	1303G13	1304G19	2
#4 AWG 16mm <sup>2</sup>	1387G2	1303G14	1304G19	2
#6 AWG	1387G2	1303G14	1304G19	2

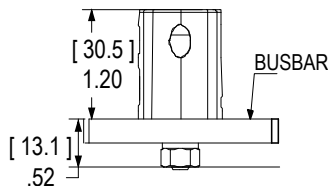
Hand Tool				
Wire Size	Hydraulic	Battery	Die P/N	Number of Crimps
#2 AWG 35mm <sup>2</sup>	1387G3	1370G1	1322G7	2
25mm <sup>2</sup>	1387G3	1370G1	1322G11	2
#4 AWG 16 mm <sup>2</sup>	1387G3	1370G1	1322G8	2
#16 AWG	1387G3	1370G1	1322G9	2

## DIMENSIONS

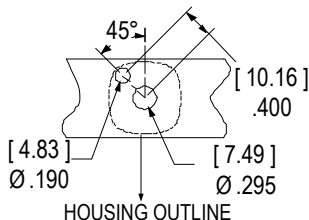
### Front



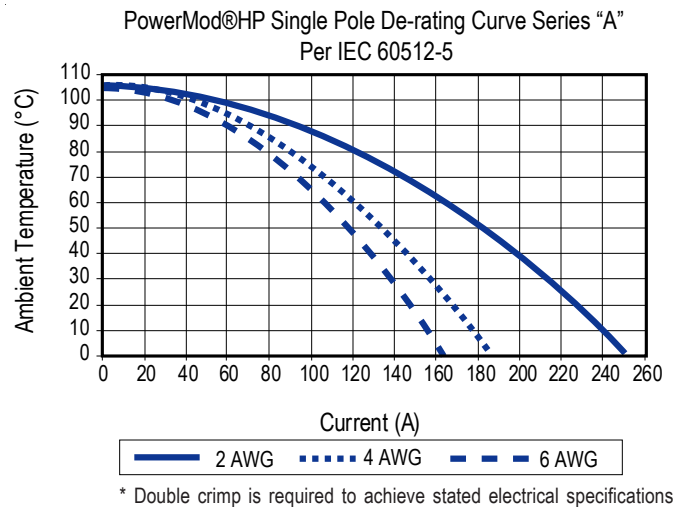
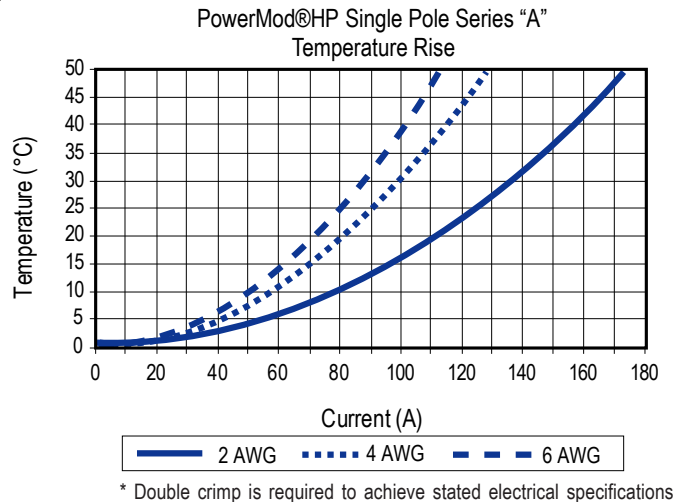
### Side



### Back



## TEMPERATURE CHART



## MATING CONNECTORS

### Single Pole Right Angle Female



### Single Pole Female

