

High Pass Filter

RHP-260+

50Ω 300 to 2200 MHz

Maximum Ratings

| | |
|-----------------------|----------------|
| Operating Temperature | -40°C to 85°C |
| Storage Temperature | -55°C to 100°C |
| RF Power Input | 0.5W at 25°C |

Permanent damage may occur if any of these limits are exceeded.

Pin Connections

| | |
|--------|------------------|
| INPUT | 2 |
| OUTPUT | 6 |
| GROUND | 1, 3, 4, 5, 7, 8 |

Features

- low insertion loss, 0.5dB typ. @ passband
- high rejection
- shielded case
- aqueous washable

Applications

- transmitters / receivers
- sub-harmonic rejection
- military communications



Generic photo used for illustration purposes only
CASE STYLE: GP731

+RoHS Compliant

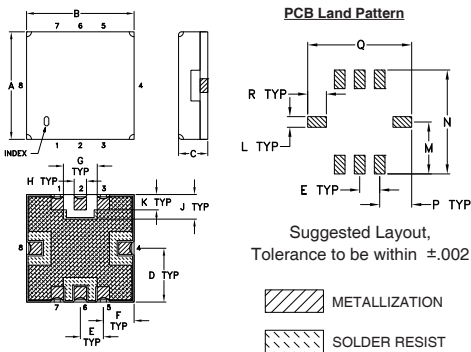
The +Suffix identifies RoHS Compliance. See our web site for RoHS Compliance methodologies and qualifications

| | |
|--|----------------------|
| Available Tape and Reel at no extra cost | |
| Reel Size | Devices/Reel |
| 7" | 10, 20, 50, 100, 200 |
| 13" | 500, 1000 |

Band Pass Filter Electrical Specifications (T_{AMB} = 25°C)

| STOPBAND (MHz) | | f _{co} , MHz Nom. | PASSBAND (MHz) | VSWR (:1) | |
|----------------|---------------|----------------------------|----------------|---------------|---------------|
| (Loss > 40dB) | (Loss > 20dB) | (Loss 3dB) | (Loss < 1.2dB) | Stopband Typ. | Passband Typ. |
| DC - 145 | DC - 190 | 260 | 300 - 2200 | 20 | 1.3 |

Outline Drawing

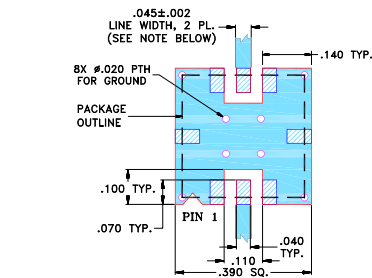


Outline Dimensions (inch/mm)

| | | | | | | | | |
|------|------|------|------|------|------|------|-------|------|
| A | B | C | D | E | F | G | H | J |
| .350 | .350 | .100 | .175 | .075 | .100 | .110 | .040 | .080 |
| 8.89 | 8.89 | 2.54 | 4.45 | 1.91 | 2.54 | 2.79 | 1.02 | 2.03 |
| K | L | M | N | P | Q | R | wt. | |
| .050 | .040 | .195 | .390 | .120 | .390 | .070 | grams | |
| 1.27 | 1.02 | 4.95 | 9.91 | 3.05 | 9.91 | 1.78 | 0.25 | |

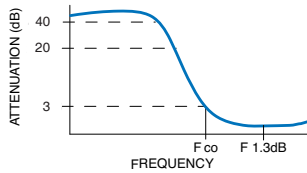
Note: Please refer to case style drawing for details

Demo Board MCL P/N: TB-332 Suggested PCB Layout (PL-176)

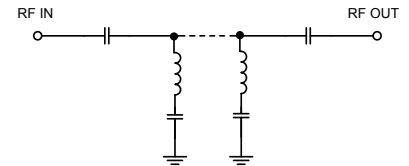


- NOTES:**
1. TRACE WIDTH IS SHOWN FOR FR4 WITH DIELECTRIC THICKNESS .025" ± .002"; COPPER: 1/2 OZ. EACH SIDE. FOR OTHER MATERIALS TRACE WIDTH MAY NEED TO BE MODIFIED.
 2. BOTTOM SIDE OF THE PCB IS CONTINUOUS GROUND PLANE.
- DENOTES PCB COPPER LAYOUT WITH SMOBC (SOLDER MASK OVER BARE COPPER)
 - DENOTES COPPER LAND PATTERN FREE OF SOLDER MASK

Typical Frequency Response



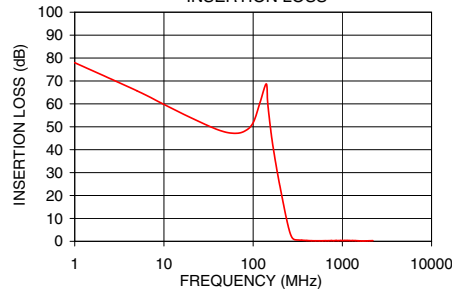
Functional Schematic



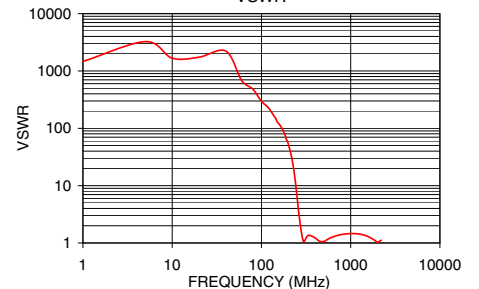
Typical Performance Data at 25°C

| Frequency (MHz) | Insertion Loss (dB) | VSWR (:1) |
|-----------------|---------------------|-----------|
| 1.0 | 77.96 | 1465.81 |
| 20.0 | 53.97 | 1737.18 |
| 60.0 | 47.15 | 683.17 |
| 145.0 | 61.41 | 149.09 |
| 160.0 | 46.44 | 115.91 |
| 190.0 | 28.47 | 64.85 |
| 220.0 | 15.70 | 28.97 |
| 240.0 | 8.70 | 11.67 |
| 250.0 | 5.78 | 6.64 |
| 260.0 | 3.48 | 3.81 |
| 270.0 | 1.95 | 2.32 |
| 280.0 | 1.13 | 1.57 |
| 300.0 | 0.62 | 1.05 |
| 500.0 | 0.23 | 1.06 |
| 1000.0 | 0.34 | 1.46 |
| 1500.0 | 0.25 | 1.33 |
| 2000.0 | 0.23 | 1.03 |
| 2200.0 | 0.31 | 1.12 |

RHP-260+
INSERTION LOSS



RHP-260+
VSWR



Notes

- A. Performance and quality attributes and conditions not expressly stated in this specification document are intended to be excluded and do not form a part of this specification document.
- B. Electrical specifications and performance data contained in this specification document are based on Mini-Circuit's applicable established test performance criteria and measurement instructions.
- C. The parts covered by this specification document are subject to Mini-Circuit's standard limited warranty and terms and conditions (collectively, "Standard Terms"); Purchasers of this part are entitled to the rights and benefits contained therein. For a full statement of the Standard Terms and the exclusive rights and remedies thereunder, please visit Mini-Circuit's website at www.minicircuits.com/MCLStore/terms.jsp

