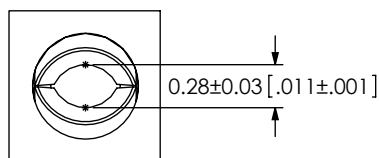
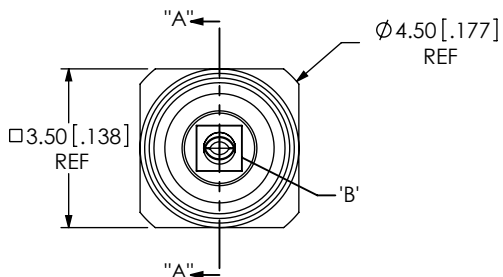


DO NOT SCALE FROM THIS PRINT

DESIGNED & DIMENSIONED IN MILLIMETERS [INCHES]

MMCX-J-P-X-ST-TH1



DETAIL 'B' SCALE 20:1

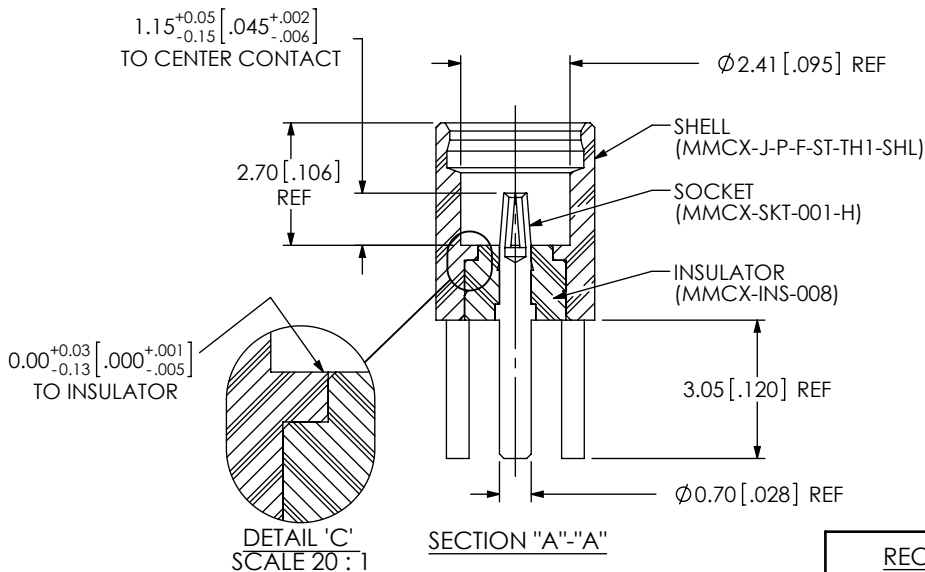
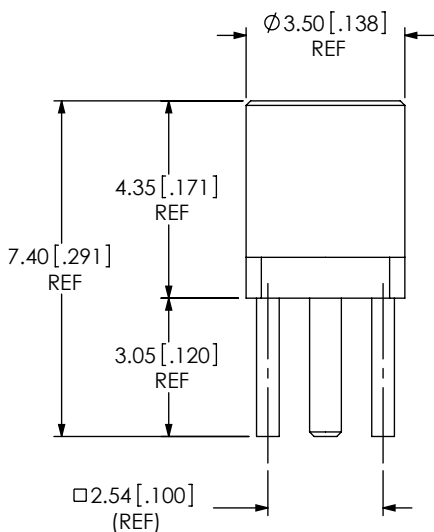
GENDER
-J: JACK

TYPE
-P: PCB

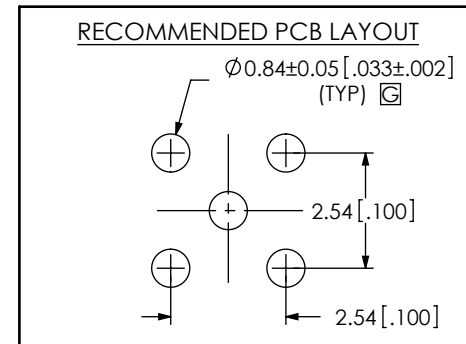
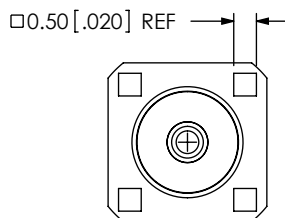
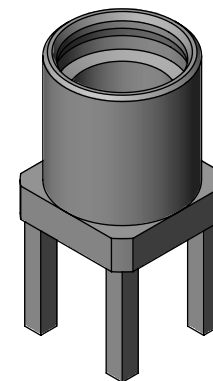
PLATING SPECIFICATION
-H: HEAVY GOLD IN CONTACT AREA, FLASH GOLD ON BALANCE

TERMINATION
-TH1: THROUGH HOLE

ORIENTATION
-ST: STRAIGHT



DETAIL 'C' SCALE 20:1



NOTES:

1. REPRESENTS A CRITICAL DIMENSION.
2. PUSHOUT FORCE FOR INSULATOR: 22.24 N [5 LB] MIN.
3. PUSHOUT FORCE FOR CENTER CONTACT: 11.12 N [2.5 LB] MIN.
4. SEE CO-HD-WI-3040M RF PACKAGING FOR PACKAGING INSTRUCTIONS, USE SAMTEC TRAY TY-SMA001-1 AND TY-SMA001-2. QUANTITIES LESS THAN A FULL TRAY WILL NOT BE PACKAGED IN TRAYS.
5. RoHS COMPLIANT.

UNLESS OTHERWISE SPECIFIED, DIMENSIONS ARE IN MILLIMETERS [INCHES]. TOLERANCES ARE:

DECIMALS ANGLES
.X: ±0.3 [0.01] 2°
.XX: ±0.13 [0.005]
.XXX: ±0.051 [0.0020]

PROPRIETARY NOTE

THIS DOCUMENT CONTAINS INFORMATION CONFIDENTIAL AND PROPRIETARY TO SAMTEC, INC. AND SHALL NOT BE REPRODUCED OR TRANSFERRED TO OTHER DOCUMENTS OR DISCLOSED TO OTHERS OR USED FOR ANY PURPOSE OTHER THAN THAT WHICH IT WAS OBTAINED WITHOUT THE EXPRESSED WRITTEN CONSENT OF SAMTEC, INC.

MATERIAL: DO NOT SCALE DRAWING SHEET SCALE: 6:1

SHELL : BRASS C3604B
INSULATOR : PTFE (WHITE)
SOCKET : BeCu C17300

DESCRIPTION:
MMCX STRAIGHT, THROUGH HOLE JACK- 50 OHM

DWG. NO. **MMCX-J-P-X-ST-TH1**

BY: R MUSSER 11/30/2007 SHEET 1 OF 1