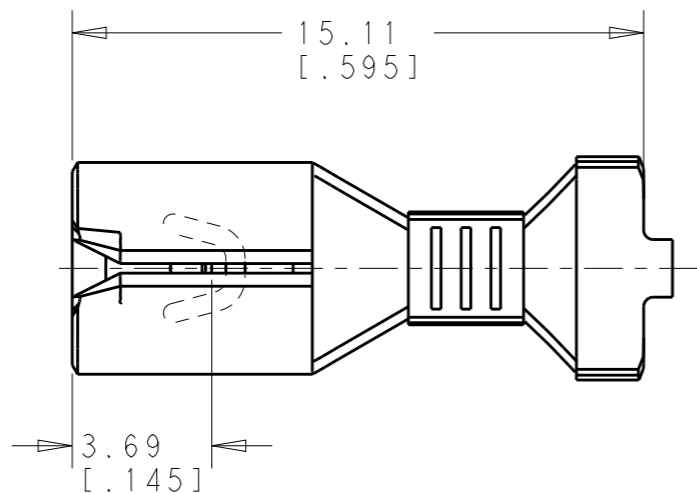
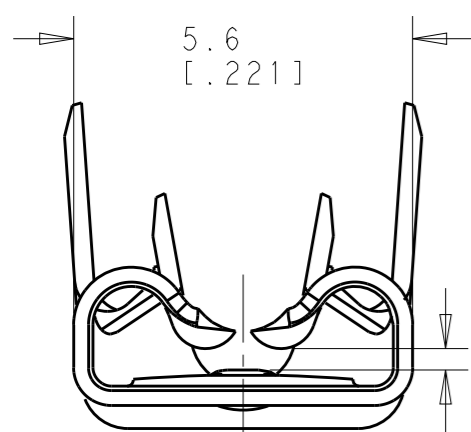


THIS DRAWING IS UNPUBLISHED. RELEASED FOR PUBLICATION 20  
 © COPYRIGHT 20 BY - ALL RIGHTS RESERVED.

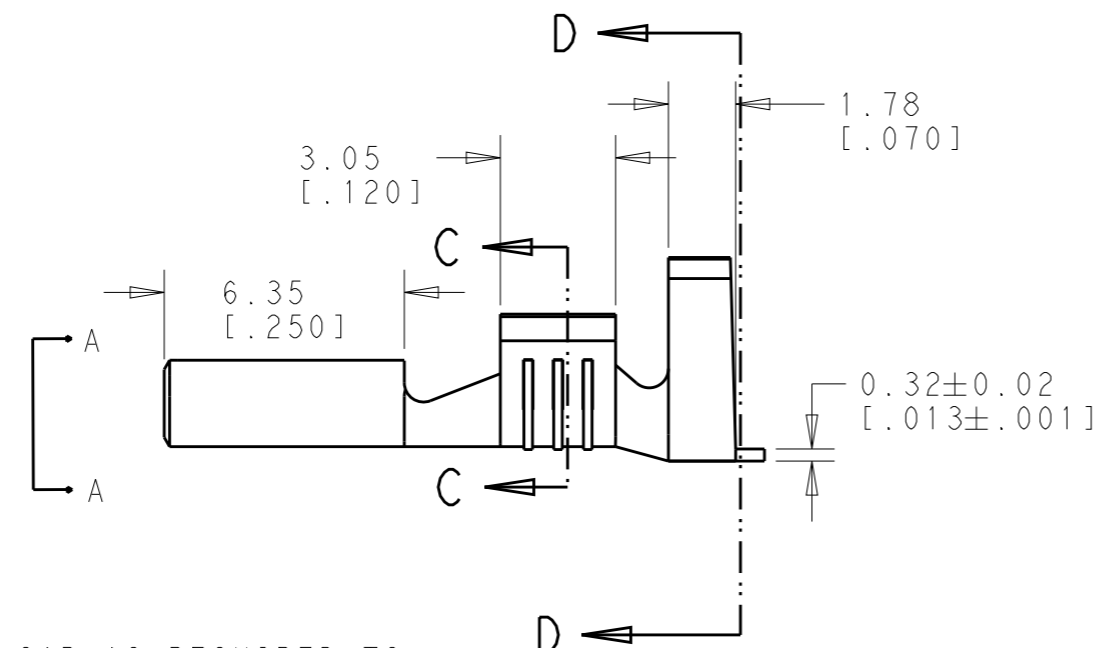
REVISIONS					
P	LTR	DESCRIPTION	DATE	DWN	APVD
	A	RELEASED PER ECO-18-002592	20FEB2018	RS	DH
	B	REVISED PER ECR-19-012503	06SEP2019	PC	DH
	B1	REVISED PER ECR-20-009164	22JULY2020	MK	DH



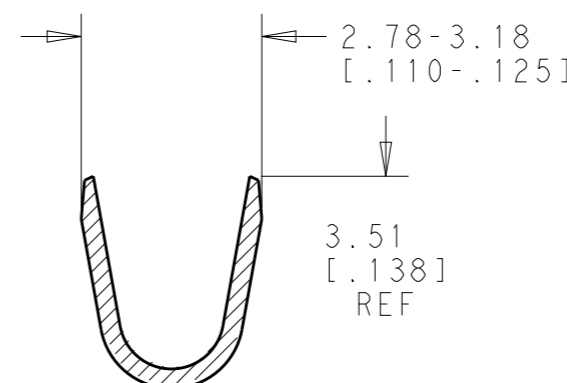
- CONTINUOUS STRIP ON REELS.
- WIRE SIZE #18-#16 OR TWO #18'S AWG
- INSULATION RANGE 2.67-5.33 [.105-.210] DIA OR TWO AT 2.67 MAX [.105] DIA
- MATING TAB THK 0.84-0.76 [.033-.030]
- AWG 18-16 & (2) AWG 18 UL APPROVAL
- PAPER INTERLEAVING ON FINAL PACKAGING. QTY/REEL = 15K/REEL.



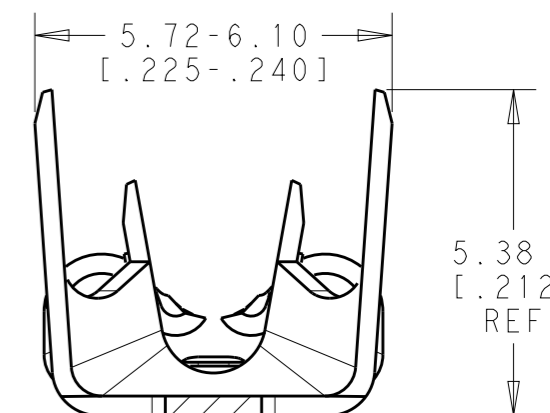
VIEW A-A  
SCALE 8:1



GAP AS REQUIRED TO MEET FORCE SPECIFICATIONS AND 0.71 [.028] MAX


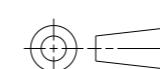


SECTION C-C  
SCALE 8:1



SECTION D-D  
SCALE 8:1

TIN	BRASS	2238199-3
FINISH	MATERIAL	PART NO.

THIS DRAWING IS A CONTROLLED DOCUMENT.		DWN 05JAN2018 BASVESH WARAD	 TE Connectivity	
DIMENSIONS: mm [INCHES]		CHK 05JAN2018 HUMPHREY, DAVID		
		APVD 05JAN2018 HUMPHREY, DAVID	PRODUCT SPEC -	SIZE A3
TOLERANCES UNLESS OTHERWISE SPECIFIED: 0 PLC ±- 1 PLC ±- 2 PLC ±0.25 [.010] 3 PLC ±- 4 PLC ±- ANGLES ±5°		APPLICATION SPEC -	WEIGHT -	CAGE CODE 00779
MATERIAL SEE TABLE	FINISH SEE TABLE	DRAWING NO 2238199		RESTRICTED TO -
CUSTOMER DRAWING			SCALE 5:1	SHEET 1 OF 1
				REV B1