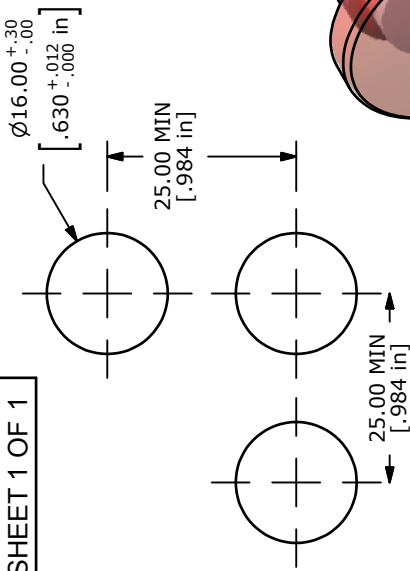
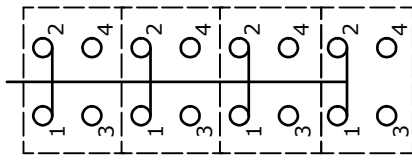


PARTS LIST

ITEM	QTY	PART NUMBER	DESCRIPTION
1	1	F040030	D16 EER 1 4
2	1	F051212	50-012-12 (TRANSPARENT RED)



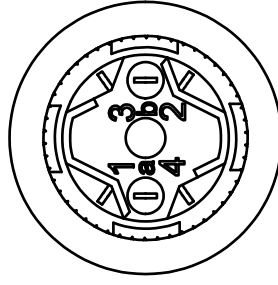
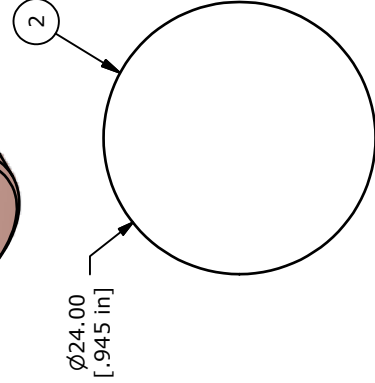
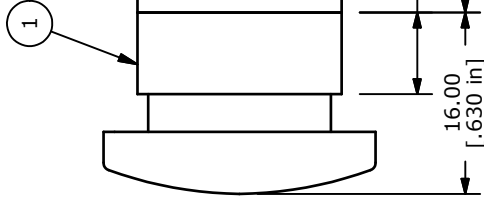
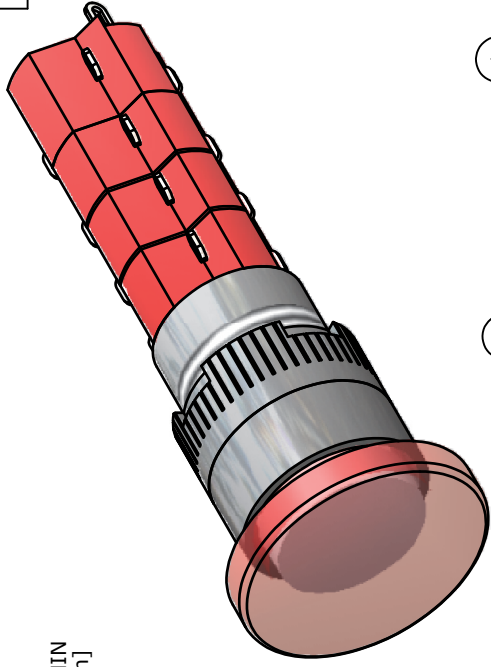
PANEL MOUNTING



a ○ ○ ○ ○ b (+)
4PDT

CONTACT CONFIGURATION

- NOTE:
- ALL DIMENSIONS IN MM [INCH]
 - GENERAL TOLERANCE: X.X = ±0.4
X.XX = ±0.25
 - TERMINAL NUMBERS FOR REF ONLY
 - MECHANICAL LIFE: 2,000,000 OPERATIONS
 - INSULATION RESISTANCE: 1,000 MILLI-OHM MIN.
 - OPERATING TEMP.: -25°C to 55°C
 - ▲ DENOTES CRITICAL PARAMETER.
 - CONTACT RATING: 5A @ 250VAC-UL VDE
8A @ 125VAC-UL, CSA
6A @ 24VDC - UL, CSA
 - CONTACT RESISTANCE: 100 milli-OHM MAX.



E-SWITCH®

TITLE D16EER40RED

REV	PCR NO	DESCRIPTION	DATE	BY
A	19556	NEW RELEASE	1/5/11	BGL

THE INFORMATION CONTAINED IN THIS DOCUMENT IS PROPRIETARY TO E-SWITCH AND IS NOT TO BE COPIED OR TRANSFERRED

SCALE	DATE	DR	DWG	REV
1.5:1	1/5/2011	BGL	XF0834P	A