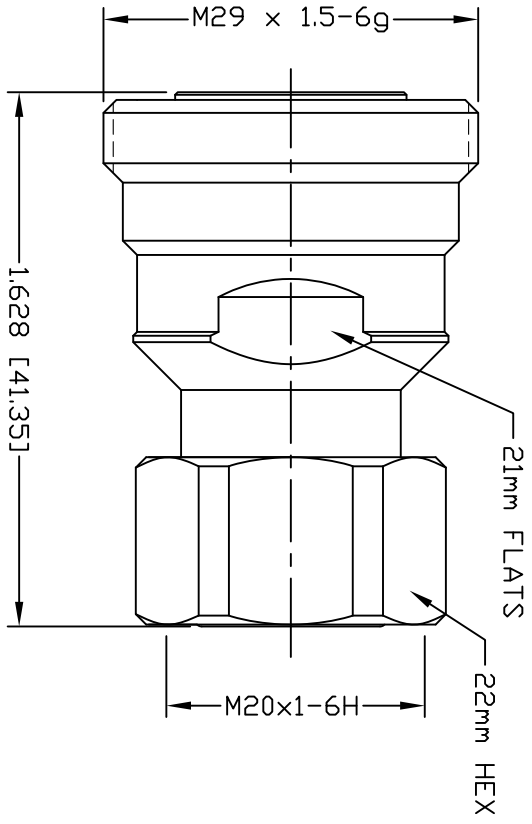


PART NO.		RFD-1688-4		
REV	DESCRIPTION	DWN	DATE	APPROVED
A	UPDATED ELECTRICAL SPECS	CZS	06/16/20	JDMc



SPECIFICATIONS:

IMPEDANCE: 50 Ohms
 FREQUENCY RANGE: 0-6 GHz
 3rd ORDER IM: ≤-160dBc (RELATIVE TO CARRIER)
 3rd ORDER IM TEST METHOD: 2x43dBm CARRIERS
 VSWR: ≤1.15:1
 DIELECTRIC WITHSTANDING VOLTAGE: 2000V/AC
 INSULATION RESISTANCE: 1000MΩ
 DC TEST VOLTAGE: 2500V
 INNER CONTACT RESISTANCE: 1mΩ MAX
 OUTER CONTACT RESISTANCE: 1mΩ MAX
 COUPLING NUT PROOF TORQUE (7/16 DIN): 35N-m / 25 ft lbs
 COUPLING NUT PROOF TORQUE 4.3/10: 7N-m / 5 ft lbs
 AVERAGE POWER, INNER CONDUCTOR TEMPERATURE: 100°C / 212°F
 OPERATING TEMPERATURE: -40° to +155°
 INTERFACE DURABILITY: 100 CYCLES
 REGULATORY COMPLIANCE/CERTIFICATIONS: ROHS/IP68

NOTE: BOTH CONNECTORS WILL HAVE PROTECTIVE CAPS ON

#	DESCRIPTION	QTY	MATERIAL	FINISH
6	RETAINING RING	1	BRASS	WHITE BRONZE
5	COUPLING NUT	1	BRASS	WHITE BRONZE
4	O-RING	1	S.I. RUBBER	RED
3	INSULATOR	1	PTFE	WHITE
2	CONTACT	1	BeCu	SILVER
1	BODY	1	BRASS	WHITE BRONZE

CUSTOMER OUTLINE DRAWING
 ALL DIMENSIONS ARE REFERENCE ONLY
 UNLESS OTHERWISE SPECIFIED: DIMENSIONS ARE IN INCHES AND [MILLIMETERS]

ROHS COMPLIANT
 PROPRIETARY AND CONFIDENTIAL
 THIS DRAWING CONTAINS INFORMATION PROPRIETARY TO RF INDUSTRIES. ANY UNAUTHORIZED USE OF THIS DRAWING IS EXPRESSLY PROHIBITED WITHOUT WRITTEN PERMISSION FROM RF INDUSTRIES. ANY VIOLATION IS PUNISHABLE UNDER U.S. COPYRIGHT LAWS.

RF Connectors
 DIVISION OF RF INDUSTRIES, LTD.
 7610 MIRAMAR RD. SAN DIEGO, CA 92126
 (858) 549-6340 (858) 549-6345 FAX

7/16 DIN FEMALE TO 4.3/10 MALE ADAPTER

SCALE: NTS ENGINEERING ID: 000000 SHEET 1 OF 1

ORD DRAWN	C. ZUÑIGA	06/22/15
CHECKED		
DRAWN	C. ZUÑIGA	06/16/20

SIZE	CABLE GROUP	DWG NO.	REVISION
A	N/A	RFD-1688-4	A