

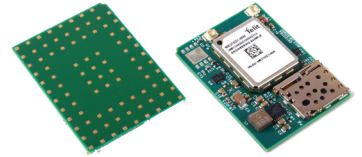
# JANUS REMOTE COMMUNICATIONS

P  
R  
O  
D  
U  
C  
T  
B  
R  
I  
E  
F

## LTE310SMT v1.00 CAT-M1/NB2 Global CellBridge™ 4G Cellular Modem

### Description

Janus CellBridge™ SMT is the first end device certified surface mount cellular modem available for use in all IoT applications globally. The 89 Pad LGA Package allows users to assemble modems onto application PCBs during primary pick & place processing via automated assembly equipment.



Standard assembly procedures coupled with CellBridge LGA architecture ensures the best modem to PCB connectivity possible, virtually eliminating problematic mechanical connectivity issues in the field.

The CellBridge™ SMT offers global frequency bands, supporting dual mode Cat M1/NB2 (NB-IoT) with 2G fallback. It is highly recommended for new designs and is also ideal as a migration path for existing 2G and 3G devices. Both current and updated designs benefit from a significant extension in product life with 4G LTE Cat M1/NB2 technology.

The CellBridge™ SMT Modem also includes a state-of-art GNSS receiver that can simultaneously search and track satellite signals from multiple satellite constellations.

### LTE310SMT CAT-M1/NB2 Specifications

- Approvals
  - Regulatory: FCC, ISED, PTCRB, RED
  - North American Carriers: AT&T and Verizon
- Data Rate:
  - LTE Cat M1 (Rel. 14)
    - Uplink up to 1 Mbps
    - Downlink up to 588 Kbps
  - LTE Cat NB2 (Rel. 14)
    - Uplink up to 160 Kbps
    - Downlink up to 120 Kbps
  - EGPRS (2G Fallback variants)
    - Uplink up to 210 Kbps
    - Downlink up to 264 Kbps
- V1.00 Frequency bands
  - LTE 4G Bands: B1, B2, B3, B4, B5, B8, B12, B13, B18, B19, B20, B25, B26, B27, B28, B66, B71, B85
  - GSM 2G Bands: B2, B3, B5, B8
- TCP/IP stack access via AT commands
- SMS (MO / MT)
- Output power: Class 3 (0.2W, 23 dBm) @ LTE
- Dimensions: 1.02" x 1.38" x 0.15" (26mm x 35mm x 3.81mm)
- Operational temperature range: -40°C to 85°C
- Internal Switching Regulator:
  - Input Voltage Range: 2.5 to 5.25Vdc
  - Supply disable via terminal input pin
- UART, USB and SPI ports
- Six GPIO, one ADC and one DAC
- SIM Card
  - Nano (4FF size) Locking SIM card socket
- Antenna:
  - Cellular and GNSS antennas
  - Two U.FL miniature RF connectors
- GNSS
  - GPS, GLONASS, BeiDou, Galileo, and QZSS
  - NMEA data

### Features

- 4FF (nano) SIM Holder
- SIM IC (optional)
- 89 Pad LGA Package
- Ships in Tape and Reel (see page 2)
- 1.02" x 1.38" (26mm x 35mm)
- Lowest Modem Total Cost of Ownership (TCO)
- End Product Certification
- Excellent Shock and Vibration (vs. connector units)
- Mobile IoT 3GPP Rel14-LTE CAT-M1, NB1, NB2
- Telit OneEdge Ready (see page 2)
- Qualcomm 9205 Chipset

### Applications

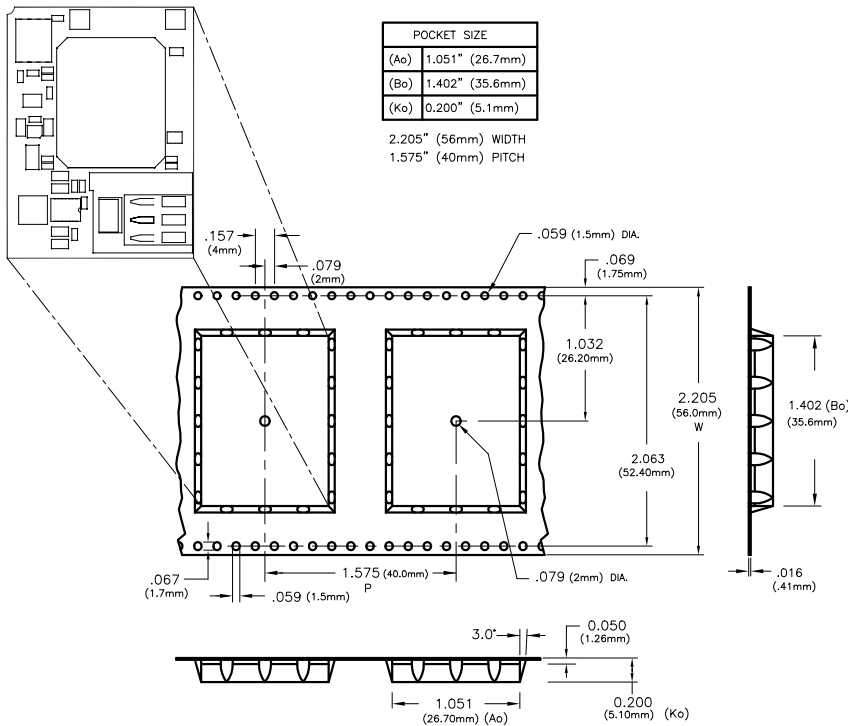
- Fleet Management
- Asset Tracking
- Security Systems
- Telehealth
- Telematics & Telecontrol
- Remote Sensors
- Remote Meter Reading
- Vending Machines

2359 Diehl Road  
Aurora, IL 60502  
**630.499.2121**  
info@janus-rc.com  
www.janus-rc.com

Bulletin **JA24-PB\_LTE310SMT**  
Revision **04**  
Date **14 March 2023**

**CellBridge™**  
Global Cellular Modem Solutions

## Tape & Reel Information Dimensions



## Telit OneEdge® Availability

Telit offers ME910G1 with OneEdge, a software suite integrated with deployment and management tools to address the complexity expected with the exponential growth in the number of IoT devices. The following components include:

- **Lightweight M2M protocol** enables comprehensive device management, FOTA updates and application enablement of low power devices with the goal of more robust and secure connections.
- **Telit simWISE™**, a module-embedded SIM technology, enables reduced footprint, streamlined manufacturing and logistics, secure communications for connected devices.
- **Telit IoT AppZone** can run code and applications directly inside the Telit module.
- **Telit's Connection Manager** automates operations for connection to cellular networks.
- **Location services** provide the position of devices even in the absence of a GNSS connection.

**Telit ONEEDGE®**



Making machines talk.

## Ordering Information

LTE310SMT	V100	T	X	H	4	L	X
<b>Cellular Terminal</b>	<b>Carrier Certified &amp; Version</b>	<b>Modem Provider</b>	<b>Firmware</b>	<b>SIM Holder</b>	<b>SIM Size</b>	<b>Power</b>	<b>SIM/Plan</b>
LTE LTE910SMT	LTE v1.00 CAT-M1/NB2	T = Telit S = Sierra Wireless N = Nordic	* Call Sales Rep for most recent firmware version.	H = Mech Holder E = Embedded IC B = Both	H or B = 2, 3, 4 size If SIM Holder is "E" N = No SIM Card	S = Standard Power L = Low Power	

Example: Part Number – LTE310SMTV100TxH4Lx = LTE Cellular Socket Modem; Telit Modem; Current Firmware; Mech SIM Holder; SIM Nano (4FF) Size Card; Low Power, SIM Plan.

Contact Sales for Additional Special Order Options: Bill Borton: [bborton@janus-rc.com](mailto:bborton@janus-rc.com) | 630-499-2121

## Revision History

Revision	Revision Date	Note
00	07/15/20	Initial Product Brief
01	06/02/21	Added Tape & Reel Dimensions
02	07/13/21	Updated Dimensions
03	12/23/21	Updated Regulatory Approvals
04	03/14/23	Updated Contact Information

**JANUS** REMOTE  
COMMUNICATIONS

Division of The Connor-Winfield Corporation

2111 Comprehensive Dr. • Aurora, IL 60505

630.499.2121 • [info@janus-rc.com](mailto:info@janus-rc.com)

[www.janus-rc.com](http://www.janus-rc.com)

**CellBridge™**  
Global Cellular Modem Solutions

© Copyright 2023 Janus Remote Communications | Specifications subject to change without notice.

All Rights Reserved | See website for latest revision. | Not intended for life support applications.