

MATERIALS AND FINISHES:

BODY, OUTER CONTACT, CRIMP TUBE: BRASS  
PLATED: GOLD

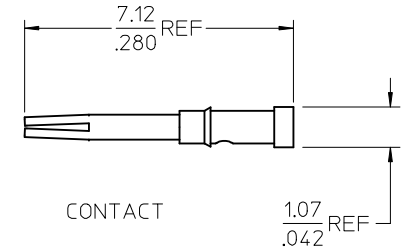
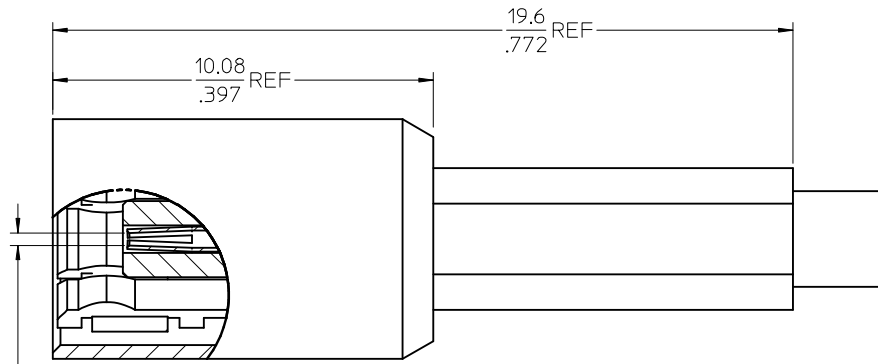
CENTER CONTACT: BERYLLIUM COPPER  
PLATED: GOLD

RETAINING RING: BERYLLIUM COPPER  
PLATED: NICKEL

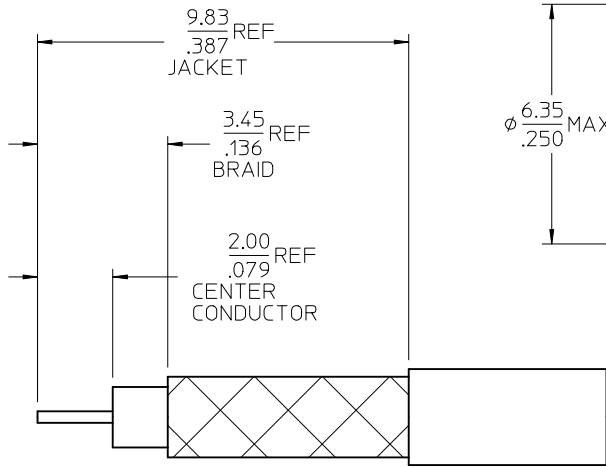
INSULATOR: TEFLON

CRIMP DIE: 3.25(.128) HEX

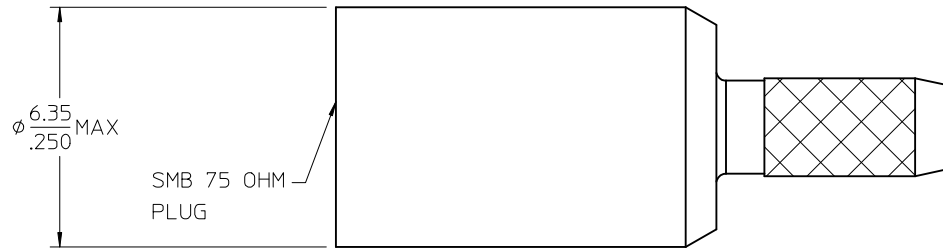
CONTACT SHALL MATE WITH  
0.36/0.41  
Ø .014/.016  
MALE CONTACT



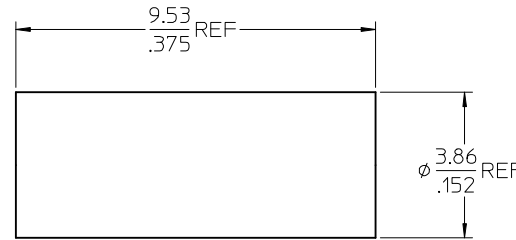
CONTACT



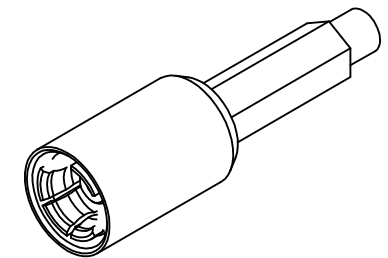
CABLE STRIP DIMENSIONS



SMB 75 OHM  
PLUG



CRIMP TUBE



PART # 73404-1600

CHG: NEW FRAME  
DELETE VIEW  
.136 WAS .126  
.387 WAS .362

EC NO: URF2009-0688  
DRWN: WIENER 2009/05/27  
CHKD: SHAH 2009/05/27  
APPR: WIENER 2009/05/27

DESCRIPTION  
REV: B1

QUALITY SYMBOLS  
▽=0  
▽=0

GENERAL TOLERANCES (UNLESS SPECIFIED)

|          | mm     | INCH    |
|----------|--------|---------|
| 4 PLACES | ± .005 | ± .0005 |
| 3 PLACES | ± .005 | ± .0005 |
| 2 PLACES | ± .005 | ± .0005 |
| 1 PLACE  | ± .005 | ± .0005 |

ANGULAR ±1/2°

DRAFT WHERE APPLICABLE  
MUST REMAIN  
WITHIN DIMENSIONS

DIMENSION STYLE  
IN/MM

DRAWN BY SSS  
CHECKED BY TEF  
APPROVED BY GMH

DATE 2004/03/10  
DATE 2004/03/10

MATERIAL NO.  
SIZE C

SCALE INCH

DESIGN UNITS INCH

THIRD ANGLE PROJECTION

TITLE  
SMB PLUG STR RG179  
75 OHM  
SMB-PC EWR-2369

MOLEX MOLEX INCORPORATED

DOCUMENT NO. SD-73404-160

SHEET NO. 1 OF 1

THIS DRAWING CONTAINS INFORMATION THAT IS PROPRIETARY TO MOLEX INCORPORATED AND SHOULD NOT BE USED WITHOUT WRITTEN PERMISSION